

INGERSOLL-RAND®



EP/HP/HXP 30 SE
EP/HP/HXP 40 SE
ML/MM/MH/MU 22 SE
ML/MM/MH/MU 30 SE

PARTS LIST
RECOMMENDED SPARES

RETAIN THIS MANUAL WITH UNIT.
This Technical manual contains IMPORTANT SAFETY
DATA and should be kept with the air compressor at
all times.

More Than Air. Answers.

Online answers: <http://www.air.ingersoll-rand.com>

APDD 750
November 1999

**AIR COMPRESSOR GROUP
BONDED WARRANTY & REGISTERED START UP**

Warranty

The Company warrants that the equipment manufactured by it and delivered hereunder will be free of defects in material and workmanship for a period of twelve months (see extended airend warranty) from the date of placing the Equipment in operation or eighteen months (see extended airend warranty) from the date of shipment from Davidson, NC, whichever shall first occur. The Purchaser shall be obligated to promptly report any failure to conform to this warranty, in writing to the Company in said period, whereupon the Company shall, at its option, correct such nonconformity, by suitable repair to such equipment or, furnish a replacement part F.O.B. point of shipment, provided the Purchaser has stored, installed maintained and operated such Equipment in accordance with good industry practices and has complied with specific recommendations of the Company. Accessories or equipment furnished by the Company, but manufactured by others, shall carry whatever warranty the manufacturers have conveyed to the Company and which can be passed on to the Purchaser. The Company shall not be liable for any repairs, replacements, or adjustments to the Equipment or any costs of labor performed by the Purchaser or others without Company's prior written approval.

The effects of corrosion, erosion and normal wear and tear are specifically excluded. Performance warranties are limited to those specifically stated within the Company's proposal. Unless responsibility for meeting such performance warranties are limited to specified tests, the Company's obligation shall be to correct in the manner and for the period of time provided above.

THE COMPANY MAKES NO OTHER WARRANTY OR REPRESENTATION OF ANY KIND WHATSOEVER, EXPRESSED OR IMPLIED, EXCEPT THAT OF TITLE, AND ALL IMPLIED WARRANTIES OF MERCHANTABILITY AND FITNESS FOR A PARTICULAR PURPOSE, ARE HEREBY DISCLAIMED.

Correction by the Company of nonconformities whether patent or latent, in the manner and for the period of time provided above, shall constitute fulfillment of all liabilities of the Company for such nonconformities whether based on contract, warranty negligence, indemnity, strict liability or otherwise with respect to or arising out of such Equipment.

The purchaser shall not operate Equipment which is considered to be defective, without first notifying the Company in writing of its intention to do so. Any such Equipment will be at Purchaser's sole risk and liability.

Limitation of Liability

The remedies of the Purchaser set forth herein are exclusive, and the total liability of the Company with respect to this contract or the Equipment and services furnished hereunder, in connection with the performance or breach thereof, or from the manufacture, sale, delivery, installation, repair or technical direction covered by or furnished under this contract, whether passed on contract, warranty negligence, indemnity, strict liability or otherwise, shall not exceed the purchase price of the unit of Equipment upon which such liability is based.

The Company and its suppliers shall in no event be liable to the Purchaser, any successors in interest or any beneficiary or assignee of this contract for any consequential, incidental, indirect, special or punitive damages arising out of this contract or any breach thereof, or any defect in, or failure of, or malfunction of the Equipment hereunder, whether based upon loss of use, lost profits or revenue, interest, lost goodwill, work stoppage, impairment of other goods, loss by reason of shutdown or non-operation, increased expenses of operation, cost of purchase of replacement power or claims of Purchaser or customers of Purchaser for service interruption whether or not such loss or damage is based on contract, warranty, negligence, indemnity, strict liability or otherwise.

EXTENDED AIREND WARRANTY

The Ingersoll-Rand Company Rotary Screw Air Compressor that has been filled prior to its original shipment from Ingersoll-Rand Company with ULTRA COOLANT and which has been operated solely on ULTRACOOLANT thereafter shall have its AIREND warranted for twenty four (24) months from the date of placing the COMPRESSOR in operation or thirty (30) months from the date of shipment, whichever occurs first.

Except for the above warranty period, the standard warranty provisions shall apply and the conditions outlined herein are understood to be a supplement to the standard Ingersoll-Rand Company warranty.

TABLE OF CONTENTS

Safety And Warnings	2
Introduction	3
Intellisys/Starter Box/Control Piping (Full Voltage without Modulation)	4,5
Intellisys/Starter Box/Control Piping (Full Voltage with Modulation)	6,7
Intellisys/Starter Box/Control Piping (Star-Delta without Modulation)	8,9
Intellisys/Starter Box/Control Piping (Star-Delta with Modulation)	10,11
Starter Assembly C60 and C85 Full Voltage	12,13
Starter Assembly B110 and B180 Full Voltage ..	14,15
Starter Assembly C30/C23, C37/C30 and C43/C43 Star-Delta	16,17
Starter Assembly C60/C43, C72/C60 and C85/C72 Star-Delta	18,19
Major Components	20-21
Airend Piping	24,25
Inlet Valve/Air Filter - Full Voltage (Option)	26,27
Inlet Valve/Air Filter - Star-Delta (Option)	28,29
Heavy Duty Filter Assembly (Option)	30,31
Separator Tank Assembly	32,33
Cooler Assembly (Options)	34,35
Enclosure Assembly - Standard	36,37
Enclosure Assembly - Outdoor Mod.	38,39
Table - O-Rings	40
Recommended Spare Parts List	41,42

ROTARY SCREW AIR COMPRESSOR

This unit was purchased from

Ingersoll-Rand Company reserves the right to make changes or add improvements without notice and without incurring any obligation to make such changes or add such improvements to products sold previously.

No. of units on order: _____

Customer Order No.: _____

Ingersoll-Rand Co. Order No.: _____

For ready reference:

Record the serial number and model number of your unit here.

Serial Number: _____

Model Number: _____

0.0 SAFETY AND WARNINGS

0.1 SAFETY INSTRUCTIONS

Before you install this air compressor you should take the time to carefully read all the instructions contained in the operators manual APDD 556. Operator manuals may be obtained from your local Ingersoll-Rand Distributor or Air Center.

Electricity and compressed air have the potential to cause severe personal injury or property damage.

Before installing, wiring, starting, operating or making any adjustments, identify the components of the air compressor using this manual as a guide.

The operator should use common sense and good working practices while operating and maintaining this unit. Follow all codes, pipe adequately, understand the starting and stopping sequence. Check the safety devices by following the procedure contained in this manual.

Maintenance should be done by qualified personnel, adequately equipped with proper tools. Follow the maintenance schedules as outlined in the operators manual to ensure problem free operation after start up.

Safety instructions in the operators manual are bold-faced for emphasis. The signal words DANGER, WARNING and CAUTION are used to indicate hazard seriousness levels as follows:



Danger is used to indicate the presence of a hazard which *will cause severe* personal injury, death, or substantial property damage if the warning is ignored.



Warning is used to indicate the presence of a hazard which *can cause severe* personal injury, death, or substantial property damage if the warning is ignored.



Caution is used to indicate the presence of a hazard which *will or can cause minor* personal injury or property damage if the warning is ignored.

NOTICE

Notice is used to notify people of installation, operation, or maintenance information which is important but not hazard-related.

0.2 SAFETY PRECAUTIONS

SAFETY PRECAUTIONS

BEFORE PROCEEDING, READ CAREFULLY BEFORE INSTALLING THE COMPRESSOR OR PERFORMING ANY MAINTENANCE

WARNING

COMPRESSED AIR AND ELECTRICITY ARE DANGEROUS.

BEFORE DOING ANY WORK ON THIS UNIT, BE SURE THE ELECTRICAL SUPPLY HAS BEEN CUT OFF-LOCKED & TAGGED AND THE ENTIRE COMPRESSOR SYSTEM HAS BEEN VENTED OF ALL PRESSURE.

1. Do not remove the covers, loosen or remove any fittings, connections or devices when this unit is in operation. Hot liquid and air under pressure that are contained within this unit can cause severe injury or death.

2. The compressor has high and dangerous voltage in the motor starter and control box. All installations must be in accordance with recognized electrical codes. Before working on the electrical system, be sure to remove voltage from the system by use of a manual-disconnect-switch. A circuit breaker or fuse safety switch must be provided in the electrical supply line leading to the compressor.

Those responsible for installation of this equipment must provide suitable grounds, maintenance clearance and lightning arrestors for all electrical components as stipulated in O.S.H.A. 1910.308 through 1910.329.

3. Do not operate the compressor at higher discharge pressure than those specified on the Compressor Nameplate or motor overload will occur. This condition will result in compressor motor shutdown.

4. Use only safety solvent for cleaning the compressor and auxiliary equipment.

5. Install a manual shut off valve (isolation type) in the discharge line. When a safety valve is installed between the isolation valve and the compressor, it must have sufficient capacity to relieve the full capacity of the compressor(s).

6. Whenever pressure is released through the pressure relief valve, it is due to excessive pressure in the system. The cause for the excessive pressure should be investigated immediately.

7. Before doing any mechanical work on the compressor:

a.) Shut the unit down.

b.) Electrically isolate the compressor by use of the manual disconnect switch in the power line to the unit. Lock and tag the switch so that it cannot be operated.

c.) Vent pressure from the compressor and isolate the unit from any other source of air.

8. There can be adverse effects if compressor lubricants are allowed to enter plant air systems.

Air line separators, properly selected and installed, will minimize any liquid carry-over.

The use of plastic bowls on line filters without metal guards can be hazardous. From a safety standpoint, metal bowls should be used on any pressurized system. Review of your plant air line system is recommended.

9. When a receiver is installed, it is recommended that occupational safety and health standards as covered in the Federal Register, Volume 36, number 105, part 11, paragraph 1910.169 be adhered to in the installation and maintenance of this receiver.

10. Before starting the compressor, its maintenance instructions should be thoroughly read and understood.

11. After maintenance functions are completed, covers and guards must be replaced.

PARTS LIST

INTRODUCTION

GENERAL

This manual, which contains an illustrated parts breakdown, has been prepared as an aid in identifying and ordering parts in the SE compressor. All of the compressor parts listed in the parts breakdown, are manufactured with the same precision as the original equipment.

Ingersoll-Rand Company service facilities and parts are available worldwide. There are Ingersoll-Rand Company Branch Offices and authorized distributors located in the principle cities of the United States. In Canada, our customers are serviced by the Canadian Ingersoll-Rand Company, Limited. There are also Ingersoll-Rand Company subsidiaries and authorized distributors located in the principle cities throughout the world.

DESCRIPTION

The illustrated parts breakdown illustrates the various assemblies, sub-assemblies and detailed parts which make up this particular SE compressor. A series of illustrations show each part clearly and in it's

correct location relative to the other parts in the illustration. Each part on an illustration is referenced with a number. The number, description and quantity needed per assembly is listed in numerical order on the following pages.

OPTIONAL EQUIPMENT

Several optional accessories items are available for convenience or special application. These accessories have been selected as being particularly suitable for use on the SE compressor.

For complete details on Optional Equipment, contact your Sales Representative.

HOWTO USE THIS PARTS MANUAL

1. Turn to the Parts Section to locate the desired illustrations.
2. Locate the part on the illustration by visual identification and the reference number.
3. Find the referenced number on the Tabulated page, along with the Part Number and Description.

SERIAL NUMBER BREAK

When a part is changed and it doesn't supersede the previous part this change must be docu-

mented by a serial number break. By using the last (6) digits of the serial number, as outlined below, this change is recorded in the parts list.

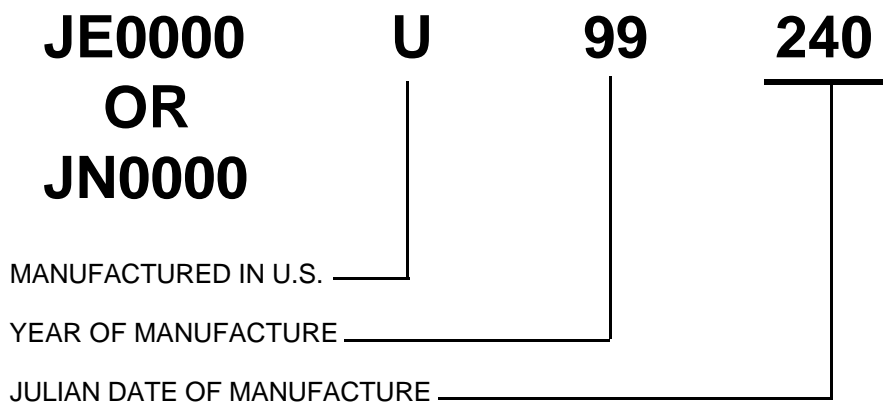
→> **U99240** indicates part is used on units up to and including serial number ending in **U99240**.

U99241 →> indicates part is used on units with serial number ending in **U99241** or higher.

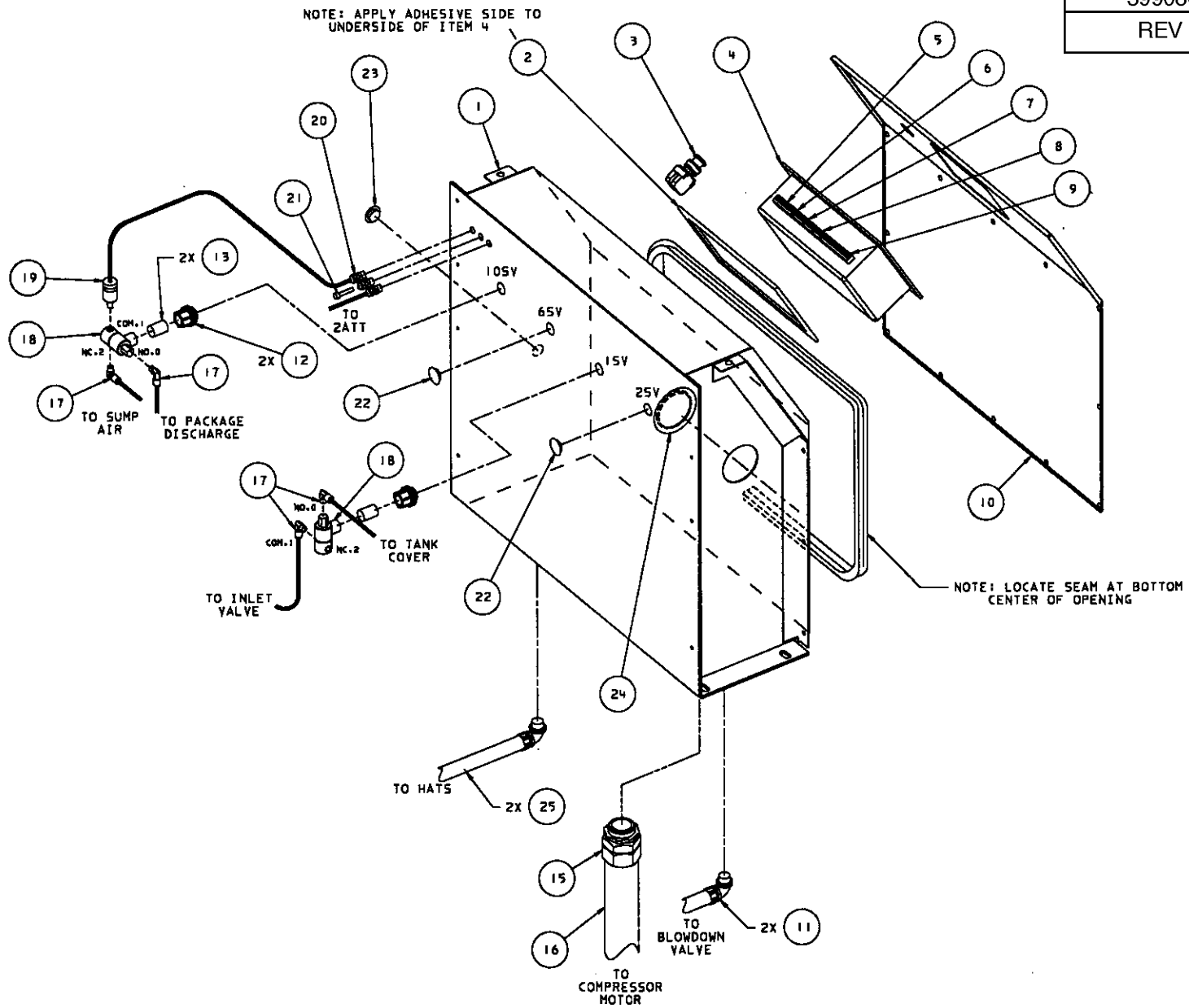
HOWTO ORDER PARTS

In order that all avoidable errors be eliminated when ordering parts, please specify the following:

1. The model number of the unit as shown on the Compressor Data Plate.
2. The serial number of the unit as shown on the Compressor Data Plate.
3. The form number of this manual.
4. The reference number, part number, description and quantity needed exactly as listed.
5. The motor data code shown on the motor data plate.



39908652
REV 02



Assembly, Intellisys/Starter Box/Control Piping (Full Voltage without Modulation)

Ref. No.	Part Number	Qty.	Description	Ref. No.	Part Number	Qty.	Description
1	39836424	1	Box, Intellisys/Starter (NEMA 1)	15	39801973	1	Connector
	39834411	1	Box, Intellisys/Starter (NEMA 4)		39135355	1	Locknut, Seal (NEMA 4)
2	39874763	1	Gasket, Intellisys/Starter	16	39147186	xxx	Conduit
3	92823541	1	Switch, Emergency Stop	17	39155577	4	Elbow (NEMA 1)
4	39817655	1	Controller, Intellisys (English)		39155478	4	Elbow (NEMA 4)
	39830906	1	Controller, Intellisys (Spanish/Portuguese)	18	39583943	2	Valve, Solenoid 3-Way (NEMA 1)
5	39191648	1	Plug, 11 Position		39497672	2	Valve, Solenoid 3-Way (NEMA 4)
6	39186093	1	Plug, 6 Position	19	39853791	1	Transducer, Pressure
7	39191630	1	Plug, 5 Position	19A	39153861	1	Bushing (NEMA 4)
8	39186101	1	Plug, 4 Position	20	39173927	3	Gland, Wire
9	39191655	1	Plug, 16 Position	20A	39173935	3	Locknut, Wire Gland
10	39836648	1	Door, Starter (NEMA 1)	21	39155353	1	Plug
	39836655	1	Door, Starter (NEMA 4)	22	39130000	2	Plug (NEMA 1)
10A	39133152	9	Screw (NEMA 1)		39140785	2	Plug (NEMA 4)
10B	39128434	17	Screw (NEMA 4)	23	39140785	1	Plug
10C	39250030	17	Washer (NEMA 4)	24	39178892	1	Plug
10D	39249875	82"	Gasket (NEMA 4)	25	39139332	xxx	Conduit
10E	39250055	AR	Sealant (NEMA 4)				
11	39256631	2	Elbow				
x 12	35275494	3	Connector				
13	39108592	3	Nipple				
14	39124813	xxx	Tubing, .25 Synflex (EP,HP)				
	39497847	xxx	Tubing, .25 Teflon (HXP)				

NOTE:

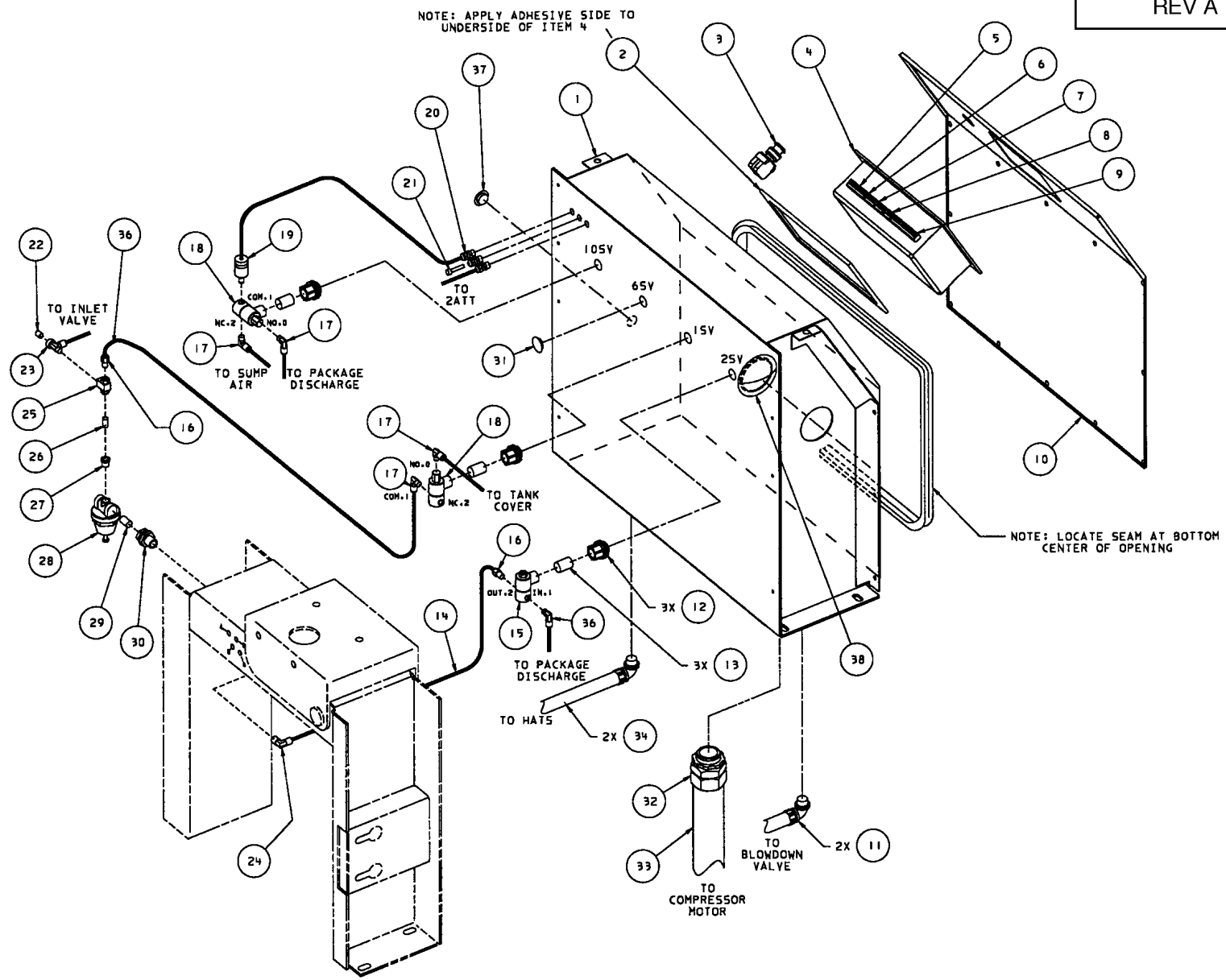
X- REMOVE AND DISCARD O-RINGS ON NEMA 1 UNITS.

AR - AS REQUIRED.

1. STANDARD FASTENERS SUCH AS NUTS, BOLTS, AND SCREWS ARE LISTED AS SUB-ITEMS (EXAMPLE 10B).

2. XXX ORDER PER NUMBER OF INCHES REQUIRED.

54436829
REV A



Assembly, Intellisys/Starter Box/Control Piping (Full Voltage with Modulation)

Ref. No.	Part Number	Qty.	Description	Ref. No.	Part Number	Qty.	Description
1	39836424	1	Box, Intellisys/Starter (NEMA 1)	18	39583943	2	Valve, Solenoid 3-Way (NEMA 1)
	39834411	1	Box, Intellisys/Starter (NEMA 4)		39497672	2	Valve, Solenoid 3-Way (NEMA 4)
2	39874763	1	Gasket, Intellisys/Starter	19	39853791	1	Transducer, Pressure
3	92823541	1	Switch, Emergency Stop	19A	39153861	1	Bushing (NEMA 4)
4	39817655	1	Controller, Intellisys (English)	20	39173927	3	Gland, Wire
	39830906	1	Controller, Intellisys (Spanish/Portuguese)	20A	39173935	3	Locknut, Wire Gland
5	39191648	1	Plug, 11 Position	21	39155353	1	Plug, .25 Tubing
6	39186093	1	Plug, 6 Position	22	95837233	1	Plug, .13 NPT
7	39191630	1	Plug, 5 Position	23	39156468	1	Tee, Adapter
8	39186101	1	Plug, 4 Position	24	39155478	1	Elbow
9	39191655	1	Plug, 16 Position	25	39127261	1	Valve, Shuttle
10	39836648	1	Door, Starter (NEMA 1)	26	95343679	1	Nipple
	39836655	1	Door, Starter (NEMA 4)	27	39153861	1	Bushing
10A	39133152	9	Screw (NEMA 1)	28	39152442	1	Valve, Regulator (EP, HP)
10B	39128434	17	Screw (NEMA 4)		39197595	1	Valve, Regulator (HXP)
10C	39250030	17	Washer, Nylon (NEMA 4)	29	95047908	1	Nipple
10D	39249875	82"	Gasket (NEMA 4)	30	39128012	1	Connector, Bulkhead
10E	39250055	AR	Sealant (NEMA 4)	31	39130000	1	Plug, (NEMA 1)
11	39256631	2	Elbow		39140785	1	Plug, (NEMA 4)
X 12	35275494	3	Connector	32	39801973	1	Connector
13	39108592	3	Nipple		39135355	1	Locknut, Seal (NEMA 4)
14	39124813	xxx	Tubing, .25 Synflex (EP, HP)	33	39147186	xxx	Conduit
	39497847	xxx	Tubing, .25 Teflon (HXP)	34	39139332	xxx	Conduit
15	39530852	1	Solenoid 2-Way (2SV) (NEMA 1)	36	39155577	2	Elbow
	39497680	1	Solenoid 2-Way (2SV) (NEMA 4)	37	39140785	1	Plug
16	39156393	2	Connector	38	39178892	1	Plug
17	39155577	4	Elbow (NEMA 1)				
	39155478	4	Elbow (NEMA 4)				

NOTE:

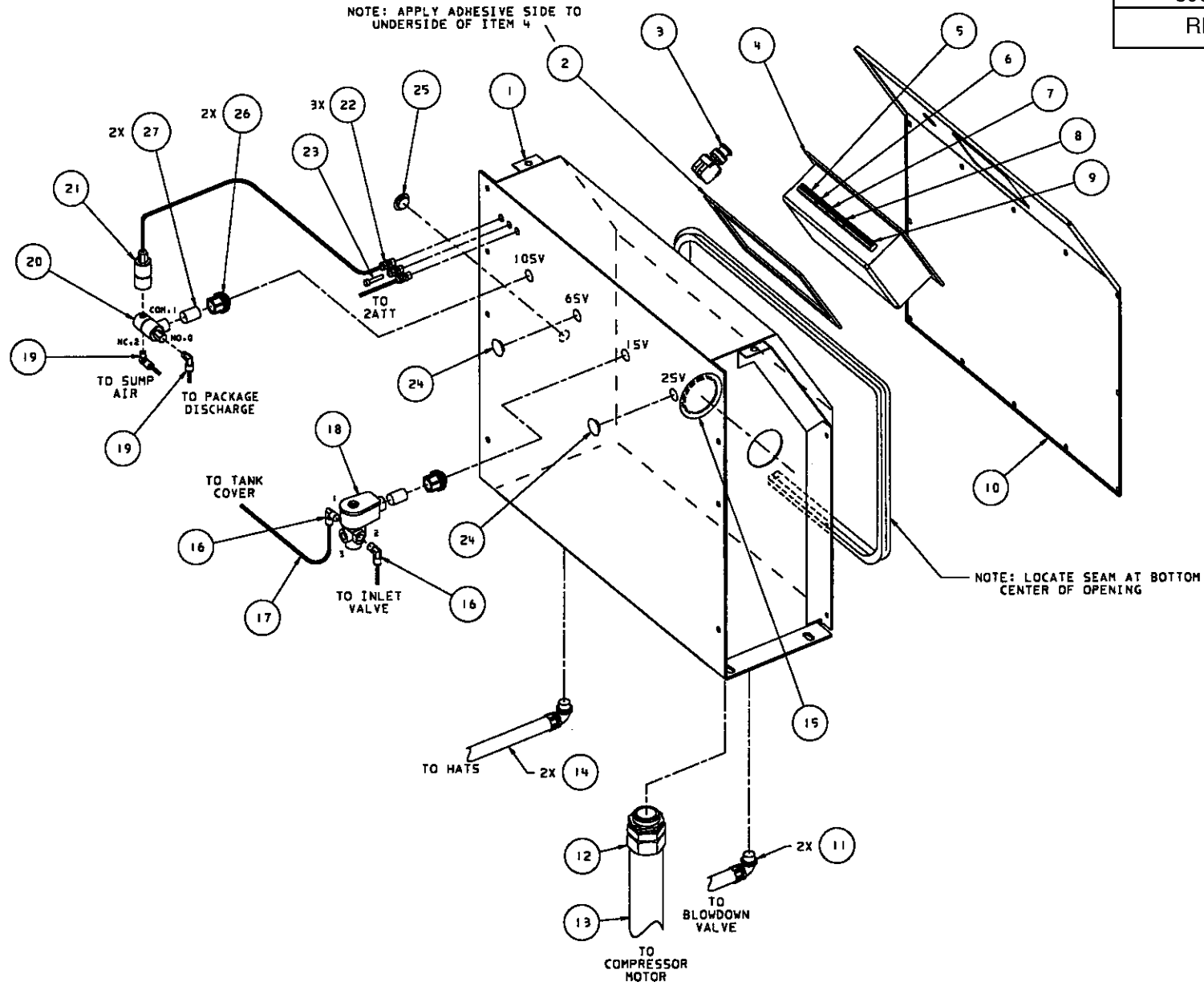
X- REMOVE AND DISCARD O-RINGS ON NEMA 1 UNITS.

AR - AS REQUIRED.

1. STANDARD FASTENERS SUCH AS NUTS, BOLTS, AND SCREWS ARE LISTED AS SUB-ITEMS (EXAMPLE 10B).

2. XXX ORDER PER NUMBER OF INCHES REQUIRED.

39908504
REV 02



Assembly, Intellisys/Starter Box/Control Piping (Star-Delta without Modulation)

Ref. No.	Part Number	Qty.	Description	Ref. No.	Part Number	Qty.	Description
1	39836424	1	Box, Intellisys/Starter (NEMA 1)	15	39178892	1	Plug
	39834411	1	Box, Intellisys/Starter (NEMA 4)	16	39155478	2	Elbow
2	39874763	1	Gasket, Intellisys/Starter	17	39124813	xxx	Tubing, .25 Synflex (EP,HP)
3	92823541	1	Switch, Emergency Stop		39497847	xxx	Tubing, .25 Teflon (HXP)
4	39817655	1	Controller, Intellisys (English)	18	39418926	1	Valve, Solenoid (1SV) (NEMA 1)
	39830906	1	Controller, Intellisys (Spanish/Portuguese)		39146741	1	Valve, Solenoid (1SV) (NEMA 4)
5	39191648	1	Plug, 11 Position	19	39155577	2	Elbow (NEMA 1)
6	39186093	1	Plug, 6 Position		39155478	2	Elbow (NEMA 4)
7	39191630	1	Plug, 5 Position	20	39583943	2	Valve, Solenoid 3-Way (NEMA 1)
8	39186101	1	Plug, 4 Position		39497672	2	Valve, Solenoid 3-Way (NEMA 4)
9	39191655	1	Plug, 16 Position	21	39853791	1	Transducer, Pressure
10	39836648	1	Door, Starter (NEMA 1)	21A	39153861	1	Bushing (NEMA 4)
	39836655	1	Door, Starter (NEMA 4)	22	39173927	3	Gland, Wire
10A	39133152	9	Screw (NEMA 1)	22A	39173935	3	Locknut, Wire Gland
10B	39128434	17	Screw (NEMA 4)	23	39155353	1	Plug
10C	39250030	17	Washer (NEMA 4)	24	39130000	2	Plug (NEMA 1)
10D	39249875	82"	Gasket (NEMA 4)		39140785	2	Plug (NEMA 4)
10E	39250055	AR	Sealant (NEMA 4)	25	39140785	3	Plug
11	39256631	2	Elbow	x 26	35275494	2	Connector
12	39801973	1	Connector (30/40 HP)	27	39108592	2	Nipple
	39135355	1	Locknut, Seal (NEMA 4) (30/40 HP)				
	39479456	1	Connector (22/30 KW)				
	39135330	1	Locknut, Seal (NEMA 4) (22/30 KW)				
	95333266	1	Connector (NEMA 4)				
13	39147186	xxx	Conduit (30/40 HP)				
	39144100	xxx	Conduit (22/30 KW)				
14	39139332	xxx	Conduit				

NOTE:

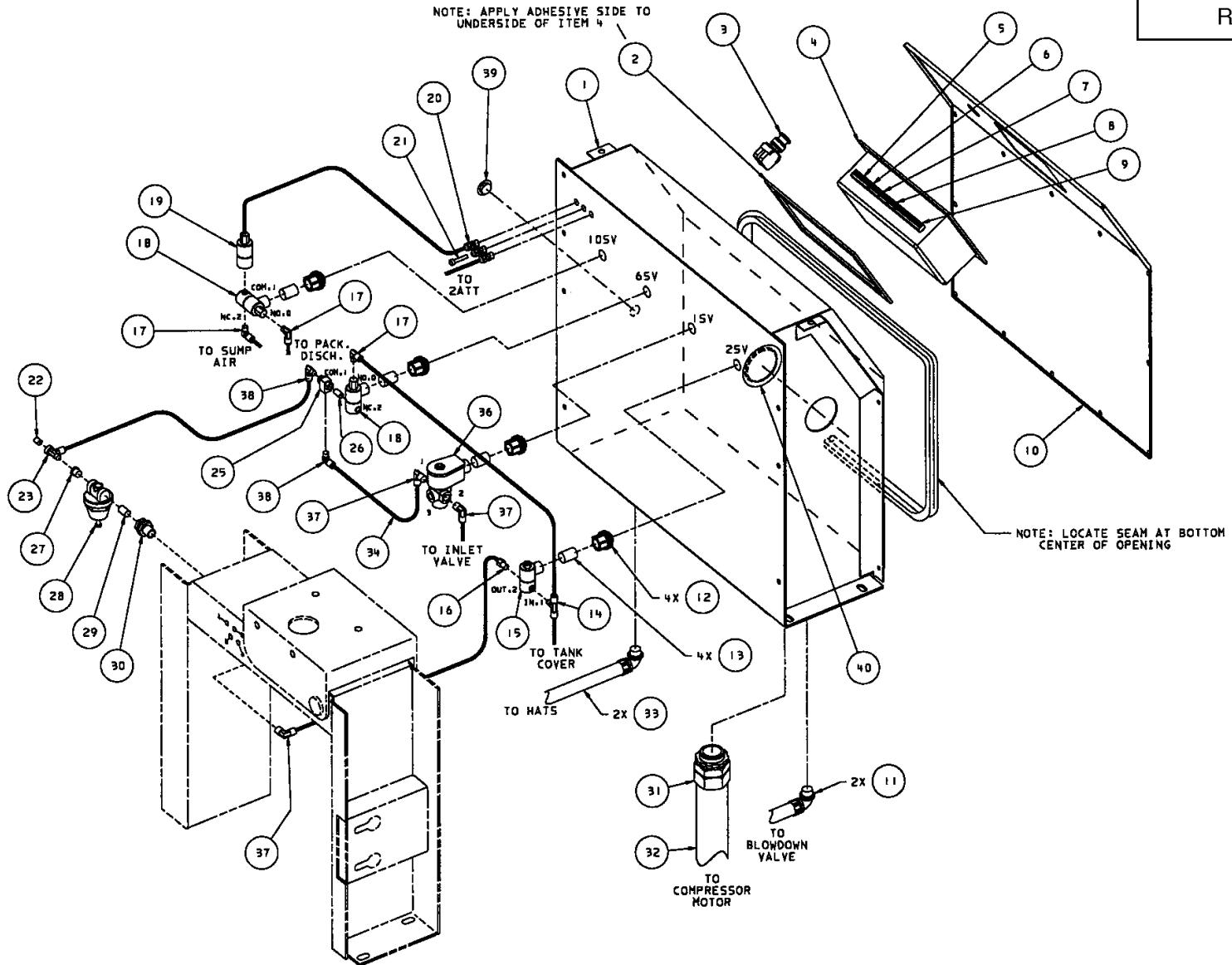
X- REMOVE AND DISCARD O-RINGS ON NEMA 1 UNITS.

AR - AS REQUIRED.

1. STANDARD FASTENERS SUCH AS NUTS, BOLTS, AND SCREWS ARE LISTED AS SUB-ITEMS (EXAMPLE 10B).

2. XXX ORDER PER NUMBER OF INCHES REQUIRED.

54436837
REV A



Assembly, Intellisys/Starter Box/Control Piping (Star-Delta with Modulation)

Ref. No.	Part Number	Qty.	Description	Ref. No.	Part Number	Qty.	Description
1	39836424	1	Box, Intellisys/Starter (NEMA 1)	19	39853791	1	Transducer, Pressure
	39834411	1	Box, Intellisys/Starter (NEMA 4)	19A	39153861	1	Bushing (NEMA 4)
2	39874763	1	Gasket, Intellisys/Starter	20	39173927	3	Gland, Wire
3	92823541	1	Switch, Emergency Stop	20A	39173935	3	Locknut, Wire Gland
4	39817655	1	Controller, Intellisys (English)	21	39155353	1	Plug, .25 Tubing
	39830906	1	Controller, Intellisys (Spanish/Portuguese)	22	95837233	1	Plug, .13 NPT
5	39191648	1	Plug, 11 Position	23	39156468	1	Tee, Adapter
6	39186093	1	Plug, 6 Position	25	39127261	1	Valve, Shuttle
7	39191630	1	Plug, 5 Position	26	95343679	1	Nipple
8	39186101	1	Plug, 4 Position	26A	39153861	1	Bushing (NEMA 4)
9	39191655	1	Plug, 16 Position	27	39153861	1	Bushing
10.	39836648	1	Door, Starter (NEMA 1)	28	39199476	1	Valve, Regulator, (EP, HP, ML, MM, MH)
	39836655	1	Door, Starter (NEMA 4)		39199484	1	Valve, Regulator, (HXP, MU)
10A	39133152	9	Screw (NEMA 1)	29	95047908	1	Nipple
10B	39128434	17	Screw (NEMA 4)	30	39128012	1	Connector, Bulkhead
10C	39250030	17	Washer, Nylon (NEMA 4)	31	39801973	1	Connector (30/40 HP)
10D	39249875	82"	Gasket (NEMA 4)		39135355	1	Locknut, Seal (NEMA 4) (30/40 HP)
10E	39250055	AR	Sealant (NEMA 4)		39479456	1	Connector (22/30 KW)
	39256631	2	Elbow		39135330	1	Locknut, Seal (NEMA 4) (22/30 KW)
X 12	35275494	4	Connector	32	39147186	xxx	Conduit (30/40 HP)
13	39108592	4	Nipple		39144100	xxx	Conduit (22/30 KW)
14	39156385	1	Tee	33	39139332	xxx	Conduit
15	39530852	1	Valve, Solenoid 2-Way (2SV) (NEMA 1)	34	39124813	xxx	Tubing, .25 Synflex, (EP, HP, ML, MM, MH)
	39497680	1	Valve, Solenoid 2-Way (2SV) (NEMA 4)		39497647	xxx	Tubing, .25 Teflon, (HXP, MU)
16	39156393	1	Connector	36	39418926	1	Valve, Solenoid (1SV) (NEMA 1)
17	39155577	3	Elbow (NEMA 1)		39146741	1	Valve, Solenoid (1SV) (NEMA 4)
	39155478	3	Elbow (NEMA 4)	37	39155478	3	Elbow
18	39583943	2	Valve, Solenoid 3-Way (NEMA 1)	38	39155577	2	Elbow
	39497672	2	Valve, Solenoid 3-Way (NEMA 4)	39	39140785	1	Plug
				40	39178892	1	Plug

NOTE:

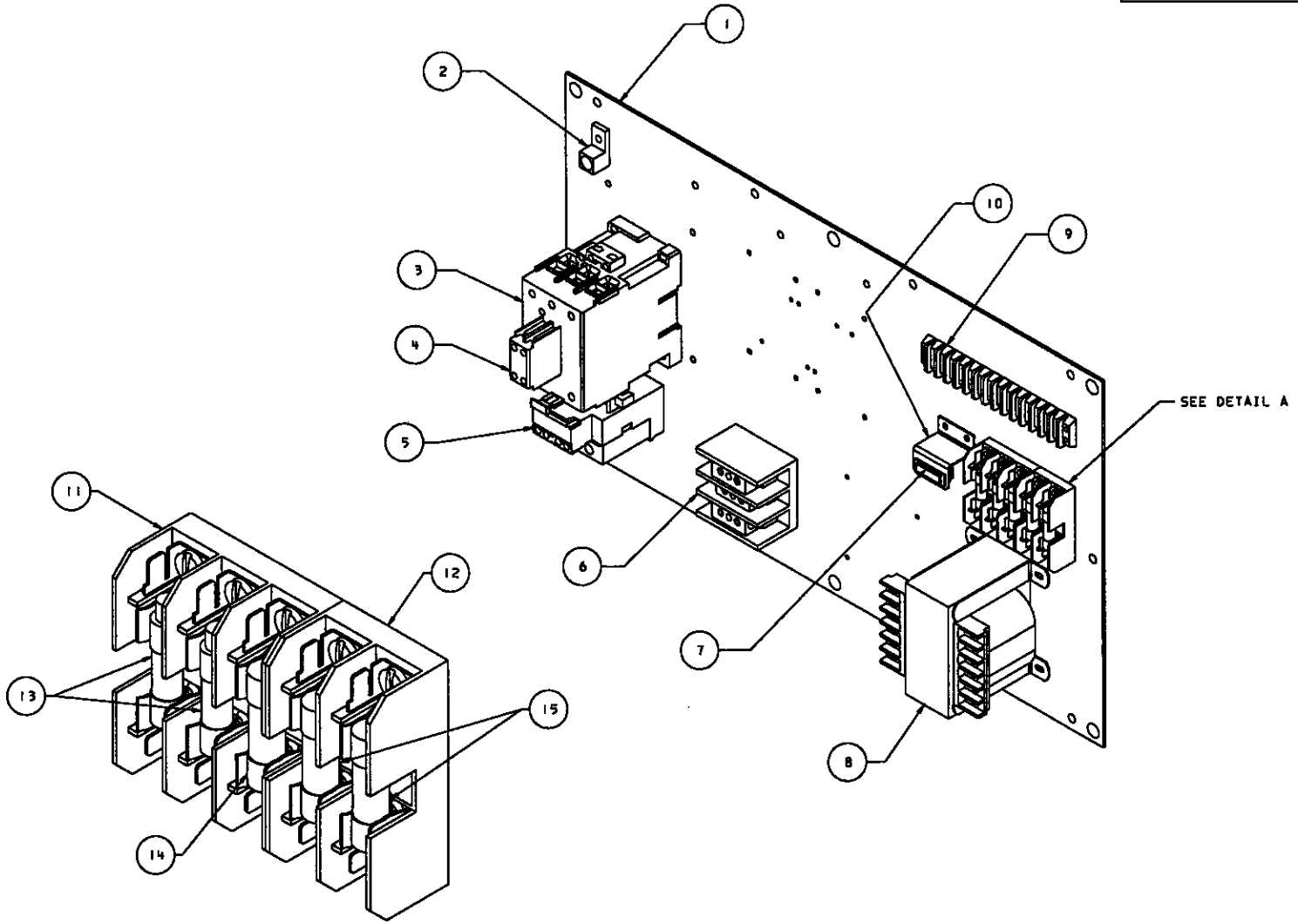
X- REMOVE AND DISCARD O-RINGS ON NEMA 1 UNITS.

AR - AS REQUIRED.

1. STANDARD FASTENERS SUCH AS NUTS, BOLTS, AND SCREWS ARE LISTED AS SUB-ITEMS (EXAMPLE 10B)

2. XXX ORDER PER NUMBER OF INCHES REQUIRED.

39902432
REV 01

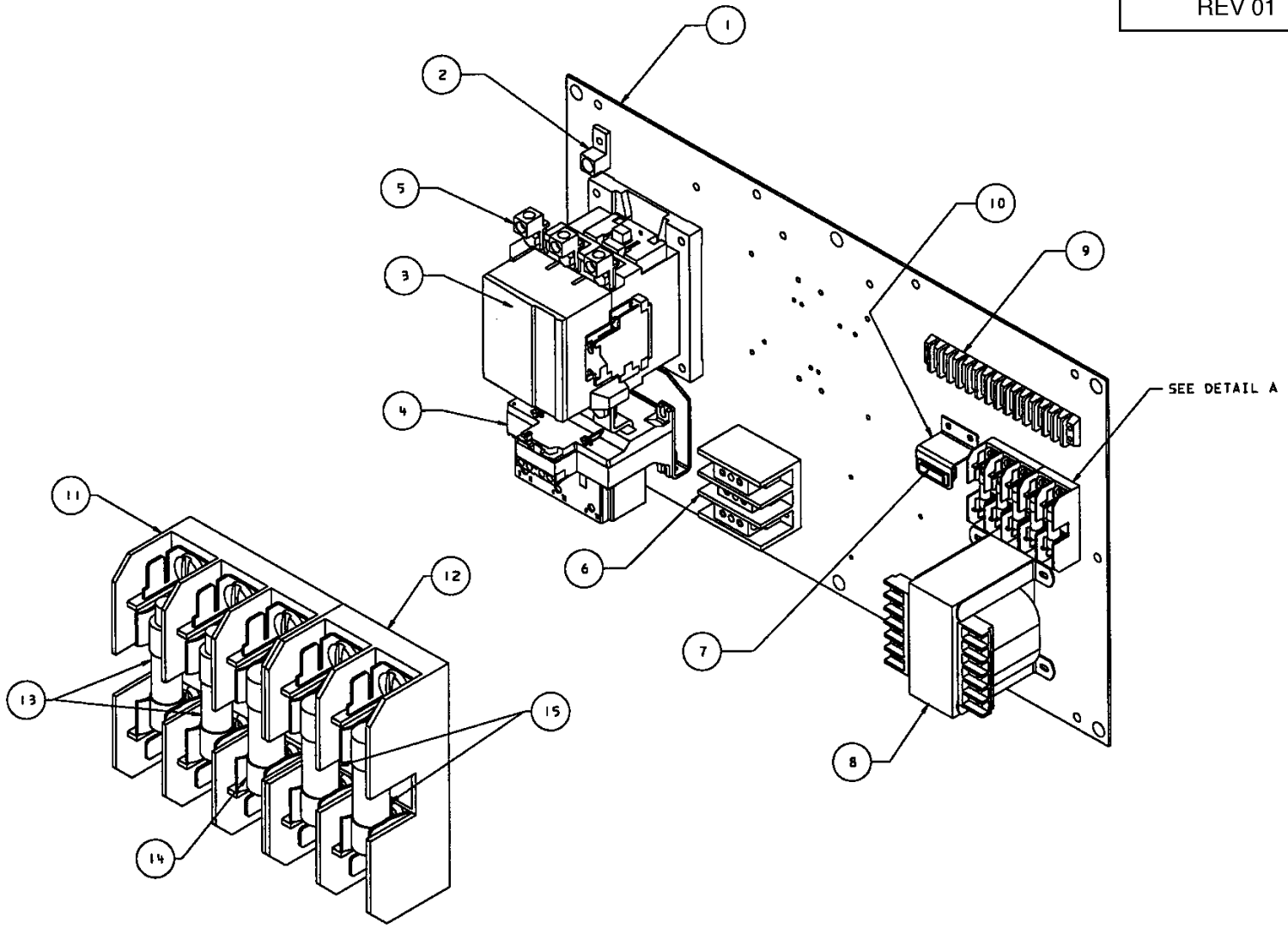


DETAIL A

Assembly, Starter C60 and C85 Full Voltage

Ref. No.	Part Number	Qty.	Description
1	39900618	1	Panel, Starter
2	39190939	1	Lug, Ground
2A	39141809	1	Screw
2B	39128541	1	Nut
3	39251020	1	Contact, C85
	39251004	1	Contact, C60
3A	39251335	1	Coil
4	39255138	1	Aux. Contact, 2 N.O.
5	39251087	1	Relay, Overload
6	39164520	1	Block, Terminal
7	39196225	1	Light, Power-On
8	39301981	1	Transformer, Control 230VA (200/230/460/575V)
	39306014	1	Transformer, Control 230VA (200/220/400/440V)
	39306022	1	Transformer, Control 230VA (380V)
8A	35252279	4	Screw
9	35267202	1	Block, 14-Terminal
9A	35249721	4	Screw
10	39302146	1	Bracket, Power-On Light
10A	35249721	2	Screw
11	39479035	1	Fuseholder, 3 Pole
11A	35249721	2	Screw
12	39480504	1	Fuseholder, 2 Pole
12A	35249721	1	Screw
13	39178710	2	Fuse, 1.8A (1FU/2FU)
14	39113535	1	Fuse, 2.0A (3FU)
15	39113535	2	Fuse, 2.0A (4FU/5FU)

39902424
REV 01

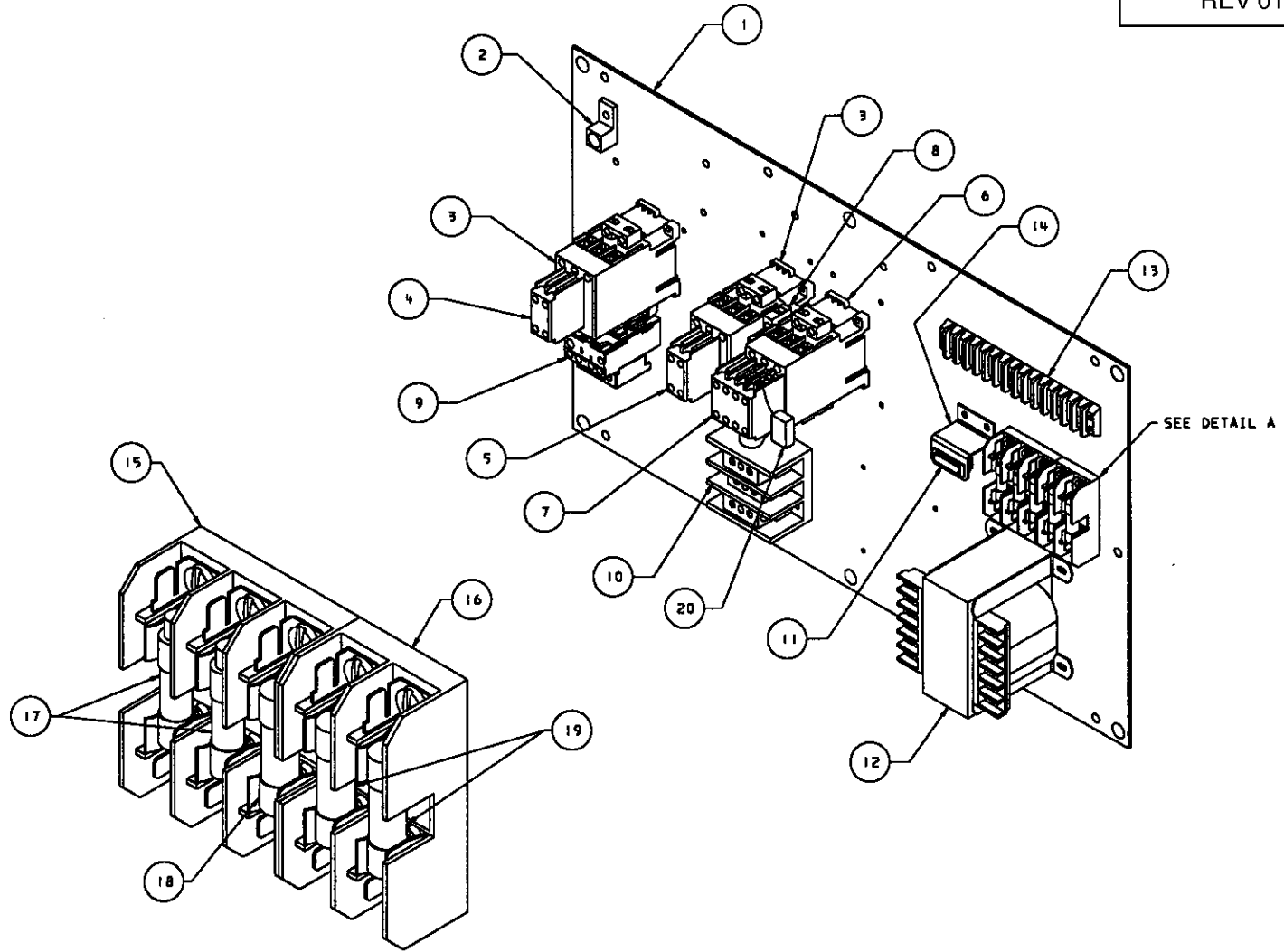


DETAIL A

Assembly, Starter B110 and B180 Full Voltage

Ref. No.	Part Number	Qty.	Description
1	39900618	1	Panel, Starter
2	39190939	1	Lug, Ground
2A	39141809	1	Screw
2B	39128541	1	Nut
3	39251046	1	Contact, B180 w/1 N.O. Aux. Contact
	39251038	1	Contact, B110 w/1 N.O. Aux. Contact
3A	39251368	1	Coil, B180
3B	39251350	1	Coil, B110
3C	39251400	1	Contacts, B180
3D	39251392	1	Contacts, B110
3E	39251152	1	Aux. Contact, 1 N.O.
4	39251103	1	Relay, Overload (B180)
	39251095	1	Relay, Overload (B110)
5	39251442	6	Lug, Terminal
6	39164520	1	Block, Terminal
7	39196225	1	Light, Power-On
8	39491519	1	Transformer, Control 330VA (200/230/460/575V)
	39499306	1	Transformer, Control 330VA (200/220/400/440V)
	39313143	1	Transformer, Control 330VA (380V)
8A	35252279	4	Screw
9	35267202	1	Block, 14-Terminal
9A	35249721	4	Screw
10	39302146	1	Bracket, Power-On Light
10A	35249721	2	Screw
11	39479035	1	Fuseholder, 3 Pole
11A	35249721	2	Screw
12	39480504	1	Fuseholder, 2 Pole
12A	35249721	1	Screw
13	39178728	2	Fuse, 2.5A (1FU/2FU)
14	39113527	1	Fuse, 3.2A (3FU)
15	39113535	2	Fuse, 2.0A (4FU/5FU)

39902473
REV 01

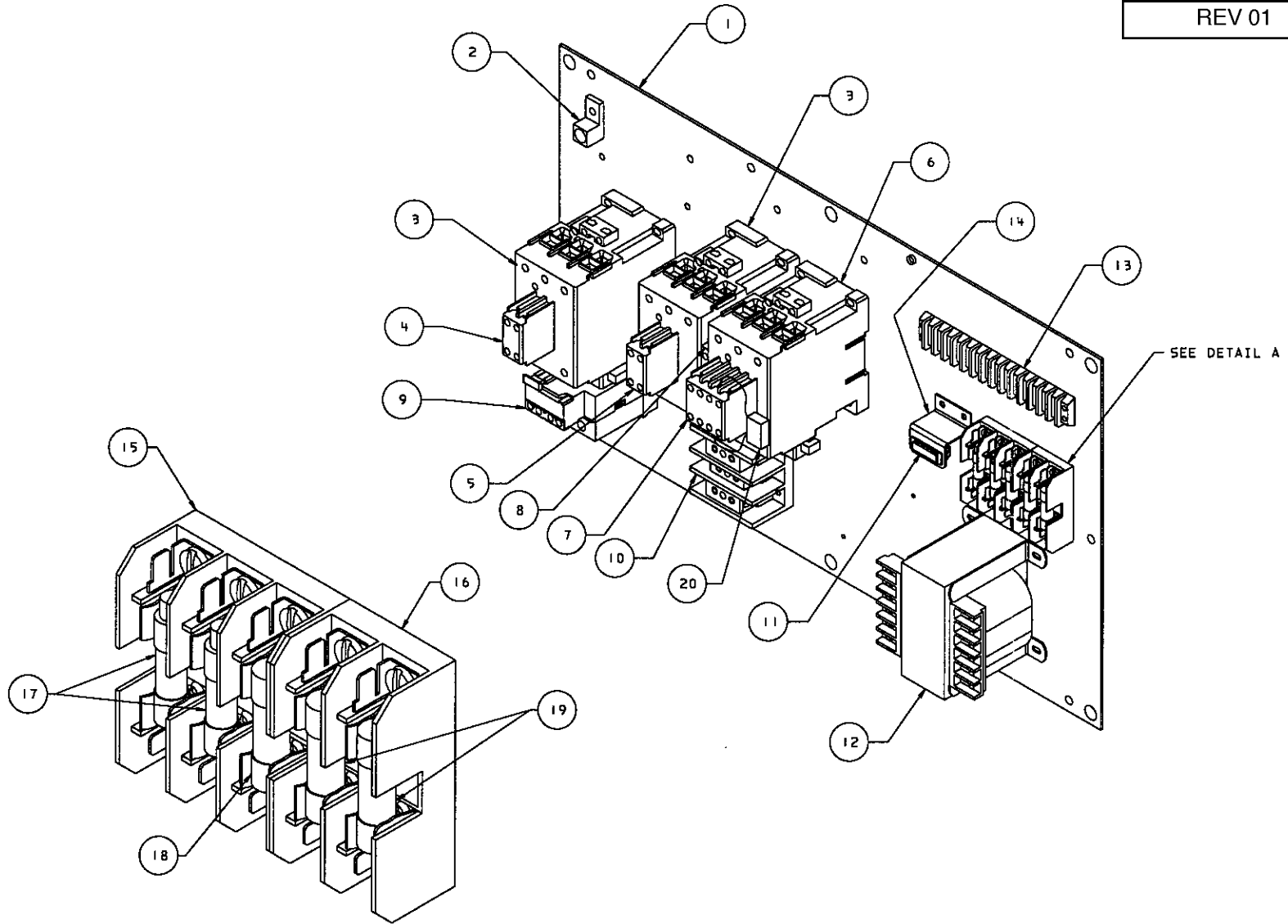


DETAIL A

Assembly, Starter C30/C23, C37/C30 and C43/C43 Star-Delta

Ref. No.	Part Number	Qty.	Description
1	39900618	1	Panel, Starter
2	39190939	1	Lug, Ground
2A	39141809	1	Screw
2B	39128541	1	Nut
3	39250998	2	Contactor, C43 (1M/2M)
	39251061	2	Contactor, C37 (1M/2M)
	39252010	2	Contactor, C30 (1M/2M)
3A	39251327	2	Coil, (C43)
	39251319	2	Coil, (C37/C30)
4	39255138	1	Aux. Contact, 2 N.O.
5	39251137	1	Aux. Contact, 1 N.O./1 N.C.
6	39250998	1	Contactor, C43 (1S)
	39252010	1	Contactor, C30 (1S)
	39252036	1	Contactor, C23 (1S)
6A	39251327	1	Coil, (C43)
	39251319	1	Coil, (C30/C23)
7	39251145	1	Aux. Contact, 2 N.O./2 N.C.
8	39251186	1	Interlock, Mechanical
9	39251079	1	Relay, Overload (C43/C43)
	39251988	1	Relay, Overload (C37/C30 & C30/C23)
10	39164520	1	Block, Terminal
11	39196225	1	Light, Power On
12	39301981	1	Transformer, Control 230VA (200/230/460/575V)
	39306014	1	Transformer, Control 230VA (200/220/400/440V)
	39306022	1	Transformer, Control 230VA (380V)
	39318134	1	Transformer, Control 230VA (220/380/415/550V)
12A	35252279	4	Screw
13	35267202	1	Block, 14-Terminal
13A	35249721	4	Screw
14	39302146	1	Bracket, Power-On Light
14A	35249721	2	Screw
15	39479035	1	Fuseholder, 3 Pole
15A	35249721	2	Screw
16	39480504	1	Fuseholder, 2 Pole
16A	35249721	1	Screw
17	39178710	2	Fuse, 1.8A (1FU/2FU)
18	39113535	1	Fuse, 2.0A (3FU)
19	39113535	2	Fuse, 2.0A (4FU/5FU)
20	39203443	1	Suppressor, Arc

39902465
REV 01

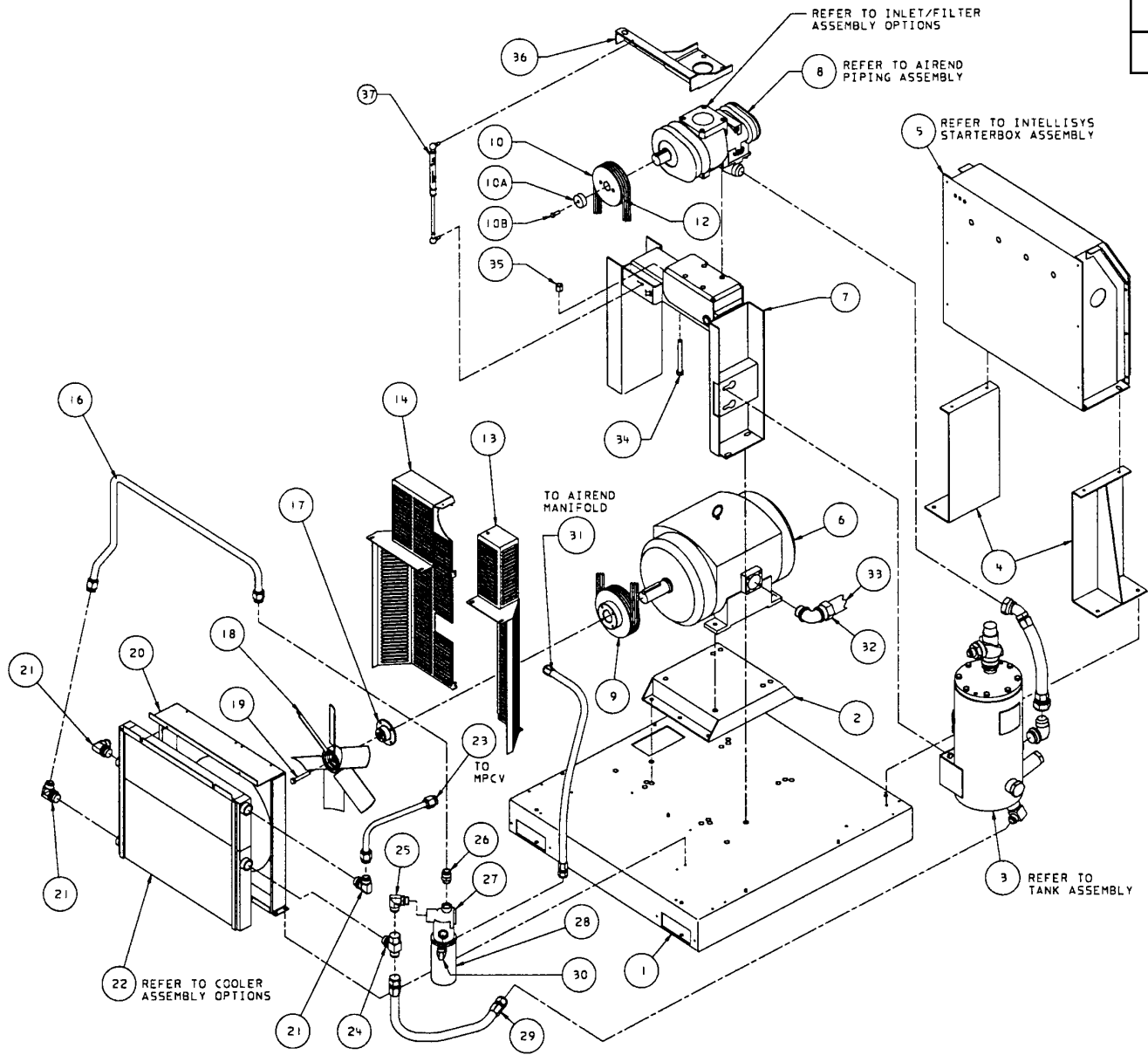


DETAIL A

Assembly, Starter C60/C43, C72/C60 and C85/C72 Star-Delta

Ref. No.	Part Number	Qty.	Description
1	39900618	1	Panel, Starter
2	39190939	1	Lug, Ground
2A	39141809	1	Screw
2B	39128541	1	Nut
3	39251020	2	Contactor, C85 (1M/2M)
	39251012	2	Contactor, C72 (1M/2M)
	39251004	2	Contactor, C60 (1M/2M)
3A	39251335	2	Coil (C85/C72/C60)
4	39255138	1	Aux. Contact, 2 N.O.
5	39251137	1	Aux. Contact, 1 N.O./1 N.C.
6	39251012	1	Contactor, C72 (1S)
	39251004	1	Contactor, C60 (1S)
	39250998	1	Contactor, C43 (1S)
6A	39251335	1	Coil, (C72/C60)
	39251327	1	Coil, C43
7	39251145	1	Aux. Contact, 2 N.O./2 N.C.
8	39251186	1	Interlock, Mechanical
9	39251087	1	Relay, Overload
10	39164520	1	Block, Terminal
11	39196225	1	Light, Power-On
12	39301981	1	Transformer, Control 230VA (200/230/460/575V)
	39306014	1	Transformer, Control 230VA (200/220/400/440V)
	39306022	1	Transformer, Control 230VA (380V)
	39318134	1	Transformer, Control 230VA (220/380/415/550V)
12A	35252279	4	Screw
13	35267202	1	Block, 14-Terminal
13A	35249721	4	Screw
14	39302146	1	Bracket, Power-On Light
14A	35249721	2	Screw
15	39479035	1	Fuseholder, 3 Pole
15A	35249721	2	Screw
16	39480504	1	Fuseholder, 2 Pole
16A	35249721	1	Screw
17	39178710	2	Fuse, 1.8A (1FU/2FU)
18	39113535	1	Fuse, 2.0A (3FU)
19	39113535	2	Fuse, 2.0A (4FU/5FU)
20	39203443	1	Suppressor, Arc

54434501
REV A



Assembly, Major Components

Ref. No.	Part Number	Qty.	Description	Ref. No.	Part Number	Qty.	Description
1	39898986	1	Base	17	39834494	1	Hub, Fan 1.875 Shaft (40 HP)
2	39900485	1	Support, Motor 320 Frame		39834486	1	Hub, Fan 1.625 Shaft (30 HP)
	39900493	1	Support, Motor 280 Frame		54427844	1	Hub, Fan 42MM Shaft (22/30 KW)
	54430905	1	Support, Motor 180 Frame (22/30 KW)	17A	95928990	4	Screw
2A	39116330	4	Screw	18	39836069	1	Fan, 18" Dia. (30/40 HP)
3	xxxxxxx	1	Assembly, Separator Tank		39853973	1	Fan, 18" Dia. (22/30KW)
3A	39116330	2	Screw	18A	39181987	3	Screw
4	39836507	2	Support, Starter	19	95929113	1	Screw (30/40 HP)
4A	39178678	4	Screw		39173687	1	Screw (20/30 KW)
5	xxxxxxx	1	Assembly, Intellisys/Starter	20	39862776	1	Box, Cooler
5A	39178678	4	Screw	20A	39133145	4	Screw
6	xxxxxxx	1	Motor	21	95938171	3	Elbow
6A	39160478	4	Screw (30 HP & 22/30 KW)	22	39837661	1	Cooler, Combination Oil/After
6B	39128517	4	Screw (40HP ODP)	22A	39133152	4	Screw
6C	95930723	4	Screw (40 HP TEFC)	22B	95929071	2	Washer
6D	95929188	4	Lockwasher (40HP TEFC)	22C	39128541	2	Nut
7	54408562	1	Support, Airend	23	39588603	1	Tube, MPCV To Aftercooler
7A	39178678	4	Screw	24	39301957	1	Manifold, Oil
8	xxxxxxx	1	Airend	25	95368890	1	Elbow
8A	96725080	4	Screw	26	95955860	1	Connector
9	SEE TABLE ON PAGE 22			27	39566237	1	Housing, Thermo Valve/Oil Filter
10	SEE TABLE ON PAGE 22				39441944	1	Element, Thermo
12	SEE TABLE ON PAGE 22			28	39907175	1	Filter, Oil
13	39862750	1	Guard, Fan Left	29	39572292	1	Hose
13A	39133145	6	Screw	30	39152368	1	Elbow
14	39862743	1	Guard, Fan Right	31	39572011	1	Hose
14A	39133145	3	Screw	32	39301965	1	Elbow (30/40 HP)
16	39834999	1	Tube, Oilcooler To Thermo Valve		54435110	1	Elbow (22/30 KW)
				33	39147186	18"	Conduit (30/40 HP)
					39144100	66"	Conduit (22/30 KW)
				34	39191515	1	Screw, Adjusting
				35	95423687	1	Nut
				36	54421284	1	Bracket, Gas Spring
				37	39592951	1	Spring, Gas
				37A	39128558	2	Nut

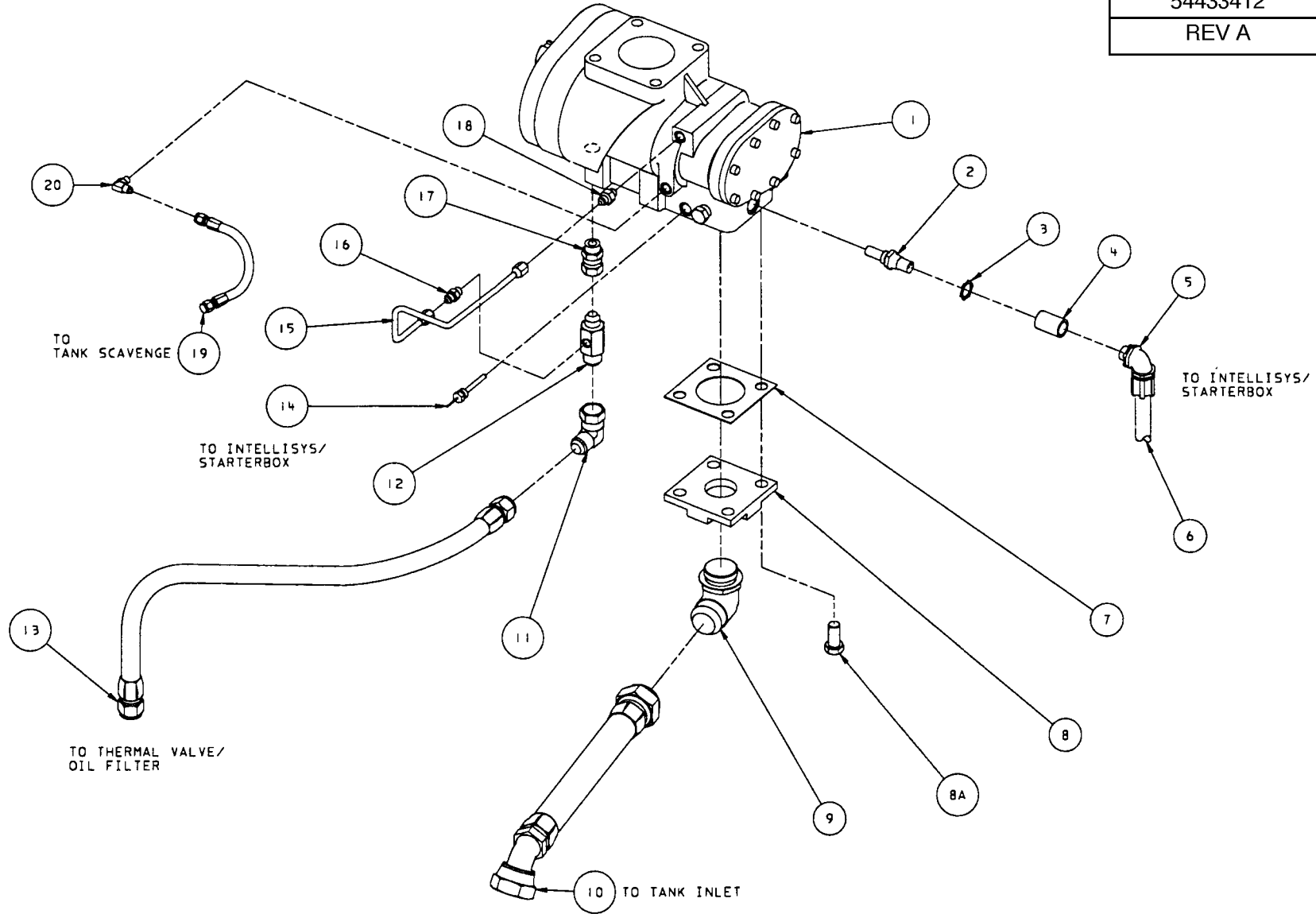
NOTE: STANDARD FASTENERS SUCH AS NUTS, BOLTS, AND SCREWS ARE LISTED AS SUB-ITEMS (EXAMPLE: 2A)

Table For Items 9, 10 & 12

Ref. No.	Part Number	Qty.	Description	Ref. No.	Part Number	Qty.	Description
For 30HP-60Hz Units				For 40HP-60Hz Units			
9	54426085	1	Sheave, Driver (EP/HP30)	9	54426077	1	Sheave, Driver (EP/HP40)
	39845276	1	Sheave, Driver (HXP30)		39835871	1	Sheave, Driver (HXP40)
10	39856083	1	Sheave, Driven (EP30)	10	39856000	1	Sheave, Driven (EP40)
	54425913	1	Sheave, Driven (HP30)		39872460	1	Sheave, Driven (HP40)
	54425954	1	Sheave, Driven (HXP30)		54425988	1	Sheave, Driven (HXP40)
10A	39309992	1	Retainer, Sheave	10A	39309984	1	Retainer, Sheave
10B	96702337	1	Screw	10B	96702337	1	Screw
10C	39310321	1	Key	10C	96719943	1	Key
12	39158324	3	V-Belt, 60" (EP, HP30)	12	39158324	4	V-Belt, 60" (EP/HP40)
	39158340	3	V-Belt, 63" (HXP)		39158340	4	V-Belt, 63" (HXP40)
For 22KW-50Hz Units				For 30KW-50Hz Units			
9	54426028	1	Sheave, Driver (ML/MM22)	9	54426069	1	Sheave, Driver (ML/MM30)
	54426010	1	Sheave, Driver (MH22)		54426051	1	Sheave, Driver (MH30)
	54426002	1	Sheave, Driver (MU22)		54426036	1	Sheave, Driver (MU30)
10	39856125	1	Sheave, Driven (ML22)	10	39856000	1	Sheave, Driven (ML30)
	54425921	1	Sheave, Driven (MM22)		39872460	1	Sheave, Driven (MM30)
	54425939	1	Sheave, Driven (MH22)		54425962	1	Sheave, Driven (MH30)
	54425947	1	Sheave, Driven (MU22)		54425970	1	Sheave, Driven (MU30)
10A	39309992	1	Retainer, Sheave	10A	39309984	1	Retainer, Sheave
10B	96702337	1	Screw	10B	96702337	1	Screw
10C	39310321	1	Key	10C	96719943	1	Key
12	39158340	3	V-Belt, 63"	12	39158340	4	V-Belt, 63"

NOTES:

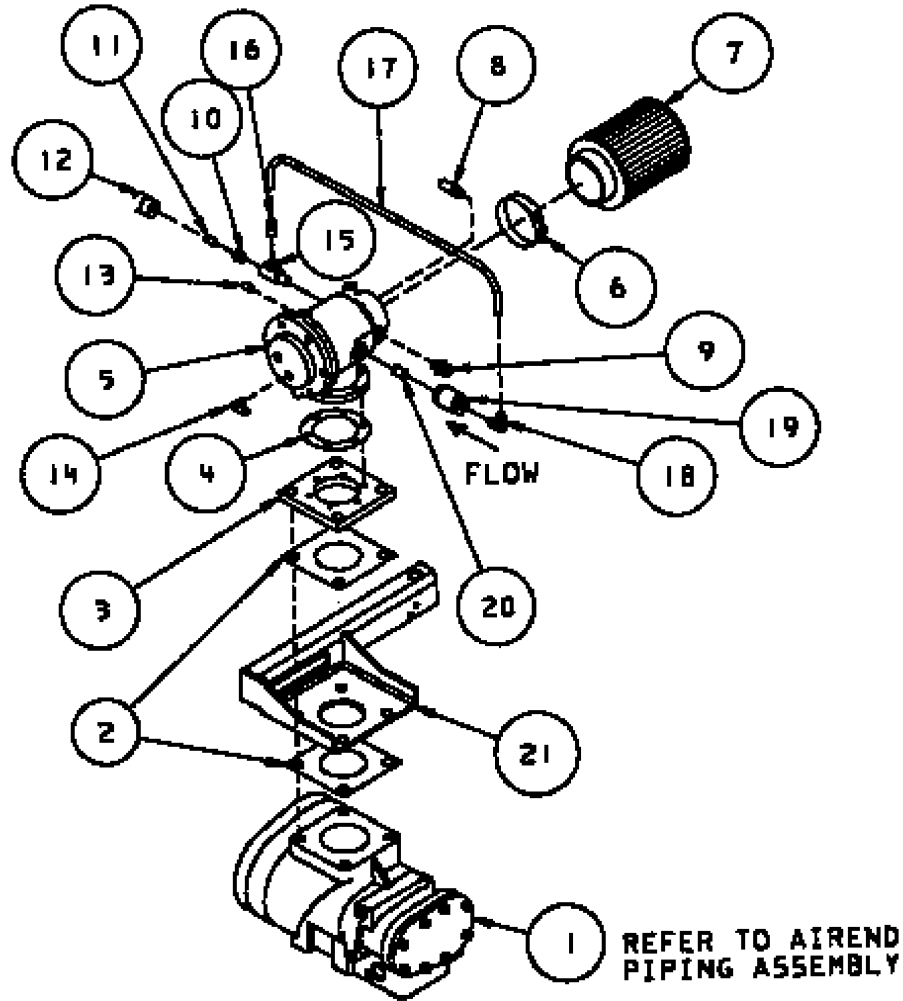
54433412
REV A



Assembly, Airend Piping

Ref. No.	Part Number	Qty.	Description
1	xxxxxxx	1	Airend
2	39419668	1	Switch, High Air Temperature
2A	39404165	1	O-Ring
3	39114079	1	Locknut, Conduit
4	39153382	1	Coupling
5	39256631	1	Elbow, Conduit
6	39139332	24"	Conduit
7	39570999	1	Gasket, Discharge Adapter
8	39570916	1	Plate, Discharge Adapter
8A	39310271	4	Screw
9	39128673	1	Elbow
10	39573670	1	Hose, Airend Discharge
11	95938056	1	Elbow, 90° Swivel
12	93472165	1	Manifold, Oil Feed
13	39572011	1	Hose
14	39538079	1	Sensor, Temperature
14A	39404157	1	O-Ring
15	54419312	1	Tube, Oil Feed (Rear Bearing)
16	95989695	1	Connector
17	96739941	1	Adapter, Swivel Male
18	96739701	1	Connector
19	39572409	1	Hose, Scavenge
20	39311618	1	Elbow

54433701
REV A



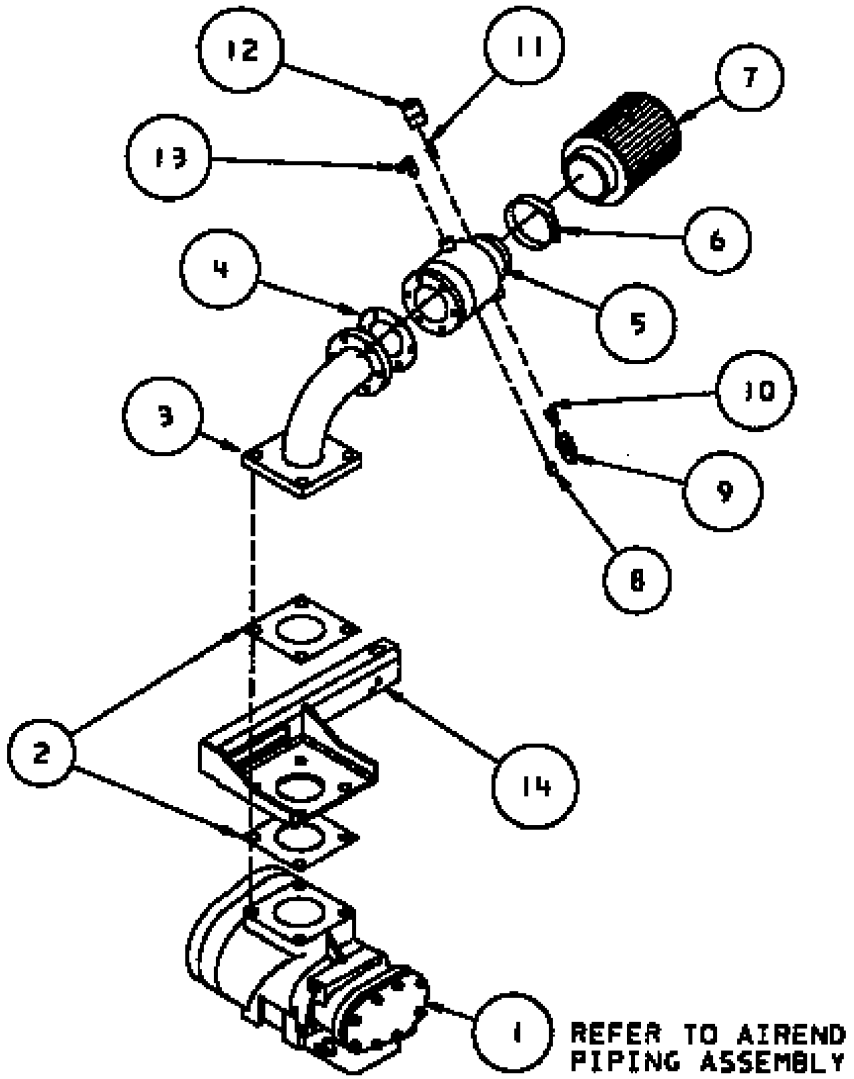
Inlet Valve/Air Filter Assembly (Full Voltage) (Option)

Ref. No.	Part Number	Qty.	Description
1	xxxxxxx	1	Airend
2	39494794	2	Gasket, Inlet Adapter
3	39571005	1	Plate, Inlet Adapter
3A	96738513	4	Screw
4	39496591	1	Gasket
5	92896547	1	Valve, Inlet
5A	35273416	6	Screw
6	39304332	1	Clamp
7	92889534	1	Filter, Air
X 8	39314711	1	Silencer, Blowdown
9	39202965	1	Connector
10	39153861	1	Bushing, Reducing
11	95343679	1	Nipple
12	39124722	1	Indicator, Air Filter
13	95837233	1	Plug
14	39155577	1	Elbow
15	95951836	1	Tee
16	39156435	1	Connector
17	39124813	xxx	Tubing
18	39155478	1	Elbow
19	39182548	1	Valve, Check
20	95047908	1	Nipple
21	54421284	1	Bracket, Gas Spring

NOTES:

1. X - INSTALL USING LOCTITE 271 (35259282).
2. STANDARD FASTENERS SUCH AS NUTS, BOLTS, AND SCREWS ARE LISTED AS SUB-ITEMS (EXAMPLE: 5A).
3. XXX ORDER PER NUMBER OF INCHES REQUIRED.

54433701
REV A



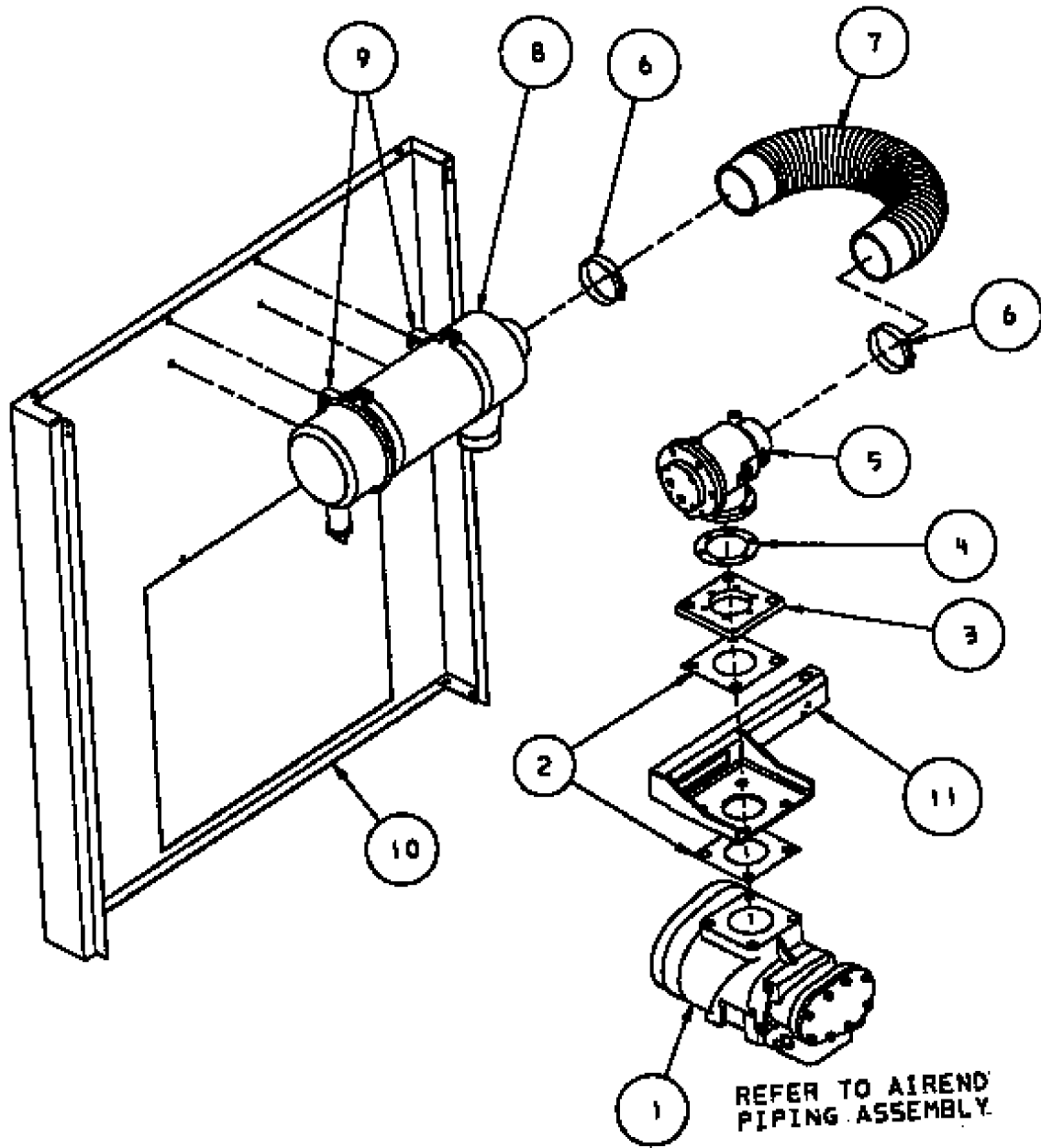
Inlet Valve/Air Filter Assembly (Star-Delta) (Option)

Ref. No.	Part Number	Qty.	Description
1	xxxxxxx	1	Airend
2	39494794	1	Gasket
3	54428362	1	Tube, Intake
3A	96738513	4	Screw
4	39496591	1	Gasket
5	39844485	1	Valve, Inlet
5A	35273416	6	Screw
6	39304332	1	Clamp
7	92889534	1	Filter, Air
8	39184510	1	Plug
9	39306485	1	Connector
10	39317060	1	Silencer
11	95343679	1	Nipple
12	39124722	1	Indicator, Air Filter
13	39155478	1	Elbow
14	54421284	1	Bracket, Gas Spring

NOTE:

1. STANDARD FASTENERS SUCH AS NUTS, BOLTS, AND SCREWS ARE LISTED AS SUB-ITEMS (EXAMPLE: 5A).

54433701
REV A



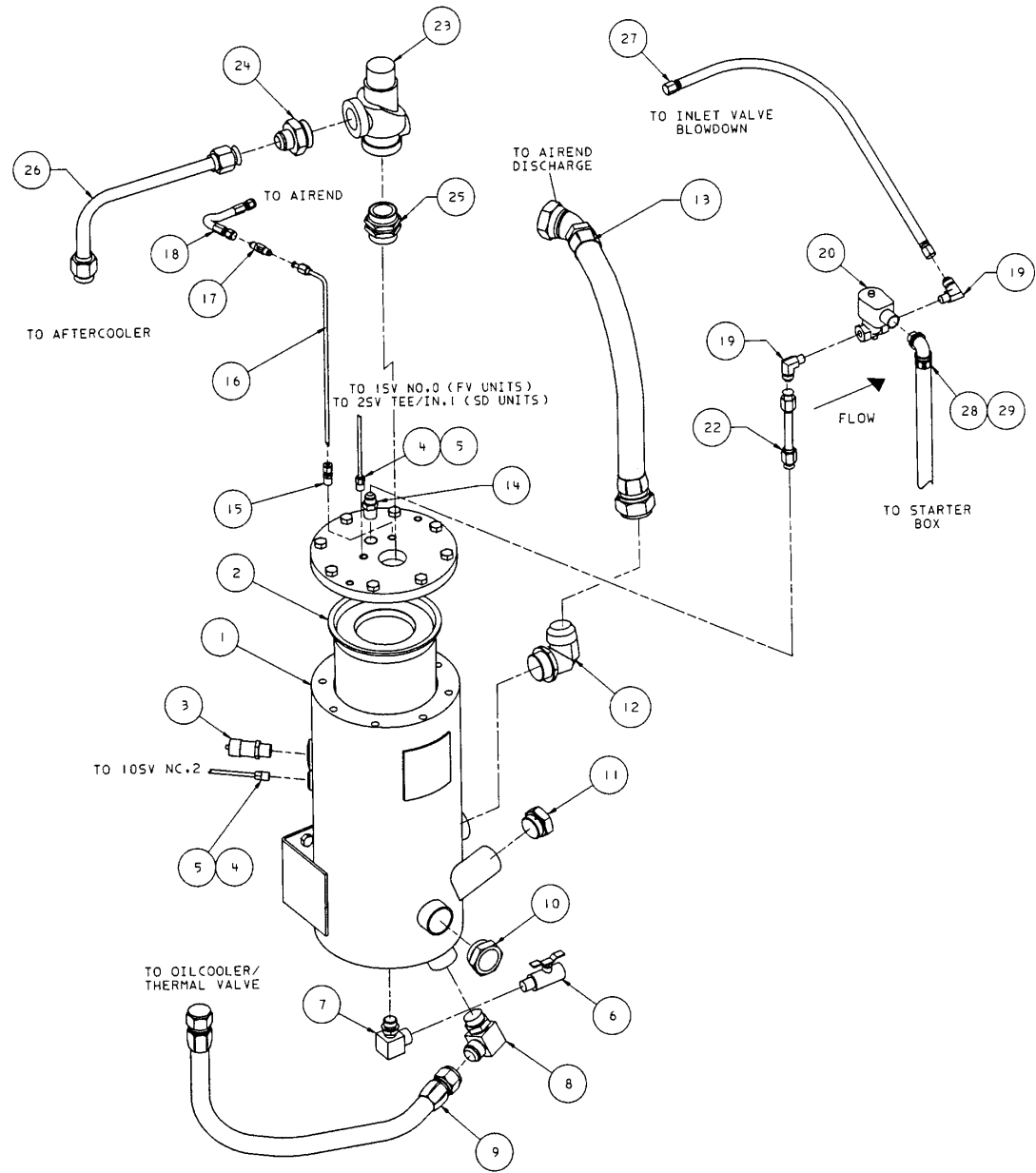
Heavy Duty Filter Assembly (Option)

Ref. No.	Part Number	Qty.	Description
1	xxxxxxx	1	Airend
2	39494794	1	Gasket (Shown as Reference)
3	39571005	1	Plate, Inlet Adapter (Shown as Reference)
3A	96738513	4	Screw
4	39496591	1	Gasket
5	92896547	1	Valve, Full Voltage Inlet (Shown as Reference)
	39840418	1	Valve, Star Delta Inlet (Not Shown)
5A	35273416	6	Screw
6	39304332	2	Clamp
7	39852223	1	Hose (For Full Voltage Inlet Valve)
	39852215	1	Hose (For Star Delta Inlet Valve)
8	39844410	1	Filter, Heavy Duty Air
9	39306030	2	Band, Mounting
9A	39128467	4	Screw
9B	39128566	4	Nut
10	39224399	1	Endcap, Rear (With Foam)
10A	39133145	4	Screw (To Base)
10B	39141809	2	Screw (To Cooler & Shroud)
11	54421284	1	Bracket, Gas Spring

NOTES:

1. STANDARD FASTENERS SUCH AS NUTS, BOLTS, AND SCREWS ARE LISTED AS SUB-ITEMS (EXAMPLE: 3A).

39840186
REV 09

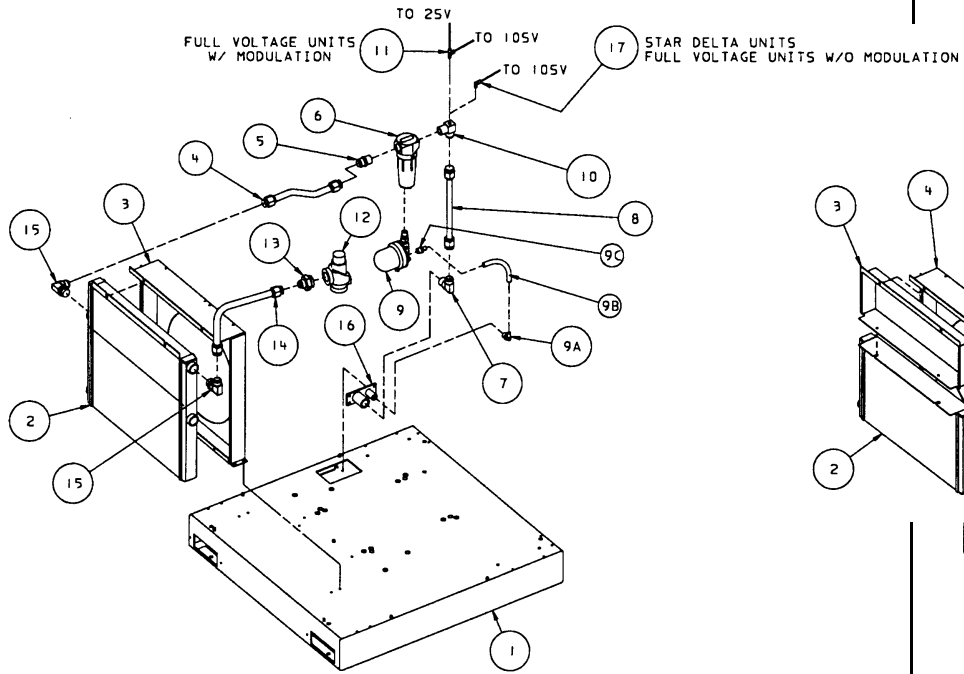


Assembly, Separator Tank

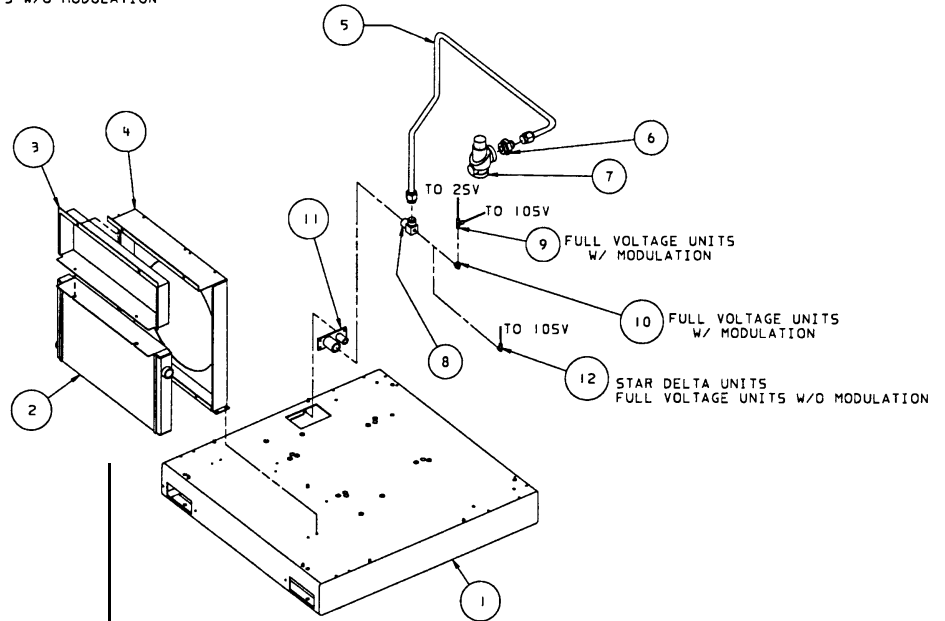
Ref. No.	Part Number	Qty.	Description
1	42427625	1	Tank, Separator (Service Only)
2	39831888	1	Element, Separator
3	39588017	1	Valve, Relief (EP, HP, ML, MM, MH, MU Units)
	39926811	1	Valve, Relief (HXP Units)
4	39156435	2	Connector
5	39124813	xxx	Tubing, .25 Synflex (EP, HP, ML, MM, MU Units)
	39497847	xxx	Tubing, .25 Teflon (HXP, MU Units)
6	39105739	1	Valve, Drain
7	39477526	1	Elbow
8	95938171	1	Elbow
9	39572292	1	Hose, Oil Filter To Manifold
10	39476916	1	Sight Glass
10A	39406996	1	O-Ring
11	39478953	1	Plug, Oil Fill
12	39128673	1	Elbow, Tank Inlet
13	39573670	1	Hose, Airend Discharge
14	95937496	1	Plug
15	39417118	1	Adapter
16	39796594	1	Tube, Scavenge
17	39303219	1	Fitting, Scavenge/Orifice Check Valve
18	39572409	1	Hose, Tank Scavenge
19	95948758	2	Elbow
20	39136932	1	Valve, Blowdown NEMA 1
	39479563	1	Valve, Blowdown NEMA 4
20A	39479555	1	Connector, Din - NEMA 4
22	39476668	1	Tube, Blowdown
23	39475637	1	Valve, Minimum Pressure Check
24	39302088	1	Connector
25	39479944	1	Connector, MPV To Tank
26	39588603	1	Tube, Tank To Aftercooler
27	39572318	1	Hose, Blowdown
28	39479472	1	Elbow
29	39139332	18"	Conduit

XXX ORDER BY THE NUMBER OF INCHES REQUIRED

39866587
REV 06



Standard: Combined Oil/After Cooler



Option: No Aftercooler

Standard: Combined Oil/After Cooler

Ref. No.	Part Number	Qty.	Description
1	39898986	1	Base
2	39837661	1	Cooler, Combination Oil/After
2A	39133152	4	Screw
2B	39128541	2	Nut
2C	95929071	2	Washer, Plated
3	39862776	1	Box, Cooler
3A	39133145	6	Screw
4	39588512	1	Tube, Aftercooler To Moisture Separator
5	95937520	1	Connector
6	39889209	1	Separator, Moisture
7	95937645	1	Elbow
8	39588504	1	Tube, Moisture Separator To Base
9	39586672	1	Trap, Auto Drain
9A	39137534	1	Elbow, Barbed Male
9B	39137518	12"	Tubing
9C	39137542	1	Connector, Barbed Male
10	39304035	1	Elbow, Air Discharge
11	39156351	1	Tee, Male Run
12	39475637	1	Valve, Minimum Pressure Check
13	39302088	1	Connector
14	39588603	1	Tube, Tank To Aftercooler
15	95938171	2	Elbow
16	39323175	1	Plate, Coupling
16A	39133152	4	Screw
17	39155577	1	Elbow

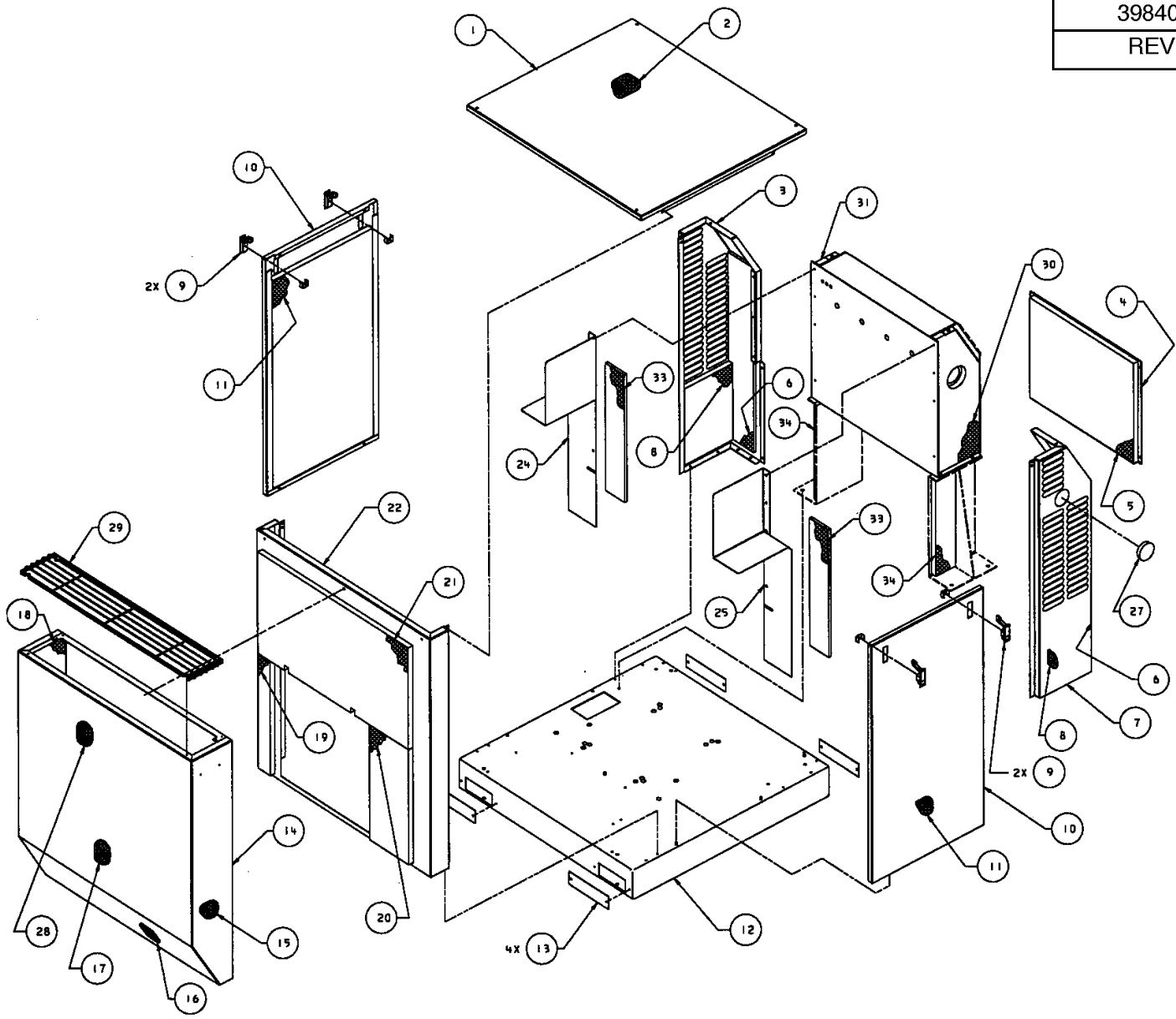
Option: No Aftercooler

Ref. No.	Part Number	Qty.	Description
1	39898986	1	Base
2	39836663	1	Cooler, Oil
2A	39133152	4	Screw
2B	39128541	2	Nut
2C	95929071	2	Washer, Plated
3	39838420	1	Panel, No-Aftercooler
3A	39133145	2	Screw
3B	95929071	2	Washer, Plated
4	39862776	1	Box, Cooler
4A	39133145	4	Screw
5	39903257	1	Tube, Tank To Base
6	39302088	1	Connector
7	39475637	1	Valve, Minimum Pressure Check
8	39302187	1	Elbow, Air-Discharge
9	39156351	1	Tee, Male Run
10	95365599	1	Elbow
11	39323175	1	Plate, Coupling
11A	39133152	4	Screw
12	39155577	1	Elbow

NOTES:

1. STANDARD FASTENERS SUCH AS NUTS, BOLTS, AND SCREWS ARE LISTED AS SUB-ITEMS (EXAMPLE: 3A).
2. REFER TO COMPONENT ASSEMBLY FOR COOLER INSTALLATION.

39840210
REV 05

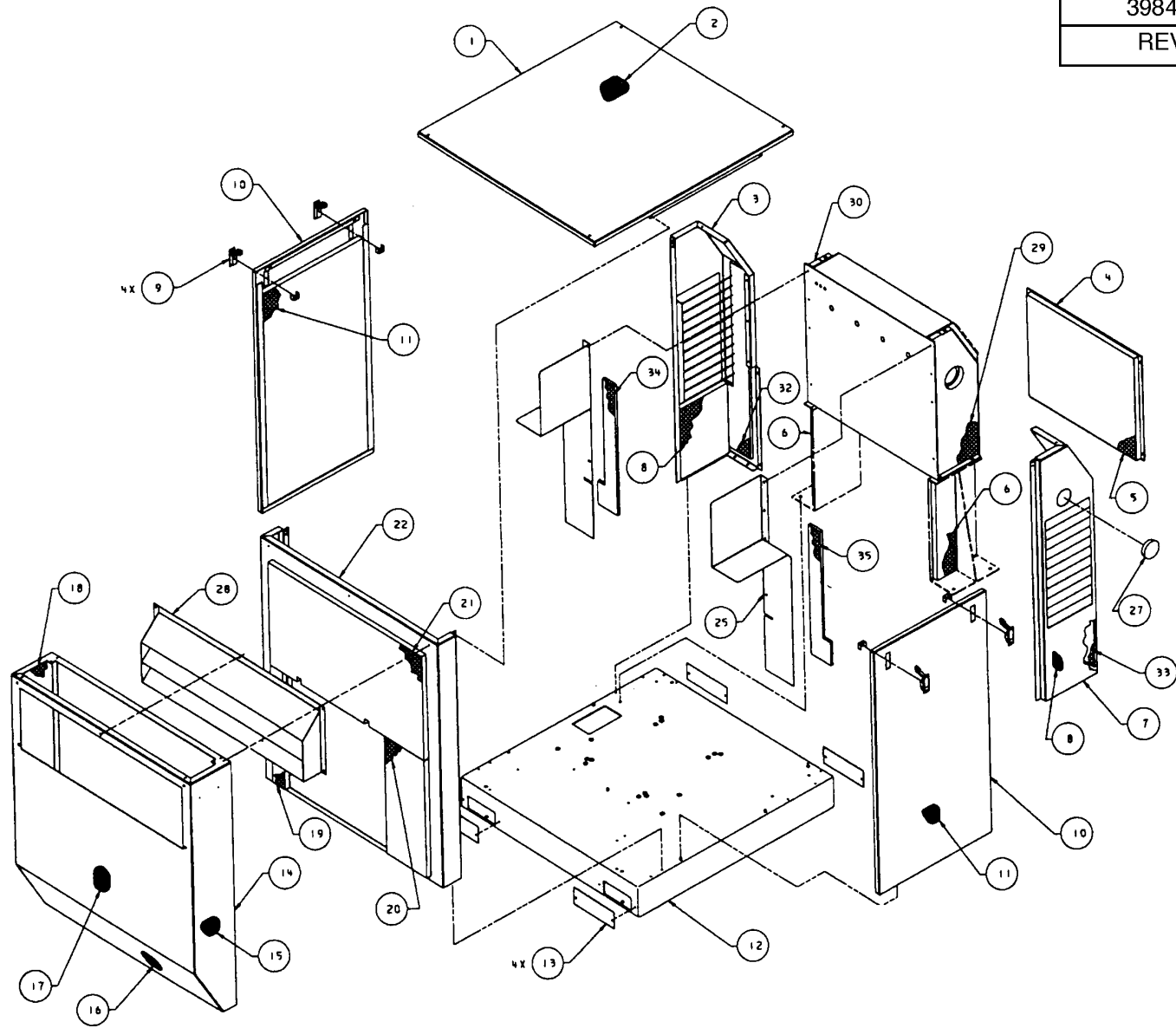


Enclosure Assembly - Standard

Ref. No.	Part Number	Qty.	Description
1	39889696	1	Panel, Top
1A	39125539	6	Screw
2	39843826	1	Foam, Panel-Top
3	39836473	1	Corner, Right
3A	39133145	9	Screw
4	39834957	1	Panel, Front
4A	39133152	4	Screw
5	39836945	1	Foam, Panel-Front
6	39837018	2	Foam, Corner-Front
7	39836465	1	Corner, Left
7A	39133145	9	Screw
8	39837026	2	Foam, Corner-Slide
9	39133954	4	Latch, Door
10	39834338	2	Panel, Common
11	39836952	2	Foam, Panel Common
12	39898986	1	Base
13	39480421	4	Cover, Fork-Lift
13A	39133145	8	Screw
14	39845821	1	Soundbox
14A	39133145	7	Screw
15	39843859	1	Foam, Sbox-Side-Left
16	39837042	1	BafI, Rear-Lower
17	39837034	1	Batt, Rear-Upper
18	39843867	1	Foam, Sbox-Side-Right
19	39836994	1	Foam, Sbox-Plen-Right
20	39836986	1	Foam, Sbox-Plen-Left
21	39836978	1	Foam, Sbox-Plen-Upper
22	39845813	1	Panel, Plenum-Rear
22A	39133145	8	Screw
24	39843974	1	Baffle, Sound-Right
	39844246	1	Baffle, Sound-Right-W/H.D. Filter
24A	39133145	4	Screw
25	39843966	1	Baffle, Sound-Left
	39844352	1	Baffle, Sound-Left-W/No Attercooler
25A	39133145	4	Screw
27	39485818	1	Plug, Plastic
28	39843842	1	Foam, Sbox-Rear
29	39843800	1	Grill, Exhaust
29A	39133145	4	Screw
30	39841440	1	Foam, Starter Left
31	39841457	1	Foam, Starter Right
32	39117312	438"	Gasket, Strip
33	39849310	2	Foam, Baffle
34	39849286	2	Foam, Starter Support

NOTE: 1. STANDARD FASTENERS SUCH AS NUTS, BOLTS, AND SCREWS ARE LISTED AS SUB-ITEMS (EXAMPLE: 1A).

39844790
REV 05



Enclosure Assembly - Outdoor Mod.

Ref. No.	Part Number	Qty.	Description
1	39890207	1	Panel, Top
1A	39125539	6	Screw
2	39836937	1	Foam, Panel-Top
3	39844618	1	Corner, Right
3A	39133145	9	Screw
4	39834957	1	Panel, Front
4A	39133152	4	Screw
5	39836945	1	Foam, Panel-Front
6	39849286	2	Foam, Starter Support
7	39844600	1	Corner, Left
7A	39133145	9	Screw
8	39844758	2	Foam, Corner-Side
9	39133954	4	Latch, Door
10	39844592	2	Panel, Common
11	39836952	2	Foam, Panel, Common
12	39898986	1	Base
13	39480470	4	Cover, Fork Lift
13A	39133145	8	Screw
14	39845466	1	Soundbox, ODM
14A	39133145	3	Screw
15	39843859	1	Foam, SBox-Side-Left
16	39837042	1	Batt, Rear-Lower
17	39837034	1	Batt, Rear-Upper
18	39843867	1	Foam, SBox-Side-Right
19	39636994	1	Foam, SBox-Plen-Right
20	39836986	1	Foam, SBox-Plen-Left
21	39836978	1	Foam, SBox-Plen-Up
22	39845813	1	Endcap, Rear
22A	39133145	8	Screw
24	39843974	1	Baffle, Sound-Right
	39844246	1	Baffle, Sound-Right-W/H.D. Filter
24A	39133145	3	Screw
25	39843966	1	Baffle, Sound-Left
	39844352	1	Baffle, Sound-Left-W/No AC
25A	39133145	3	Screw
27	39485818	1	Plug, Plastic
28	39844584	1	Louver, Exhaust
28A	39133152	5	Screw
29	39841440	1	Foam, Starter Left
30	39841457	1	Foam, Starter Right
31	39117312	438"	Gasket, Strip
32	39849229	1	Foam, Corner Right ODM
33	39849211	1	Foam, Corner Left ODM
34	39849302	1	Foam, Baffle Right ODM
35	39849294	1	Foam, Baffle Left ODM

NOTE:

1. STANDARD FASTENERS SUCH AS NUTS, BOLTS, AND SCREWS ARE LISTED AS SUB-ITEMS (EXAMPLE: 1A).

O-RINGS FOR SAE FITTINGS

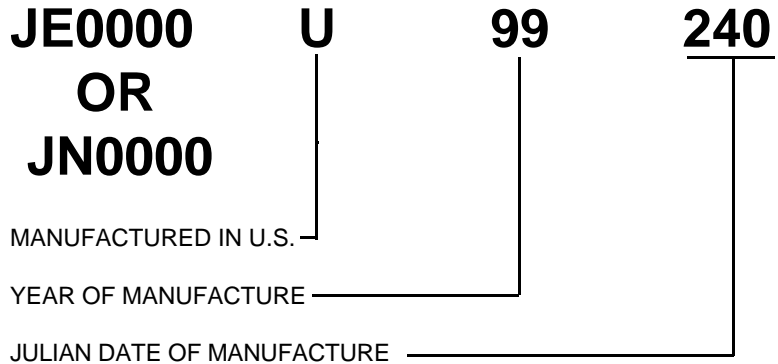
Part No.	Size/ Thread	ID	Width	Tube Size
39404157	7/16-20	0.351	0.072	1/4
39404132	9/16-18	0.468	0.078	3/8
39404165	3/4-16	0.644	0.087	1/2
39437074	7/8-14	0.755	0.097	5/8
39407531	1- 1/16-12	0.924	0.116	3/4
39404173	1- 5/16-12	1.171	0.116	1
39404140	1- 5/8-12	1.475	0.118	1-1/4
39406996	1- 7/8-12	1.720	0.118	1-1/2
39410279	2- 1/2-12	2.337	0.118	2

RECOMMENDED SPARE PARTS LIST

HOWTO ORDER PARTS

In order that all avoidable errors be eliminated when ordering parts, please specify the following:

- 1.The model number of the unit as shown on the Compressor Data Plate.
- 2.The serial number of the unit as shown on the Compressor Data Plate.
- 3.The form number of this manual.
- 4.The reference number, part number, description and quantity needed exactly as listed.
- 5.The motor data code shown on the motor data plate.



SPECIAL NOTE

THE INGERSOLL-RAND AIREND MODULE IS ENGINEERED AND MANUFACTURED TO THE HIGHEST QUALITY STANDARDS. WITH REGULAR MAINTENANCE YOUR AIR COMPRESSOR SYSTEM WILL PROVIDE MANY YEARS OF TROUBLE FREE CONTINUOUS SERVICE.

THE INGERSOLL-RAND AIREND IS BACKED BY A FACTORY WARRANTED AIREND REBUILD-EXCHANGE PROGRAM.

CONTACT YOUR NEAREST INGERSOLL-RAND REPRESENTATIVE FOR DETAILED INFORMATION.

Recommended Spare Parts

Compressor Part	Part No.	Qty. Per Unit	Location or Use
Maintenance Kit	***	0	Maintenance Kit with Ultra Coolant
Ultra Coolant (5 Gal/19Ltr.Container)	39433735	1	Fill 3.2 Gallons (12.1 Litres)
Air Filter	39588470	1	Inlet Valve
Coolant Filter Element	39907175	1	On Thermo Valve/Oil Filter Housing
Separator Element	39831888	1	In Separator Tank
Thermostatic Control Valve Element	39441944	1	In Thermostatic Control Valve Housing
Blowdown Solenoid Valve (NEMA 1)	39136932	1	On Top of Tank (3SV)
Blowdown Solenoid Valve (NEMA 4)	39479563	1	On Top of Tank (3SV)
High Air Temperature Switch	39419668	1	In Airend (1ATS)
O-Ring	39404165	1	On HATS
Inlet Valve (Full Voltage Units)	39897509	1	On Inlet Plate
Kit, Inlet Valve Service (Full Voltage Units)	92990100	1	
Inlet Valve (Star-Delta Units)	39840418	1	On IntakeTube
Kit, Inlet Valve Rebuild (Star-Delta Units)	42385948	1	
Minimum Pressure Check Valve	39475637	1	Tank Discharge Line
Relief Valve	39588017	1	On Separator Tank (EP, HP, ML, MM, MH, MU)
Relief Valve	39926811	1	On Separator Tank (HXP Units)
Fuse (1.8A)	39178710	2	In Starter Box
Fuse (2.0A)	39113535	1	In Starter Box
Fuse (2.5A)	39178728	2	In Starter Box, B110 & B180 Only
Fuse (3.2A)	39113527	1	In Starter Box, B110 & B180 Only
Fuse (2.0A)	39113535	2	In Starter Box, (4FU/5FU)
* Coil	39251319	**	In C23, C30, C37 Contactors
* Coil	39251327	**	In C43 Contactor
* Coil	39251335	**	In C60, C72, C85 Contactors
* Coil	39251350	**	In B110 Contactor
Contact Kit (3 Poles)	39251392	**	In B110 Contactor
* Coil	39251368	**	In B180 Contactor
Contact Kit (3 Poles)	39251400	**	In B180 Contactor
Panel Locator Pins	39138490	6	In Base For Panels
Power On Light	39196225	1	In Starter Box
Emergency Stop Switch	92823541	1	On Intellisys Panel
Pressure Sensor (0-250PSIG/0-17 Bar)	39853791	1	In Line/Sump Solenoid Valve (3APT)
Temperature Sensor	39586227	1	In Airend (2ATT)
Intellisys Controller (English)	39817655	1	Starter Box (English)
Intellisys Controller (Spanish/Portuguese)	39830906	1	Starter Box (Spanish/Portuguese)
Decal Kit (English)	39825500	1	All Units (English)
Decal Kit (Spanish)	39830880	1	All Units (Spanish)
Gasket, Inlet Valve	39496591	2	Under Inlet Valve
Gasket, Inlet Adapter	39494794	2	Under Inlet Adapter Plate or IntakeTube
Shaft Seal Kit	42412205	1	In Airend
Belt, 60"	39158324	3	EP30/HP30
Belt, 63"	39158340	3	HXP30, ML22, MM22, MH22, MU22
Belt, 60"	39158324	4	EP40/HP40
Belt, 63"	39158340	4	HXP40, ML30, MM30, MH30, MU30
Unload Solenoid Valve (NEMA 1)	39583943	1	On Starter Box (1SV- Full Voltage Only)
Unload Solenoid Valve (NEMA 4)	39497672	1	On Starter Box (1SV- Full Voltage Only)
Unload Solenoid Valve (NEMA 1)	39418926	1	On Starter Box (1SV-Star-Delta Only)
Unload Solenoid Valve (NEMA 4)	39146741	1	On Starter Box (1SV-Star-Delta Only)
Modulate Solenoid Valve (NEMA 1)	39530852	1	On Starter Box (2SV)
Modulate Solenoid Valve (NEMA 4)	39497680	1	On Starter Box (2SV)
Modulate Solenoid Valve (NEMA 1)	39583943	1	On Starter Box (6SV-Star-Delta Only)
Modulate Solenoid Valve (NEMA 4)	39497672	1	On Starter Box (6SV-Star-Delta Only)
Line/Sump Solenoid Valve (NEMA 1)	39583943	1	On Starter Box (10SV)
Line/Sump Solenoid Valve (NEMA 4)	39497672	1	On Starter Box (10SV)
Shuttle Valve	39127261	1	Regulator Valve or 6SV
Regulation Valve	39152442	1	EP/ HP Units (Full Voltage)
Regulation Valve	39197595	1	HXP Units (Full Voltage)
Regulation Valve	39199476	1	EP/HP/ML/MM/MH Units (Star-Delta)
Regulation Valve	39199484	1	HXP/MU Units (Star-Delta)
Hose	39573670	1	Airend ToTank
Hose	39572011	1	Oil Filter To Manifold
Hose	39572292	1	Tank ToThermo Valve
Hose	39572409	1	Separator Scavenge
Hose	39572318	1	Blowdown ValveTo Inlet Valve
Fan, 18" (457MM)	39836069	1	30/40HP Units
Fan, 18" (457MM)	39853973	1	22/30KW Units

* Good for Both 50 & 60 Hz
 ** Quantity (1) For AAL Starters
 *** Contact Your I-R Distributor or Air Center