

Parts Manual

SULLAIR® COMPRESSOR

Series 12 40, 50, 60 HP Standard & 24KT
Series 16 60 and 75 HP Standard & 24KT
Industrial Rotary Screw Air Compressor

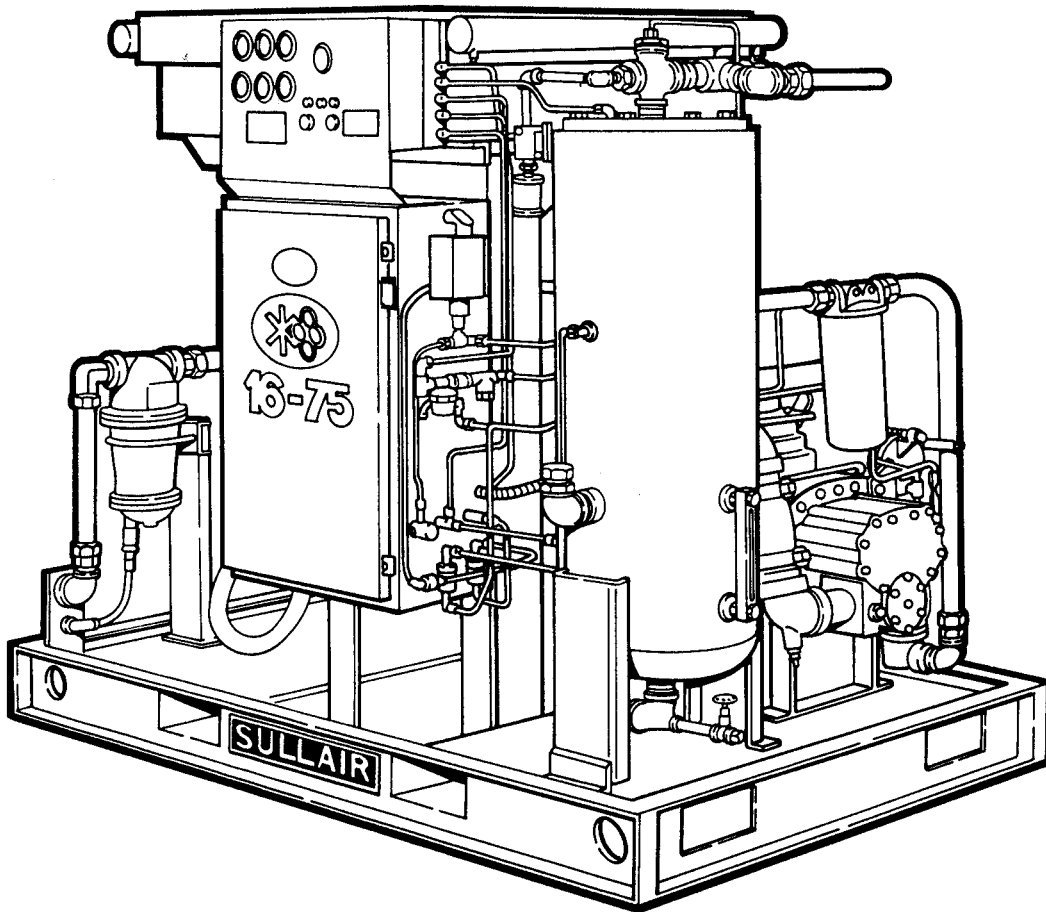


TABLE OF CONTENTS

Section 1 ILLUSTRATIONS AND PARTS LIST

PAGE	
1	1.1 PROCEDURE FOR ORDERING PARTS
1	1.2 RECOMMENDED SPARE PARTS LIST
2	1.3 MOTOR, FRAME, COMPRESSOR AND PARTS (12 SERIES)
6	1.4 MOTOR, FRAME, COMPRESSOR AND PARTS (16 SERIES)
8	1.5 AIR INLET SYSTEM (12 AND 16 SERIES)
10	1.6 COMPRESSOR COOLING AND LUBRICATION SYSTEM (AIR-COOLED, 12 SERIES, 40 AND 50HP)
14	1.7 COMPRESSOR COOLING AND LUBRICATION SYSTEM WATER-COOLED, 12 SERIES)
18	1.8 COMPRESSOR COOLING AND LUBRICATION SYSTEM (AIR-COOLED, 12 SERIES, 60HP AND 16 SERIES, 60/75HP)
22	1.9 COMPRESSOR COOLING AND LUBRICATION SYSTEM (WATER-COOLED, 12 SERIES, 60HP AND 16 SERIES 60/75HP)
28	1.10 COMPRESSOR DISCHARGE SYSTEM (12 AND 16 SERIES)
34	1.11 AIR-COOLED COOLING SYSTEM (12 AND 16 SERIES)
36	1.12 CAPACITY CONTROL SYSTEM (12 AND 16 SERIES)
40	1.13 INSTRUMENT PANEL AND PARTS (12 AND 16 SERIES)
42	1.14 ELECTRO-PNEUMATIC CONTROL SYSTEM (12 AND 16 SERIES)
44	1.15 ELECTRIC CONTROL BOX ASSEMBLY (12 AND 16 SERIES)
48	1.16 CANOPY ENCLOSURE AND PARTS (12 AND 16 SERIES)
52	1.17 DECAL GROUP

BILLS OF MATERIAL

12 SERIES STANDARD

DESCRIPTION	<u>12LB-40</u>	<u>12B-50</u>	<u>12B-60</u>
	L:190 CFM H:175 CFM	L:235 CFM H:215 CFM	H:260 CFM
"L" Air-cooled	251661-002	251663-002	
"H" Air-cooled	251662-002	251664-002	251665-002
"L" Water-cooled	251666-002	251668-002	
"H" Water-cooled	251667-002	251669-002	251670-002

12 SERIES 24KT

DESCRIPTION	<u>12LB-40</u>	<u>12B-50</u>	<u>12B-60</u>
	L:190 CFM H:175 CFM	L:235 CFM H:215 CFM	H:260 CFM
"L" Air-cooled	251671-001	251673-001	251675-001
"H" Air-cooled	251672-001	251674-001	
"L" Water-cooled	251676-001	251678-001	
"H" Water-cooled	251677-001	251679-001	251680-001

16 SERIES STANDARD

DESCRIPTION	<u>16B-60</u>	<u>16B-75</u>
	L:300 CFM H:280 CFM	L:370 CFM H:330 CFM
"L" Air-cooled	251681-002	251683-002
"H" Air-cooled	251682-002	251684-002
"L" Water-cooled	251685-002	251687-002
"H" Water-cooled	251686-002	251688-002

16 SERIES 24KT

DESCRIPTION	<u>16B-60</u>	<u>16B-75</u>
	L:300 CFM H:280 CFM	L:370 CFM H:330 CFM
"L" Air-cooled	251689-001	251691-001
"H" Air-cooled	251690-001	251692-001
"L" Water-cooled	251693-001	251695-001
"H" Water-cooled	251694-001	251696-001

Section 1 ILLUSTRATIONS AND PARTS LIST

1.1 PROCEDURE FOR ORDERING PARTS

Parts should be ordered from the nearest Sullair Representative or the Representative from whom the compressor was purchased. If for any reason parts cannot be obtained in this manner, contact the factory directly at the address below.

When ordering parts always indicate the **Serial Number** of the compressor. This can be obtained from the Bill of Lading for the compressor or from the Serial Number Plate located on the compressor.

Standard fasteners (capscrews, nuts, washers, etc.) tubing and fittings plus other standard hardware have not been included in the Parts List. Standard Pipe is Schedule 40 and fittings are 150# malleable. These are items which can be obtained quicker and more economically from local sources.

SULLAIR CORPORATION

Subsidiary of Sundstrand Corporation
3700 East Michigan Boulevard
Michigan City, Indiana 46360

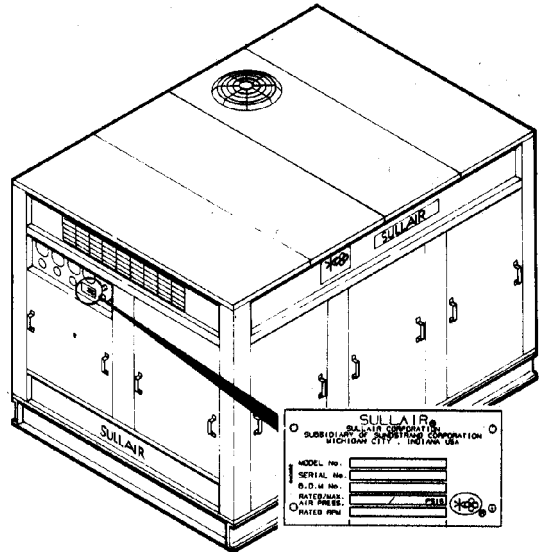
Telephone: (219) 879-5451
FAX: (219) 874-1273
See Toll-free numbers below.

SULLAIR CORPORATION

Parts Distribution Division and Service Department
1625 E. Second Street
Michigan City, Indiana 46360

Telephone: (219) 879-5451 or
1-800-348-2722 (U.S. except Indiana)
1-800-225-6226 (Indiana)
1-800-525-5506 (Canada)

Telex: 4320147
FAX: (219) 874-1835 (Parts)
FAX: (219) 874-1805 (Service)

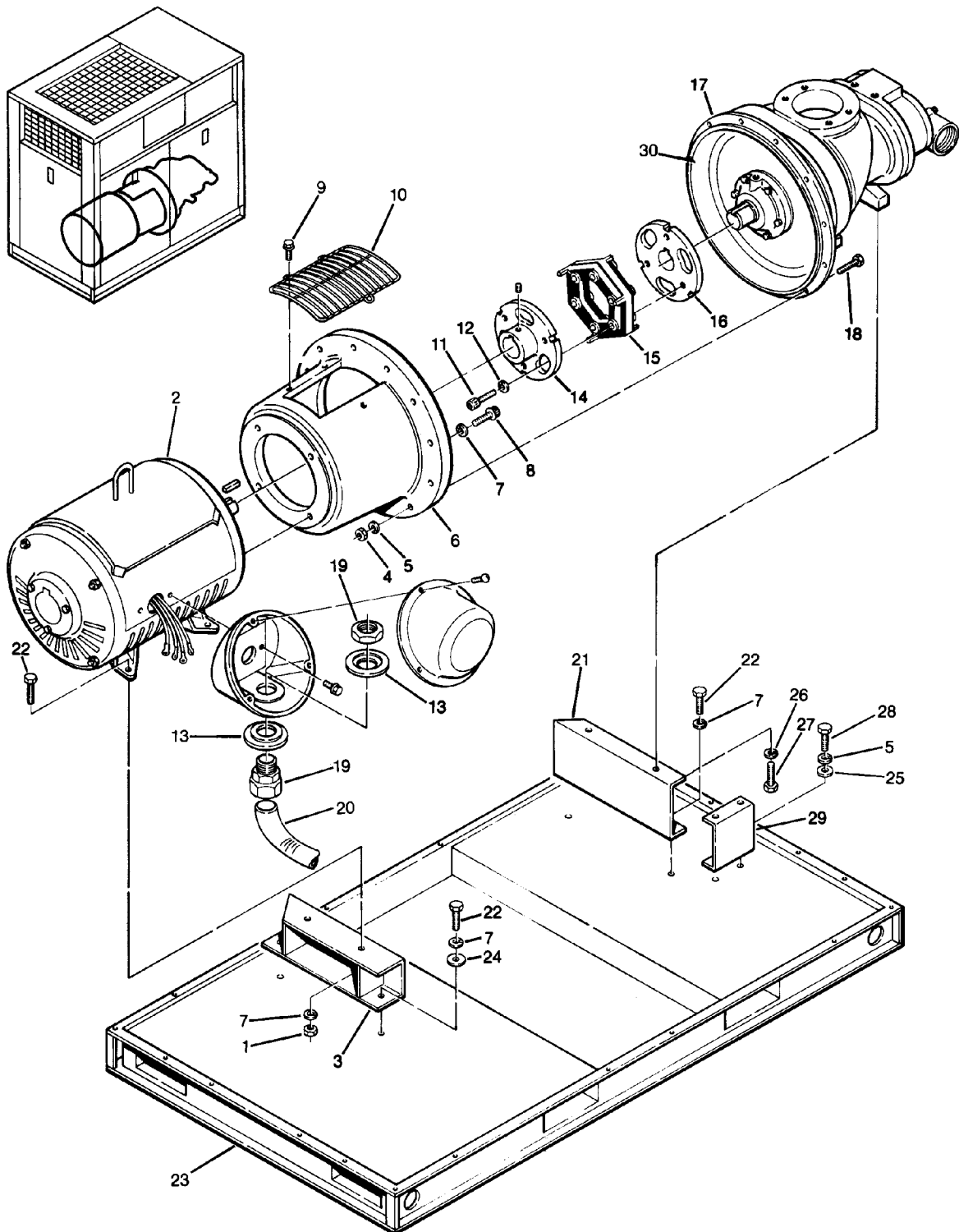


1.2 RECOMMENDED SPARE PARTS LIST

DESCRIPTION	KIT NUMBER	QUANTITY
element for compressor fluid filter 250025-522	250025-526	1
element for standard air filter 250020-315	040899	1
element for heavy duty primary air filter 049103 (12 Series)	049301	1
element for heavy duty safety air filter 047274 (16 Series)	047542 (primary)	1
element for heavy duty safety air filter 047274 (16 Series)	047543 (secondary)	1
primary element for separator 408167-001	250034-116	1
secondary element for separator 250034-115	408167-011	1
repair kit for minimum pressure/check valve 241581 (12 Series)	250026-758	1
repair kit for minimum pressure/check valve 250016-618 (16 Series)	250019-444	1
repair kit for thermal valve 014512	001168	1
repair kit for fluid stop valve 016741	001684	1
repair kit for pressure regulator 406929	041742	1
repair kit for blowdown valve 044912	046782	1
repair kit for pilot valve 250017-993	250018-970	1
replacement kit for pilot valve coil 250017-993	250018-971	1
repair kit for Flexmaster gasket 040648 (std. only)	040649	1
repair kit for Flexmaster gasket 250007-563 (24KT only)	250007-564	1
Sullicon spring	250006-526	1
replacement kit for Sullicon Control 250026-010 (12 Series)	250020-353	1
replacement kit for Sullicon Control 250026-011 (16 Series)	250020-353	1
repair kit for v-type strainer 241771	241772	1
repair kit for shaft seal (12 Series)	602540-002	1
repair kit for shaft seal (16 Series)	602541-002	1

Section 1 ILLUSTRATIONS AND PARTS LIST

1.3 MOTOR, FRAME, COMPRESSOR AND PARTS (12 SERIES)



Section 1 ILLUSTRATIONS AND PARTS LIST

1.3 MOTOR, FRAME, COMPRESSOR AND PARTS (12 SERIES)

<i>key number</i>	<i>description</i>	<i>part number</i>	<i>quantity</i>
1	nut, hex $\frac{5}{8}$ "	824210-559	2
2	motor, 40HP (230/460V) • motor, 50HP (230/460V) • motor, 60HP (230/460V)	250016-692 250016-693 250016-694	1 1 1
3	support, motor (60HP) • support, motor (40 and 50HP)	250018-536 250017-490	1 1
4	nut, hex $\frac{3}{8}$ "-16	824206-337	12
5	washer, springlock $\frac{3}{8}$ "	837506-094	14
6	adapter, motor/compressor	250014-882	1
7	washer, springlock $\frac{5}{8}$ "	837510-156	10
8	capscrew, ferry $\frac{5}{8}$ "-11 x $1\frac{1}{2}$ "	828410-150	4
9	screw, hex serrated washer $\frac{5}{16}$ " x $\frac{3}{4}$ "	829705-075	3
10	guard, coupling	250018-412	1
11	capscrew, ferry $\frac{1}{2}$ "-13 x $2\frac{1}{2}$ " (40 & 50HP) • capscrew, ferry $\frac{5}{8}$ "-11 x $2\frac{3}{4}$ " (60HP)	828408-250 828410-275	6 6
12	washer, springlock $\frac{1}{2}$ " (40 and 50HP) • washer, springlock $\frac{5}{8}$ " (60HP)	837508-125 837510-156	6 6
13	washer, conduit reducing 3" x $1\frac{1}{2}$ "	847012-060	2
14	hub, coupling (40 and 50HP) • hub, coupling (60HP)	250018-005 250018-008	1 1
15	element, coupling (40 and 50HP) • element, coupling (60HP)	250004-641 250018-551	1 1
16	hub, coupling (40 and 50HP) • hub, coupling (60HP)	250004-642 250018-006	1 1
17	compressor unit (I)	Consult the Factory	1
18	capscrew, hex $\frac{3}{8}$ "-16 x $2\frac{1}{4}$ "	828606-225	12
19	grip, cord	250014-557	1
20	wire, type g-gc 4 ga (ft.)	250014-306	4
21	support, compressor	250017-489	1
22	capscrew, hex $\frac{5}{8}$ "-11 x $1\frac{1}{4}$ "	828610-125	6
23	frame, main	250015-817	1

(continued on Page 5)

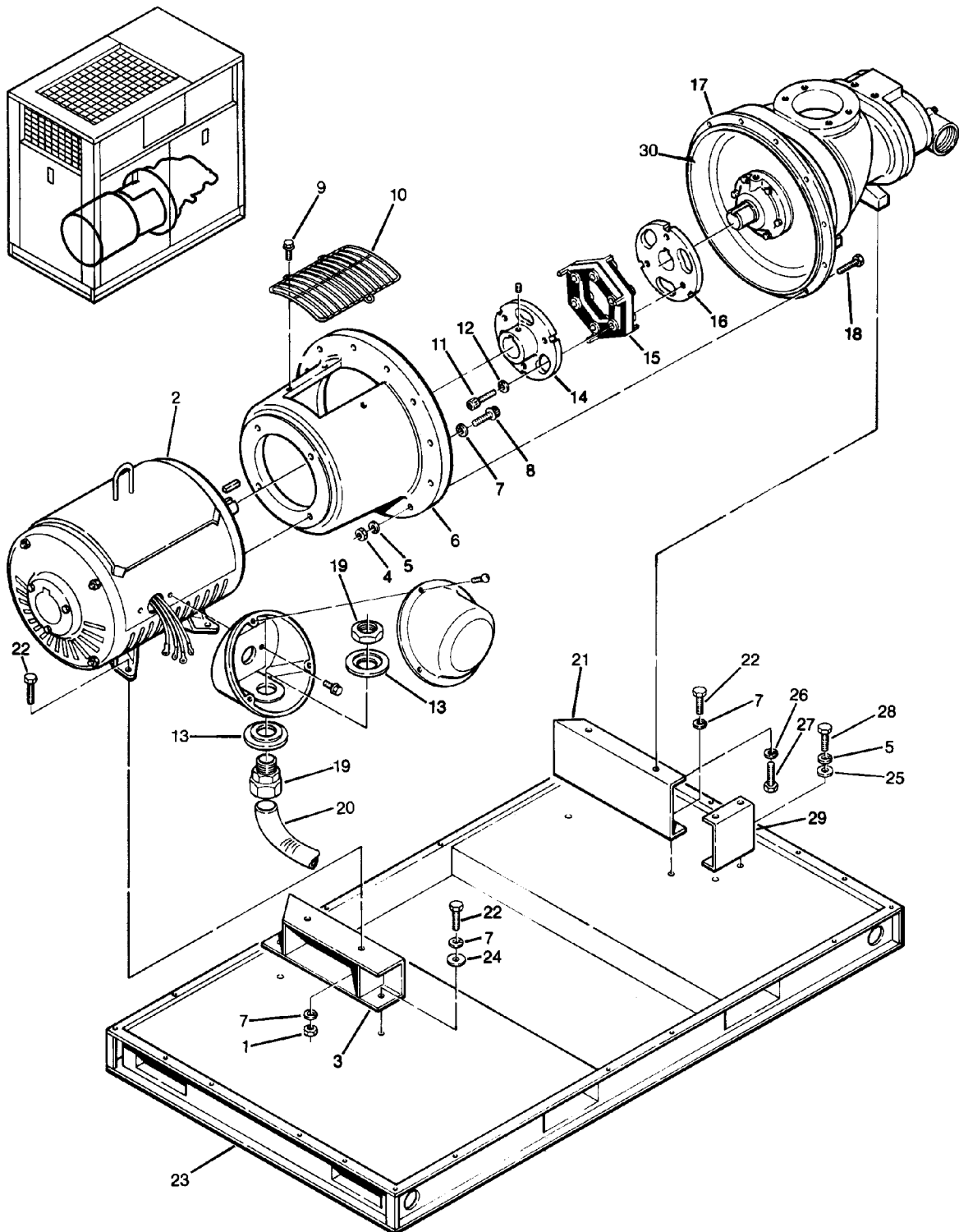
(I) There is an exchange program whereby a remanufactured compressor unit can be obtained from Sullair distributors or the factory at less cost than the owner could repair the unit. For information regarding the unit exchange program, contact your nearest Sullair representative or the Sullair Corporation.

The shaft seal is not considered part of the compressor unit in regard to the 2 year warranty, but the normal Sullair parts warranty applies. For shaft seal repairs, order shaft seal repair kit No. 602540-002.

PLEASE NOTE: WHEN ORDERING PARTS, INDICATE SERIAL NUMBER OF COMPRESSOR

Section 1 ILLUSTRATIONS AND PARTS LIST

1.3 MOTOR, FRAME, COMPRESSOR AND PARTS (12 SERIES)



Section 1
ILLUSTRATIONS AND PARTS LIST

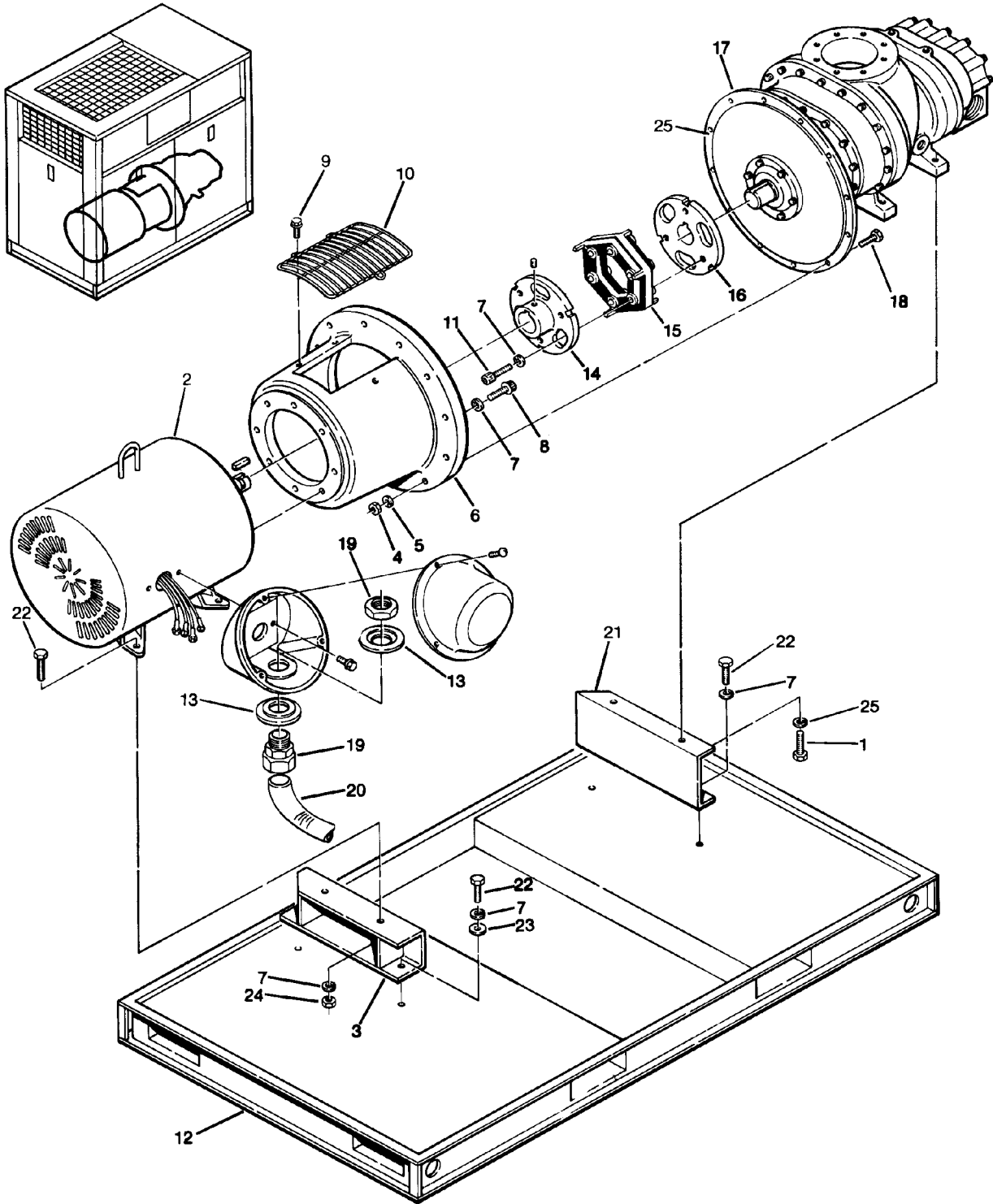
1.3 MOTOR, FRAME, COMPRESSOR AND PARTS (12 SERIES) (continued)

<i>key number</i>	<i>description</i>	<i>part number</i>	<i>quantity</i>
24	washer, pl-b regular unfinished $\frac{5}{8}$ "	837210-112	2
25	washer, pl-b regular unfinished $\frac{3}{8}$ "	837206-071	2
26	washer, springlock regular $\frac{1}{2}$ "	837508-125	8
27	capscrew, hex $\frac{1}{2}$ "-13 x $1\frac{1}{2}$ "	828608-150	2
28	capscrew, $\frac{3}{8}$ " x 1"	828606-100	2
29	bracket, discharge piping	250018-433	1
30	adapter, SAE flange	250016-605	1

PLEASE NOTE: WHEN ORDERING PARTS, INDICATE SERIAL NUMBER OF COMPRESSOR

Section 1 ILLUSTRATIONS AND PARTS LIST

1.4 MOTOR, FRAME, COMPRESSOR AND PARTS (16 SERIES)



Section 1 ILLUSTRATIONS AND PARTS LIST

1.4 MOTOR, FRAME, COMPRESSOR AND PARTS (16 SERIES)

<i>key number</i>	<i>description</i>	<i>part number</i>	<i>quantity</i>
1	capscrew, hex 1/2" – 13 x 1 1/2"	828608 – 150	2
2	motor, 60HP (230/460V) • motor, 75HP (230/460V)	250016 – 694 250016 – 695	1 1
3	support, motor	250017 – 492	1
4	nut, hex 3/8" – 16	824206 – 337	12
5	washer, springlock 3/8"	837506 – 094	12
6	adapter, motor/compressor	250014 – 883	1
7	washer, springlock 5/8"	837510 – 156	24
8	capscrew, ferry 5/8" – 11 x 1 1/2"	828410 – 150	8
9	screw, hex serrated washer	829705 – 075	3
10	guard, coupling	250018 – 412	1
11	capscrew, ferry 5/8" – 11 x 2 3/4"	828410 – 275	6
12	frame, main	250015 – 817	1
13	washer, conduit reducing 3" x 1 1/2"	847012 – 060	2
14	hub, coupling	250018 – 006	1
15	element, coupling (less hardware)	250018 – 551	1
16	hub, coupling	250018 – 007	1
17	compressor unit (I)	Consult the Factory	1
18	capscrew, hex 3/8" – 16 x 2 1/4"	828606 – 225	12
19	grip, cord #2 (75HP) • grip, cord #2 (60HP)	250014 – 559 250014 – 557	2 2
20	wire, type g – gc (75HP) (ft.) • wire, type g – gc (60HP) (ft.)	250014 – 308 250014 – 306	4 4
21	support, compressor	250017 – 491	1
22	capscrew, hex 5/8" – 11 x 1 1/4"	828610 – 125	6
23	washer, 5/8"	837210 – 112	2
24	nut, hex 5/8" – 11	824210 – 559	2
25	adapter, SAE flange	250016 – 611	1

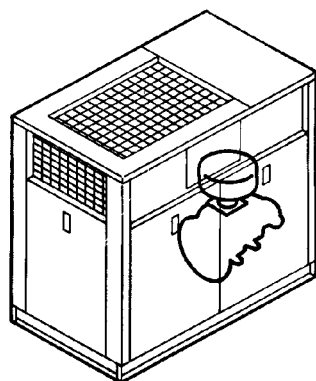
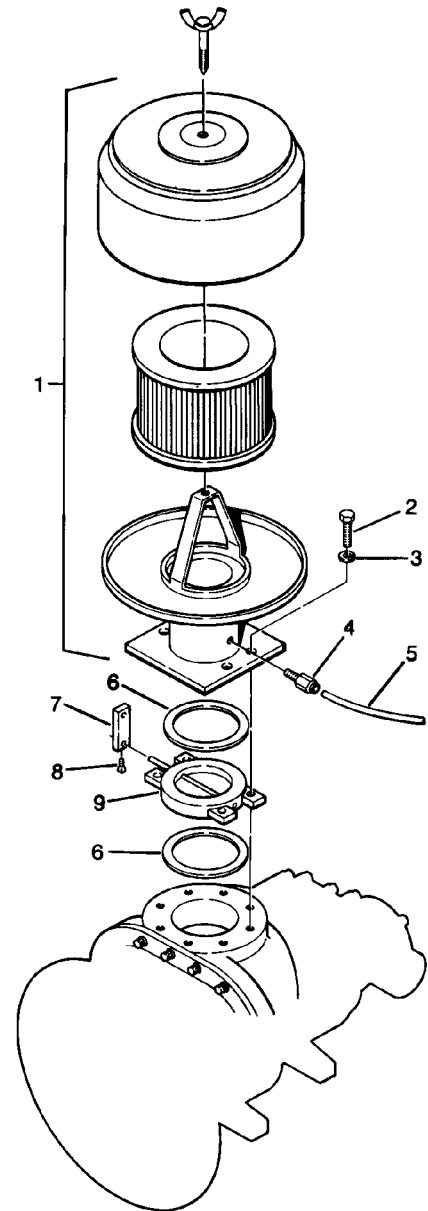
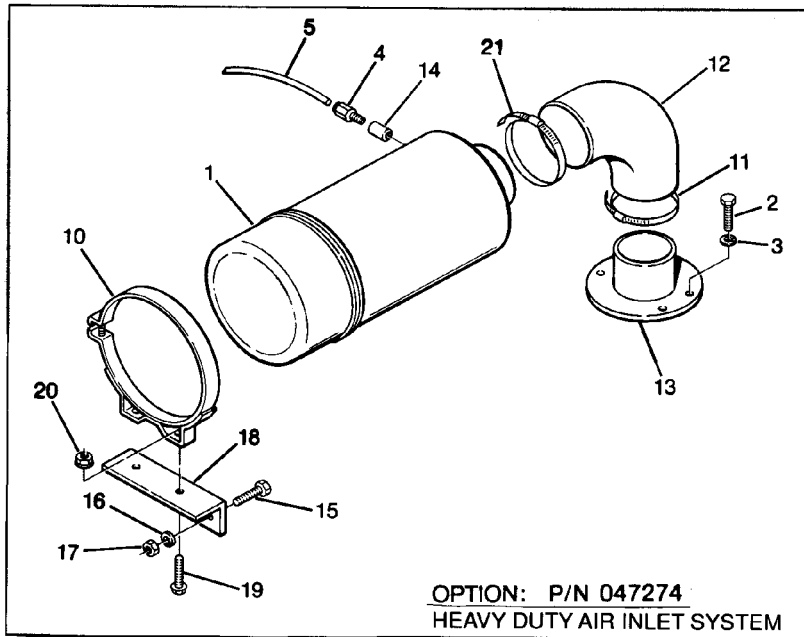
(I) There is an exchange program whereby a remanufactured compressor unit can be obtained from Sullair distributors or the factory at less cost than the owner could repair the unit. For information regarding the unit exchange program, contact your nearest Sullair representative or the Sullair Corporation.

The shaft seal is not considered part of the compressor unit in regard to the 2 year warranty, but the normal Sullair parts warranty applies. For shaft seal repairs, order shaft seal repair kit No. 602541 – 002

PLEASE NOTE: WHEN ORDERING PARTS, INDICATE SERIAL NUMBER OF COMPRESSOR

Section 1
ILLUSTRATIONS AND PARTS LIST

1.5 AIR INLET SYSTEM (12 AND 16 SERIES)



Section 1 ILLUSTRATIONS AND PARTS LIST

1.5 AIR INLET SYSTEM (12 AND 16 SERIES)

<i>key number</i>	<i>description</i>	<i>part number</i>	<i>quantity</i>
1	filter, assembly air (with flanged base) (I) • filter, assembly air (12 Series) (II) • filter, assembly air (16 Series) (III)	250020–315 049103 047274	1 1 1
2	capscrew, hex ½" – 13 x 2½"	828608–250	4
3	washer, springlock ½"	837508–125	4
4	connector, tube–straight ⅛"npt x ¼"t	813604–125	1
5	tubing, thermoplastic ¼"od (ft.)	250024–745	7
6	gasket, ⅜" x 5¼"od x 4⅛"id	040708	2
7	lever, inlet valve	020687	1
8	screw, set ⅝" – 18 x ¾"	408383	1
9	valve, butterfly 4"	040640	1
10	band, air filter mounting (12 Series) • band, air filter mounting (16 Series)	049104 040194	1 1
11	clamp, hose	040642	1
12	elbow, 90° rubber (12 Series) • elbow, 90° rubber (16 Series)	040550 047275	1 1
13	adapter, compressor inlet assy (12 Series) • adapter, compressor inlet assy (16 Series)	250021–230 011168	1 1
14	coupling, pipe ⅛" galvanized	803215–005	1
15	capscrew, hex ⅜" – 16 x 2½"	828606–250	2
16	washer, springlock ⅜"	837506–094	2
17	nut, hex ⅜" – 16	824206–337	2
18	angle, filter support	250019–508	1
19	screw, hex serrated washer ⅝" x ¾"	829705–075	2
20	nut, hex flanged plated ⅝" – 18	825305–283	2
21	clamp, hose (12 Series) • clamp, hose (16 Series)	040642 408153	1 1

(I) For maintenance on air filter assembly no. 250020–315, order element no. 040899.

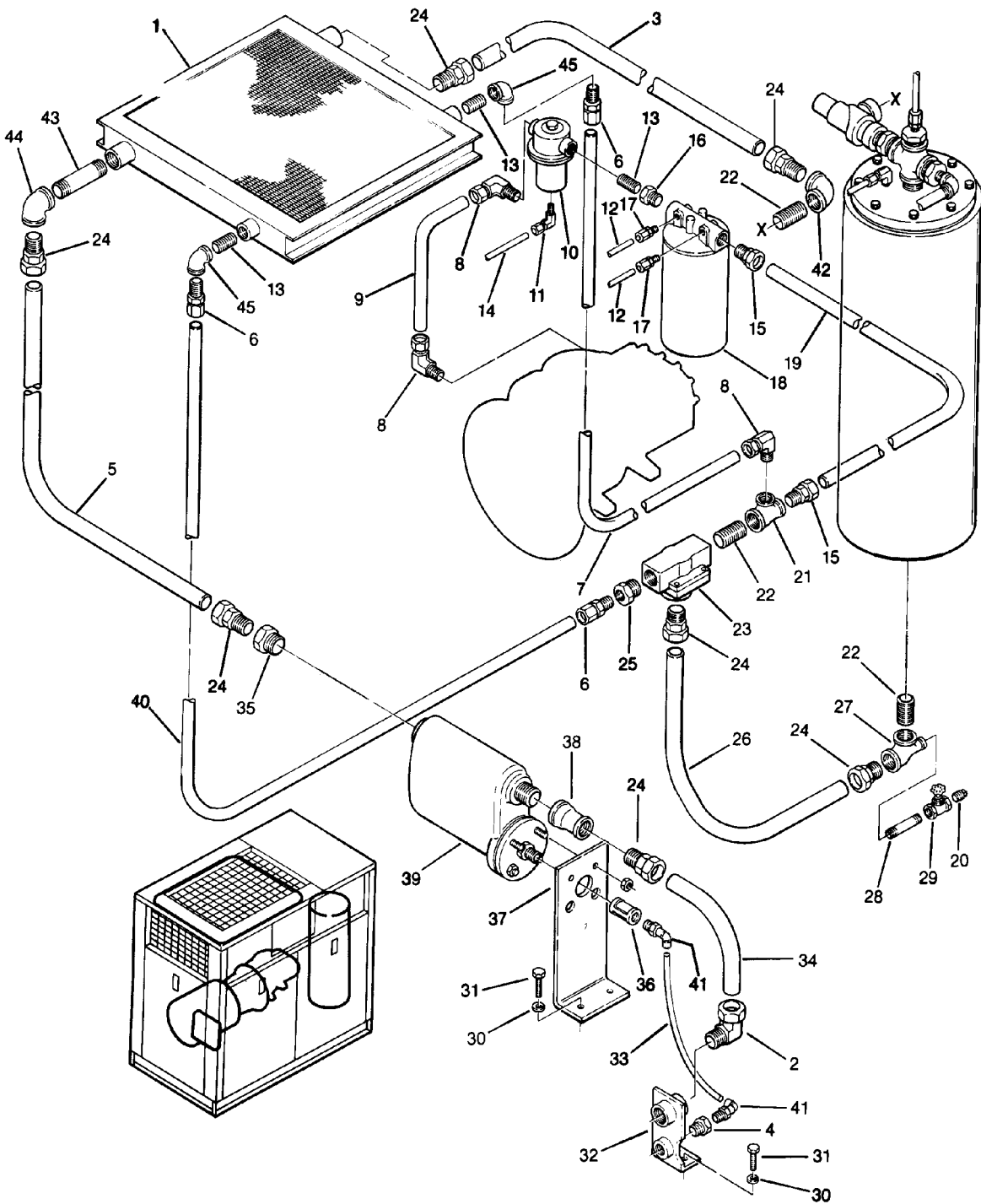
(II) For maintenance on air filter assembly no. 049103, order element no. 049301.

(III) For maintenance on air filter assembly no. 047274, order primary element no. 047542 and safety element no. 047543.

PLEASE NOTE: WHEN ORDERING PARTS, INDICATE SERIAL NUMBER OF COMPRESSOR

Section 1
ILLUSTRATIONS AND PARTS LIST

1.6 COMPRESSOR COOLING AND LUBRICATION SYSTEM (AIR-COOLED, 12 SERIES, 40 AND 50HP)



Section 1 ILLUSTRATIONS AND PARTS LIST

1.6 COMPRESSOR COOLING AND LUBRICATION SYSTEM (AIR-COOLED, 12 SERIES, 40 AND 50HP)

<i>key number</i>	<i>description</i>	<i>part number</i>	<i>quantity</i>
1	cooler, fluid and aftercooler assembly	250038-657	1
2	elbow, tube-m 1 1/2" x 1 1/2"	810524-150	1
3	tube, 1 1/2"	250018-259	1
4	bushing, reducing 3/4" x 1/2"	802103-020	1
5	tube, 1 1/2"od	250018-251	1
6	connector, tube 1" x 1"	810216-100	4
7	tube, 1"	250018-258	1
8	elbow, tube 1" x 1"	810516-100	3
9	tube, 1"	250038-497	1
10	valve, fluid stop 1" (I)	016741	1
11	elbow, tube 5/16" x 1/4"	810505-025	1
12	tubing, 1/4" (ft.)	841015-004	10
13	nipple, pipe 1" x close	822216-000	3
14	tubing, 5/16" stainless steel (ft.)	841215-005	2.7
15	connector, tube-m 1 1/4" x 1 1/4"	810220-125	2
16	bushing, reducing 1 1/4" x 1"	802105-040	1
17	connector, tube-m 1/4" x 1/4"	810204-025	2
18	filter, fluid (II)	250025-522	1
19	tube, 1 1/4"	250018-246	1
20	plug, pipe 1/2"	807800-020	1
21	tee, reducing 1 1/2" x 1 1/4" x 1"	802206-054	1
22	nipple, pipe 1 1/2" x close	822224-000	2
23	valve, thermal (III)	014512	1
24	connector, tube-m 1 1/2" x 1 1/2"	810224-150	7
25	bushing, reducing 1 1/2" x 1"	802106-040	1
26	tube, 1 1/2"	250018-376	1
27	tee, reducing 1 1/2" x 1/2" x 1 1/2"	802206-026	1
28	nipple, pipe 1/2" x 4"	822108-040	1
29	valve, globe 1/2"	041007	1
30	washer, springlock 1/2"	837508-125	3
31	capscrew, hex 1/2" - 13 gr5	828608-150	3
32	bracket, air connector and condenser drain	250017-233	1

(continued on Page 13)

(I) For maintenance on fluid stop valve no. 016741, order repair kit no. 001684.

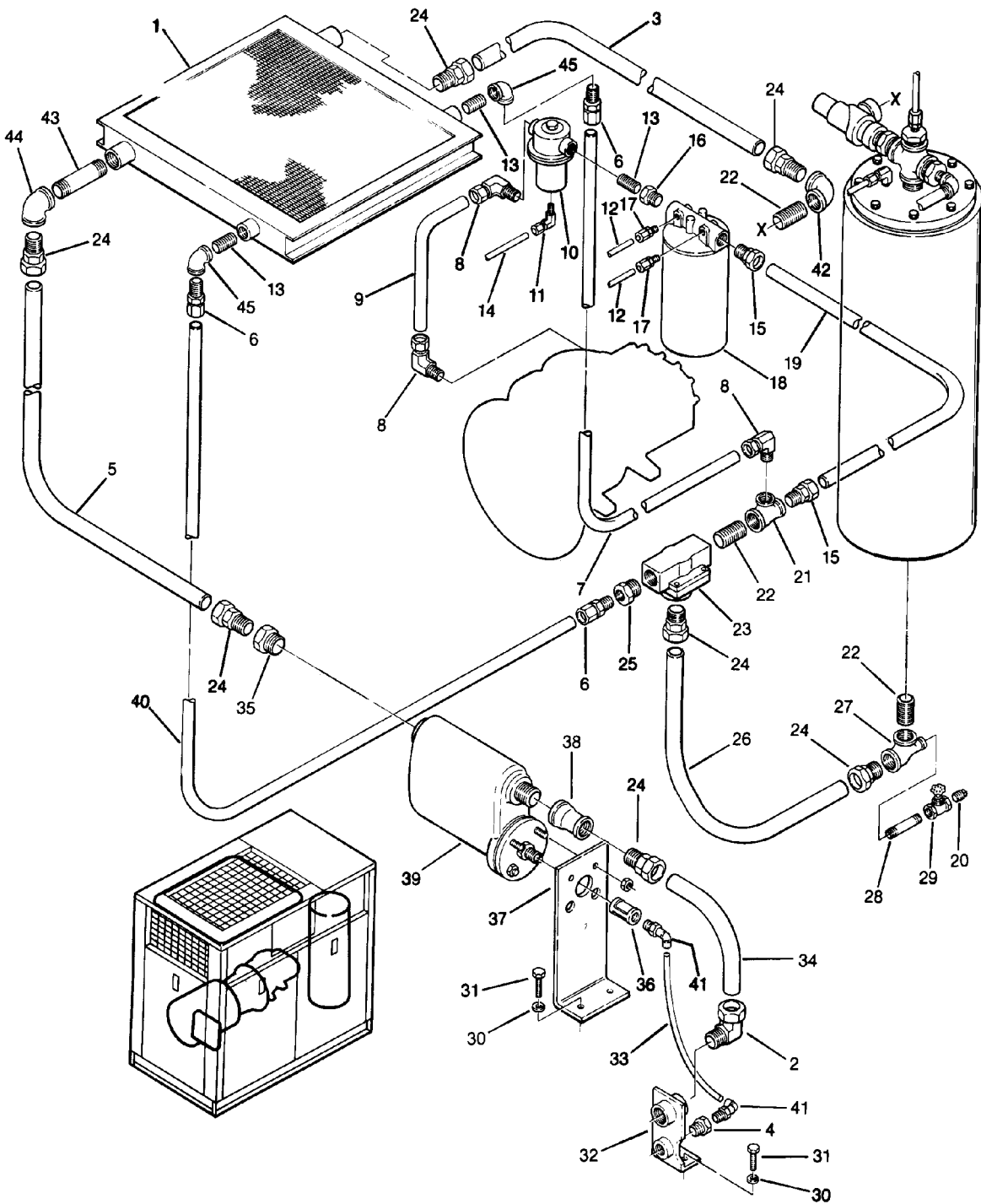
(II) For maintenance on fluid filter no. 250025-522, order repair kit no. 250025-526.

(III) For maintenance on thermal valve no. 014512, order repair kit no. 001168.

PLEASE NOTE: WHEN ORDERING PARTS, INDICATE SERIAL NUMBER OF COMPRESSOR

Section 1 ILLUSTRATIONS AND PARTS LIST

1.6 COMPRESSOR COOLING AND LUBRICATION SYSTEM (AIR-COOLED, 12 SERIES, 40 AND 50HP)



Section 1

ILLUSTRATIONS AND PARTS LIST

1.6 COMPRESSOR COOLING AND LUBRICATION SYSTEM (AIR-COOLED, 12 SERIES, 40 AND 50HP)

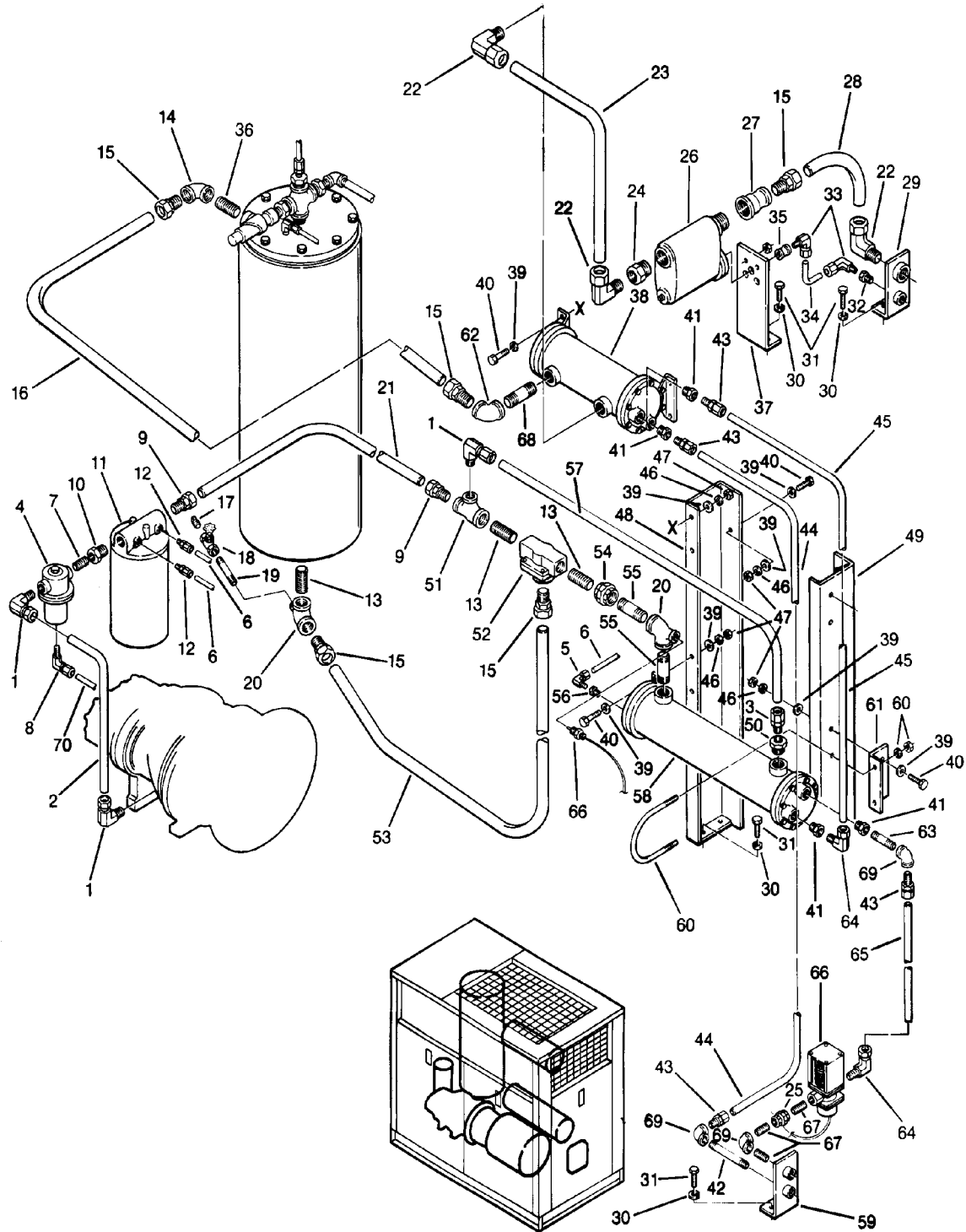
<i>key number</i>	<i>description</i>	<i>part number</i>	<i>quantity</i>
33	tubing, thermosplastic $\frac{3}{8}$ " od (ft.)	250024-746	1
34	tube, 1 $\frac{1}{2}$ "	250018-252	1
35	bushing, reducing 2" x 1 $\frac{1}{2}$ "	802108-060	1
36	coupling, pipe $\frac{1}{2}$ "	801215-020	1
37	bracket, separator trap	250018-378	1
38	coupling, reducing 2" x 1 $\frac{1}{2}$ "	801016-012	1
39	separator/trap (IV)	040847	1
40	tube, 1"	250018-245	1
41	connector, tube elbow $\frac{3}{8}$ " tube x $\frac{1}{2}$ " npt	813706-375	2
42	elbow, 1 $\frac{1}{2}$ " x 1 $\frac{1}{4}$ " reducing	801606-050	1
43	nipple, pipe 1 $\frac{1}{2}$ " x 7 $\frac{1}{2}$ "	822124-075	1
44	elbow, pipe 90° 1 $\frac{1}{2}$ "	801515-060	1
45	elbow, pipe 90° 1"	801515-040	2

(IV) For maintenance on separator/trap no. 040847, order separator kit no. 044374.

PLEASE NOTE: WHEN ORDERING PARTS, INDICATE SERIAL NUMBER OF COMPRESSOR

Section 1 ILLUSTRATIONS AND PARTS LIST

1.7 COMPRESSOR COOLING AND LUBRICATION SYSTEM (WATER-COOLED, 12 SERIES 40 AND 50HP)



Section 1

ILLUSTRATIONS AND PARTS LIST

1.7 COMPRESSOR COOLING AND LUBRICATION SYSTEM (WATER-COOLED, 12 SERIES 40 AND 50HP)

<i>key number</i>	<i>description</i>	<i>part number</i>	<i>quantity</i>
1	elbow, tube—m 1" x 1"	810516-100	3
2	tube, 1"	250032-112	1
3	connector, tube 1"	810216-100	1
4	valve, fluid stop (I)	016741	1
5	elbow, tube—m ¼" x ¼"	810504-025	1
6	tube, ¼" (ft.)	841015-004	3
7	nipple, pipe xs 1" x close	822216-000	1
8	elbow, tube—m 5/16" x ¼"	810505-012	1
9	connector, tube 1¼" x 1¼"	810220-125	2
10	bushing, reducing 1¼" x 1"	802105-040	1
11	filter, fluid (II)	250025-522	1
12	connector, tube ¼"	810204-025	2
13	nipple, pipe 1½" x close	822224-000	3
14	elbow, reducing 1½" x 1¼"	801606-050	1
15	connector, tube—m 1½" x 1½"	810224-150	5
16	tube, 1½"	250018-400	1
17	plug, pipe ½"	807800-020	3
18	valve, globe ½"	041007	1
19	nipple, pipe ½" x 4"	822108-040	1
20	tee, reducing 1½" x ½" x 1½"	802206-026	2
21	tube, 1¼"	250018-246	1
22	elbow, tube—m 1½" x 1½"	810524-150	3
23	tube, 1½"	250018-401	1
24	bushing, reducing 2" x 1½"	802108-060	1
25	union, pipe ¾"	802515-030	1
26	separator/trap (III)	040847	1
27	coupling, reducing 2" x 1½"	801016-012	1
28	tube, 1½"	250018-252	1
29	bracket, air connector and condenser drain	250017-233	1
30	washer, springlock ½"	837508-125	8
31	capscrew, hex ½"-13 x 1½" gr5	828608-150	8

(continued on Page 17)

(I) For maintenance on fluid stop valve no. 016741, order repair kit no. 001684.

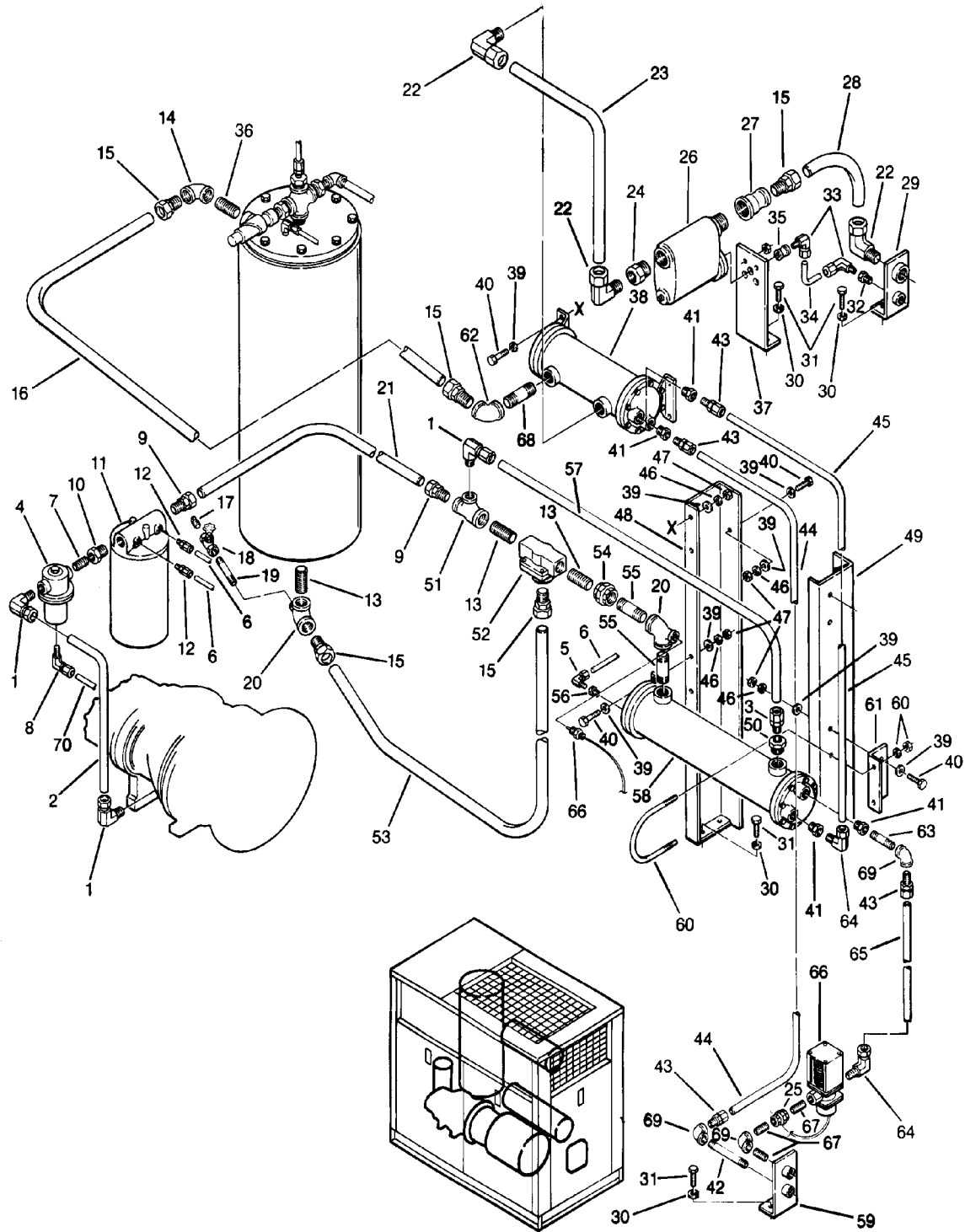
(II) For maintenance on fluid filter no. 250025-522, order repair kit no. 250025-526.

(III) For maintenance on separator/trap no. 040847, order separator kit no. 044374.

PLEASE NOTE: WHEN ORDERING PARTS, INDICATE SERIAL NUMBER OF COMPRESSOR

Section 1
ILLUSTRATIONS AND PARTS LIST

1.7 COMPRESSOR COOLING AND LUBRICATION SYSTEM (WATER-COOLED, 12 SERIES, 40&50HP)



Section 1 ILLUSTRATIONS AND PARTS LIST

1.7 COMPRESSOR COOLING AND LUBRICATION SYSTEM (WATER-COOLED, 12 SERIES, 40&50HP)

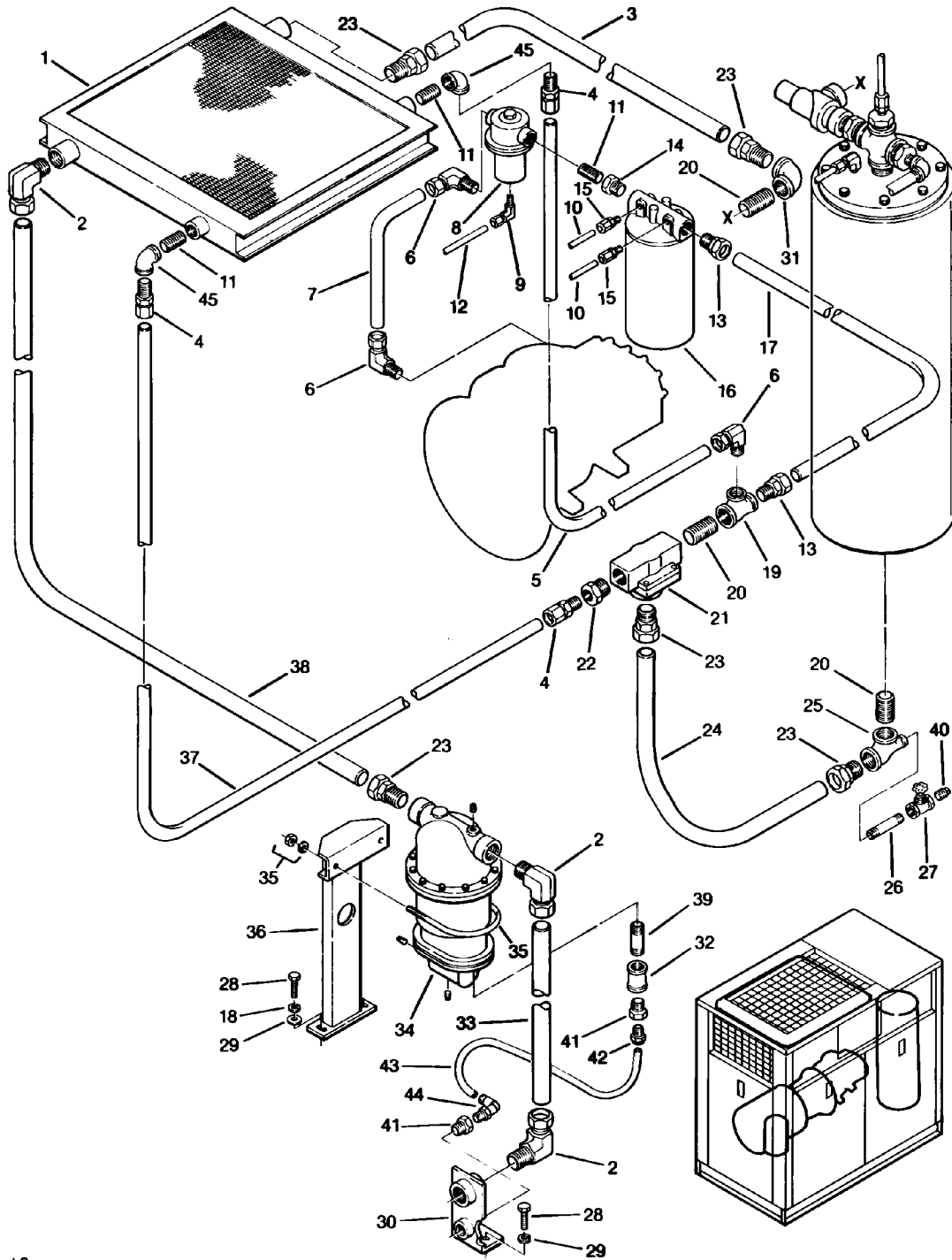
<i>key number</i>	<i>description</i>	<i>part number</i>	<i>quantity</i>
32	bushing, reducing $\frac{3}{4}$ " x $\frac{1}{2}$ "	802103-020	1
33	connector, tube-el $\frac{1}{2}$ "mnpt x $\frac{3}{8}$ "t	813706-375	2
34	tubing, thermoplastic $\frac{3}{8}$ "od (ft.)	250024-746	1
35	coupling, pipe $\frac{1}{2}$ "	801215-020	1
36	nipple, $1\frac{1}{4}$ " x close	822220-000	1
37	bracket, separator/trap	250018-378	1
38	aftercooler	250017-527	1
39	washer, regular $\frac{3}{8}$ "	838206-071	20
40	capscrew, $\frac{3}{8}$ " x $1\frac{1}{4}$ "	828606-125	12
41	bushing, reducing hex 1" x $\frac{3}{4}$ "	802104-030	4
42	nipple, pipe $\frac{3}{4}$ " x 5" (40 and 50HP)	822112-050	1
43	connector, tube-m $\frac{3}{4}$ "	810212-075	4
44	tube, $\frac{3}{4}$ "	250018-407	1
45	tube, $\frac{3}{4}$ "	250018-403	1
46	washer, springlock regular $\frac{3}{8}$ "	837506-094	14
47	nut, hex $\frac{3}{8}$ "-16	825006-337	14
48	support, starter box - right hand	250017-977	1
49	support, starter box - left hand	250017-978	1
50	bushing, reducing hex $1\frac{1}{2}$ " x 1"	802106-040	1
51	tee, reducing $1\frac{1}{2}$ " x $1\frac{1}{4}$ " x $1\frac{1}{2}$ "	802206-054	1
52	valve, thermal (IV)	014512	1
53	tube, $1\frac{1}{2}$ "	250018-376	1
54	union, pipe $1\frac{1}{2}$ "	802515-060	1
55	nipple, pipe $1\frac{1}{2}$ " x $2\frac{1}{2}$ "	822124-025	2
56	bushing, reducing $\frac{3}{8}$ " x $\frac{1}{4}$ "	807601-010	1
57	tube, 1"	250018-398	1
58	cooler, fluid	040680	1
59	bracket, water connector	250017-234	1
60	clamp, 5"	043364	1
61	bracket, cooler support	250019-027	1
62	elbow, pipe $1\frac{1}{2}$ "	801515-060	1
63	nipple, pipe $\frac{3}{4}$ " x $2\frac{1}{2}$ "	822112-025	1
64	elbow, tube-m $\frac{3}{4}$ " x $\frac{3}{4}$ "	810512-075	2
65	tube, $\frac{3}{4}$ "	250018-405	1
66	valve, water regulating $\frac{3}{4}$ "	047398	1
67	nipple, pipe $\frac{3}{4}$ " x close	822212-000	3
68	nipple, pipe $1\frac{1}{2}$ " x 3"	822124-030	1
69	elbow, pipe $\frac{3}{4}$ "	801515-030	3
70	tube, $\frac{5}{16}$ " stainless steel (ft.)	841215-005	2.7

(IV) For maintenance on thermal valve no. 014512, order repair kit no. 001168.

PLEASE NOTE: WHEN ORDERING PARTS, INDICATE SERIAL NUMBER OF COMPRESSOR

Section 1
ILLUSTRATIONS AND PARTS LIST

1.8 COMPRESSOR COOLING AND LUBRICATION SYSTEM (AIR-COOLED, 12 SERIES, 60HP AND 16 SERIES, 60-75HP)



Section 1

ILLUSTRATIONS AND PARTS LIST

1.8 COMPRESSOR COOLING AND LUBRICATION SYSTEM (AIR-COOLED, 12 SERIES, 60HP AND 16 SERIES, 60-75HP)

<i>key number</i>	<i>description</i>	<i>part number</i>	<i>quantity</i>
1	cooler, fluid and aftercooler assembly	250038-658	1
2	elbow, tube-m 1½" x 1½"	810524-150	3
3	tube, 1½"	250018-259	1
4	connector, tube-m 1" x 1"	810216-100	3
5	tube, 1"	250018-258	1
6	elbow, tube-m 1" x 1"	810516-100	3
7	tube, 1" (12 Series 60HP) • tube, 1" (16 Series (60/75HP))	250038-497 250032-112	1 1
8	valve, fluid stop (I)	016741	1
9	elbow, tube-m 5/16" x 1/4"	810505-025	1
10	tubing, 1/4" (ft.)	841015-004	10
11	nipple, pipe 1" x close	822216-000	3
12	tubing, 5/16" stainless steel (ft.)	841215-005	2.7
13	connector, tube-m 1¼" x 1¼"	810220-125	2
14	bushing, reducing 1¼" x 1"	802105-040	1
15	connector, tube-m ¼"	810204-025	2
16	filter, fluid (II)	250025-522	1
17	tube, 1¼" (12 Series 60HP) • tube, 1¼" (16 Series (60/75HP))	250018-246 250018-255	1 1
18	washer, springlock 1/2"	837508-125	2
19	tee, reducing 1½" x 1¼" x 1"	802206-054	1
20	nipple, pipe 1½" x close	822224-000	2
21	valve, thermal (III)	014512	1
22	bushing, hex 1½" x 1"	802106-040	1
23	connector, tube-m 1½" x 1½"	810224-150	5
24	tube, 1½"	250018-376	1
25	tee, reducing 1½" x 1/2" x 1½"	802206-026	1
26	nipple, pipe 1/2" x 4"	822108-040	1
27	valve, globe 1/2"	041007	1
28	capscrew, hex 1/2"-13 x 1½"	828608-150	3
29	washer, pl-b regular unfinished 1/2"	837208-112	2
30	bracket, air connector and condenser drain	250017-233	1

(continued on Page 21)

(I) For maintenance on fluid stop valve no. 016741, order repair kit no. 001684.

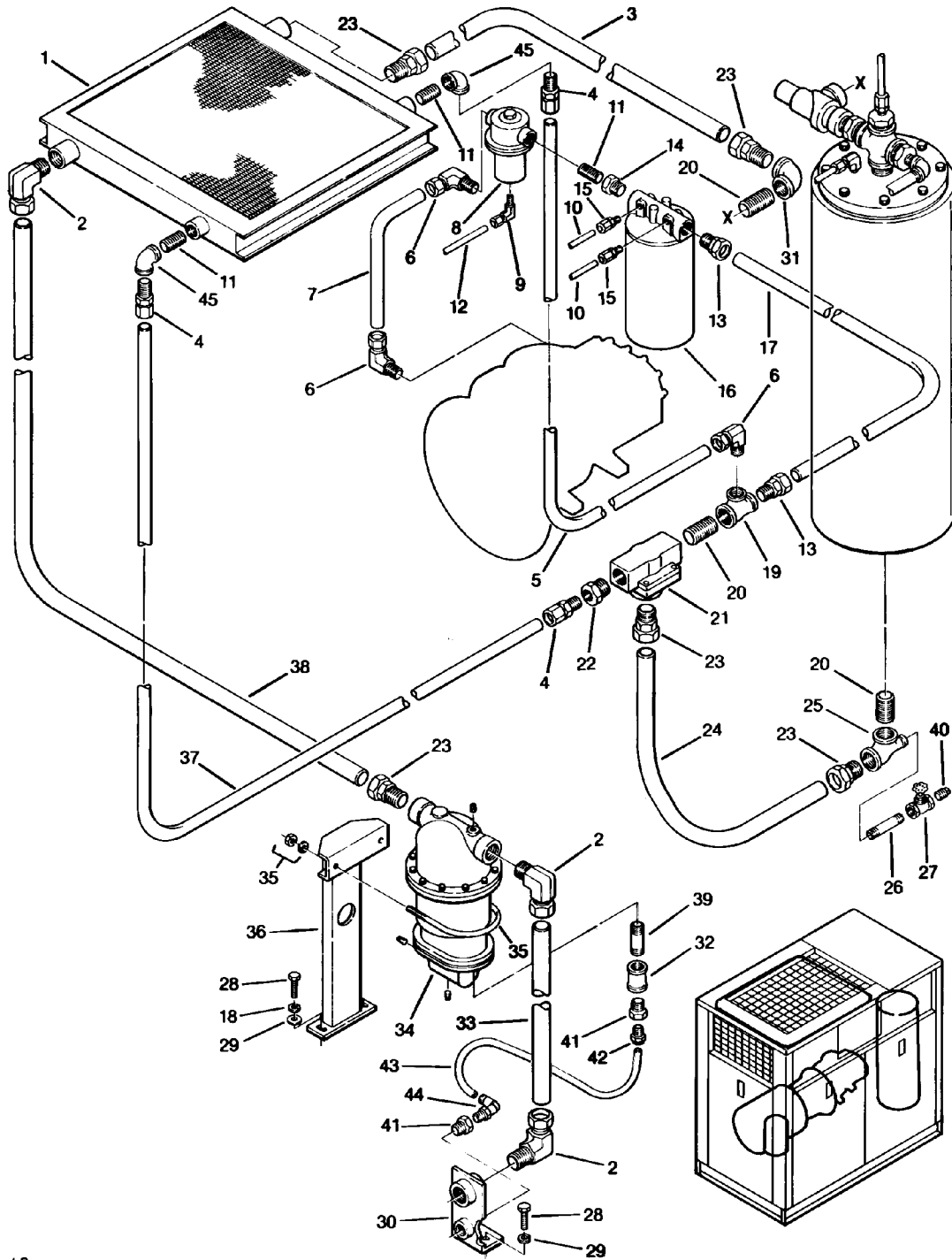
(II) For maintenance on fluid filter no. 250025-522, order repair kit no. 250025-526.

(III) For maintenance on thermal valve no. 014512, order repair kit no. 001168.

PLEASE NOTE: WHEN ORDERING PARTS, INDICATE SERIAL NUMBER OF COMPRESSOR

Section 1
ILLUSTRATIONS AND PARTS LIST

1.8 COMPRESSOR COOLING AND LUBRICATION SYSTEM (AIR-COOLED, 12 SERIES, 60HP AND 16 SERIES, 60-75HP)



Section 1

ILLUSTRATIONS AND PARTS LIST

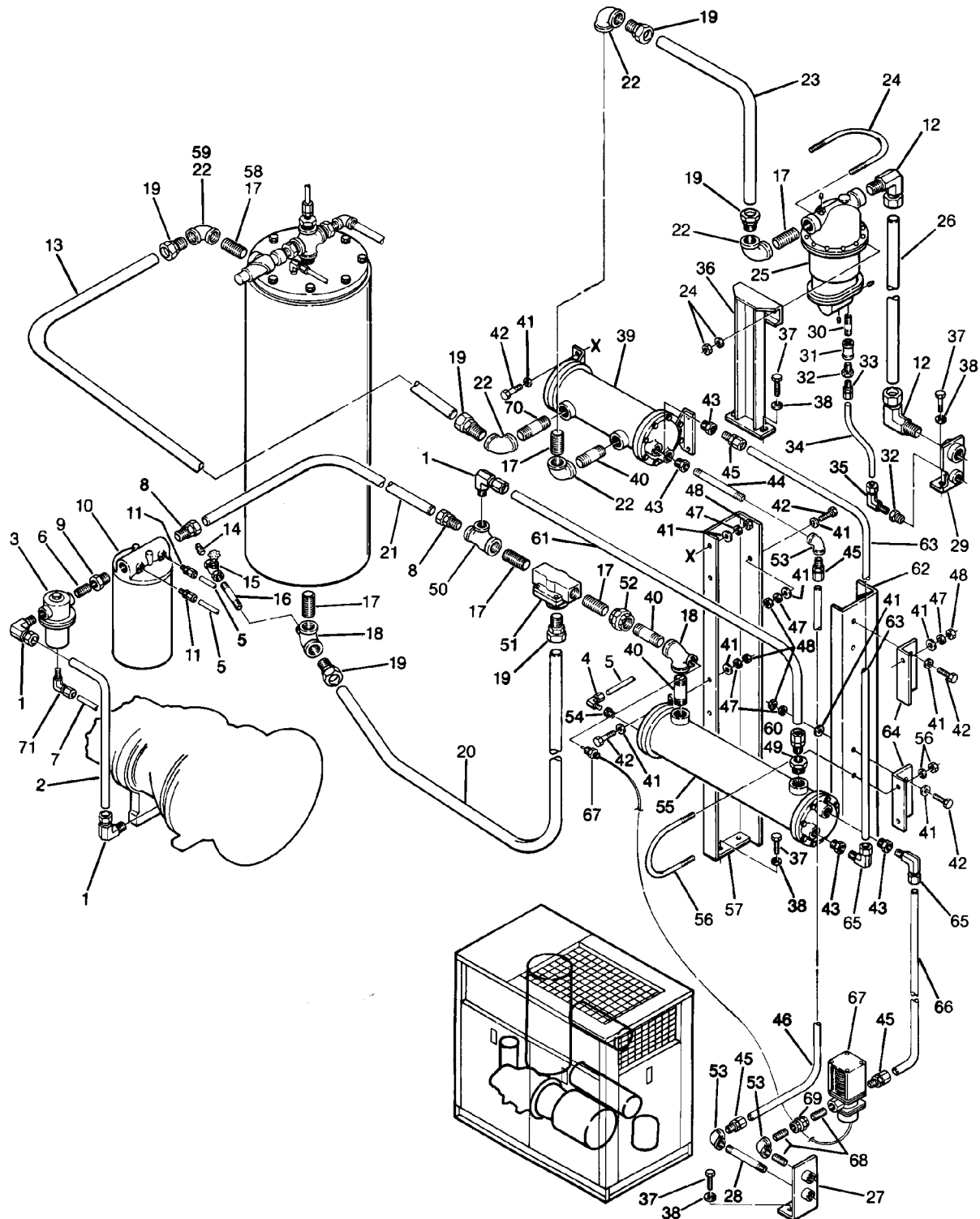
1.8 COMPRESSOR COOLING AND LUBRICATION SYSTEM (AIR-COOLED, 12 SERIES, 60HP AND 16 SERIES, 60-75HP)

<i>key number</i>	<i>description</i>	<i>part number</i>	<i>quantity</i>
31	elbow, pipe 90° 1½"	801515-060	1
32	coupling, pipe ¾"	801215-030	1
33	tube, separator air connector 1½"	250018-260	1
34	separator, combination trap	250018-041	1
35	u-bolt, ½" x 5"	829008-500	1
36	support, moisture separator and trap	250018-160	1
37	tube, 1"	250018-254	1
38	tube, 1½"	250018-375	1
39	nipple, pipe ¾" x 2½"	822112-025	1
40	plug, pipe ½"	807800-020	1
41	bushing, reducing ¾" x ½"	802103-020	2
42	connector, tube straight ½" mnpt x ⅜" t reducing	813606-375	1
43	tubing, thermoplastic ⅜" od (ft.)	250024-746	1
44	connector, tube-el ½" mnpt x ⅜" t	813706-375	1
45	elbow, pipe 90° 1"	801515-040	2

PLEASE NOTE: WHEN ORDERING PARTS, INDICATE SERIAL NUMBER OF COMPRESSOR

Section 1 ILLUSTRATIONS AND PARTS LIST

1.9 COMPRESSOR COOLING AND LUBRICATION SYSTEM (WATER-COOLED, 12 SERIES, 60HP AND 16 SERIES, 60-75HP)



Section 1 ILLUSTRATIONS AND PARTS LIST

1.9 COMPRESSOR COOLING AND LUBRICATION SYSTEM (WATER-COOLED, 12 SERIES, 60HP AND 16 SERIES, 60-75HP)

<i>key number</i>	<i>description</i>	<i>part number</i>	<i>quantity</i>
1	elbow, tube—m 1" x 1"	810516-100	3
2	tube, 1" (12 Series 60HP) • tube, 1" (16 Series 60/75HP)	250038-497 250032-112	1 1
3	valve, fluid stop (I)	016741	1
4	elbow, tube—m ¼" x ¼"	810504-025	1
5	tube, ¼" (ft.)	841015-004	10
6	nipple, pipe 1" x close	822216-000	1
7	elbow, reducing 1¼" x 1"		2.7
8	connector, tube—m 1¼" x 1¼"	810220-125	2
9	bushing, reducing 1¼" x 1"	802105-040	1
10	filter, fluid (II)	250025-522	1
11	connector, tube—m ¼"	810204-025	2
12	elbow, tube—m 1½" x 1½"	810524-150	2
13	tube, 1½"	250018-400	1
14	plug, pipe ½"	807800-020	3
15	valve, globe ½"	041007	1
16	nipple, pipe ½" x 4"	822108-040	1
17	nipple, pipe 1½" x close	822224-000	5
18	tee, reducing 1½" x ½" x 1½"	802206-026	2
19	connector, tube—m 1½" x 1½" (12 Series (60HP) •connector, tube—m 1½" x 1½" (16 Series 60/75HP)	810224-150 810224-150	5 6
20	tube, 1½"	250018-376	1
21	tube, 1¼" (12 Series 60HP) • tube, 1¼" (16 Series 60/75HP)	250018-246 250018-255	1 1
22	elbow, pipe 1½" (12 Series 60HP) • elbow, pipe 1½" (16 Series 60/75HP)	801515-060 801515-060	3 5
23	tube, 1½"	250018-375	1
24	u-bolt, ½" x 5" pipe	829008-500	1
25	separator, combination trap	250018-041	1
26	tube, 1½"	250018-260	1
27	bracket, water connector ¾" npt	250017-234	1
28	nipple, pipe ¾" x 7"	822112-070	1

(continued on Page 25)

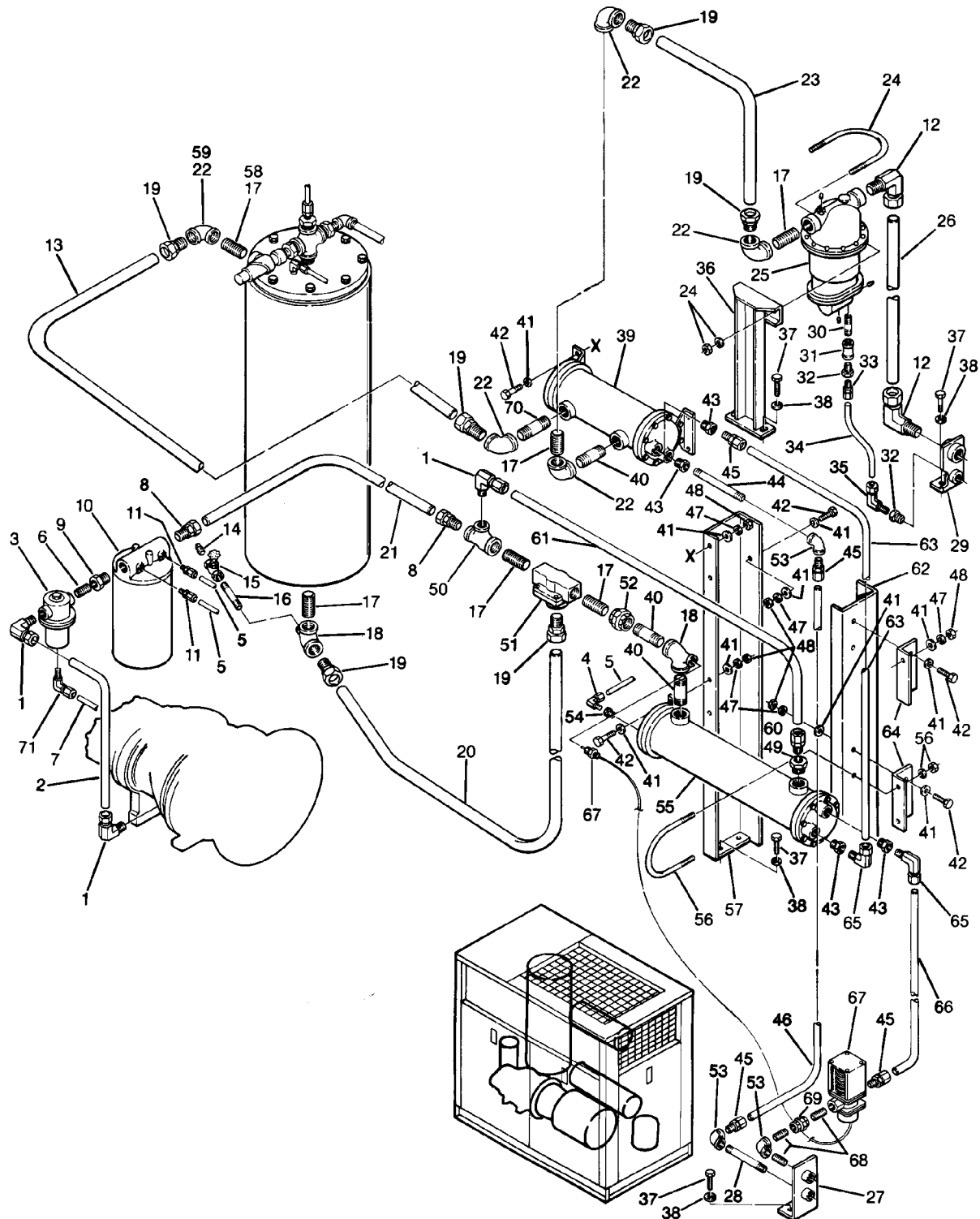
(I) For maintenance on fluid stop valve no. 016741, order repair kit no. 001684.

(II) For maintenance on fluid filter no. 250025-522, order repair kit no. 250025-526.

PLEASE NOTE: WHEN ORDERING PARTS, INDICATE SERIAL NUMBER OF COMPRESSOR

Section 1 ILLUSTRATIONS AND PARTS LIST

1.9 COMPRESSOR COOLING AND LUBRICATION SYSTEM (WATER-COOLED, 12 SERIES, 60HP AND 16 SERIES, 60-75HP)



Section 1

ILLUSTRATIONS AND PARTS LIST

1.9 COMPRESSOR COOLING AND LUBRICATION SYSTEM (WATER-COOLED, 12 SERIES, 60HP AND 16 SERIES, 60-75HP) (continued)

<i>key number</i>	<i>description</i>	<i>part number</i>	<i>quantity</i>
29	bracket, air connector and condenser drain	250017-233	1
30	nipple, pipe 3/4" x 2 1/2"	822112-025	1
31	coupling, pipe 3/4"	801215-030	1
32	bushing, reducing 3/4" x 1/2"	802103-200	2
33	connector, tube straight 1/2" mnpt x 3/8"t reducing	250024-692	1
34	tubing, thermoplastic 3/8"od (ft.)	250024-746	1
35	connector, tube-el 1/2" mnpt x 3/8"t	813706-375	1
36	support, moisture separator and trap	250018-160	1
37	capscrew, 1/2" x 1 1/2" gr5	828608-150	8
38	washer, springlock regular 1/2"	837508-125	8
39	aftercooler	040680	1
40	nipple, pipe 1 1/2" x 2 1/2"	822124-025	3
41	washer, regular 3/8"	838206-071	22
42	capscrew, hex head 3/8"-16 x 1 1/4"	828606-125	16
43	bushing, reducing hex 1" x 3/4"	802104-030	4
44	nipple, pipe 3/4" x 6"	822112-060	1
45	connector, tube-m 3/4"	810212-075	2
46	tube, 3/4"	250018-408	1
47	washer, springlock regular 3/8"	837506-094	16
48	nut, hex 3/8"-16	825006-337	16
49	bushing, reducing hex 1 1/2" x 1"	802106-040	1
50	tee, reducing 1 1/2" x 1 1/4" x 1"	802206-054	1
51	valve, thermal (III)	014512	1
52	union, pipe 1 1/2"	802515-060	1
53	elbow, pipe 3/4"	801515-030	3
54	bushing, reducing 3/8" x 1/4"	807601-010	1
55	cooler, fluid	041015	1
56	clamp, 5"	043364	1
57	support, starter box - right hand	250017-977	1
58	nipple, pipe xs 1 1/4" x close	822220-000	1
59	elbow, reducing 1 1/2" x 1 1/4"	801606-050	1
60	connector, tube-m 1" x 1"	810216-100	1

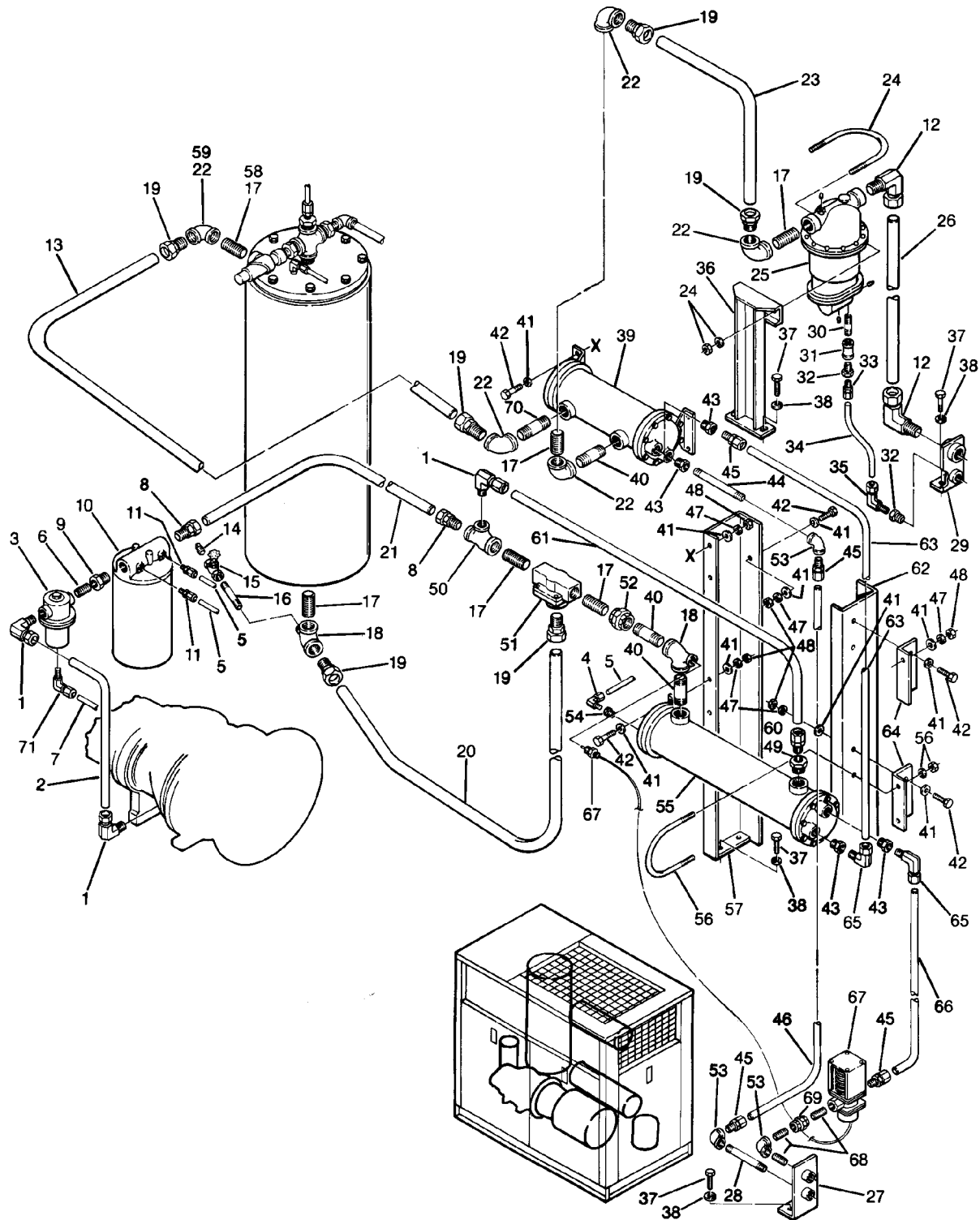
(continued on Page 27)

(III) For maintenance on thermal valve no. 014512, order repair kit no. 001168.

PLEASE NOTE: WHEN ORDERING PARTS, INDICATE SERIAL NUMBER OF COMPRESSOR

Section 1 ILLUSTRATIONS AND PARTS LIST

1.9 COMPRESSOR COOLING AND LUBRICATION SYSTEM (WATER-COOLED, 12 SERIES, 60HP AND 16 SERIES, 60-75HP)



Section 1
ILLUSTRATIONS AND PARTS LIST

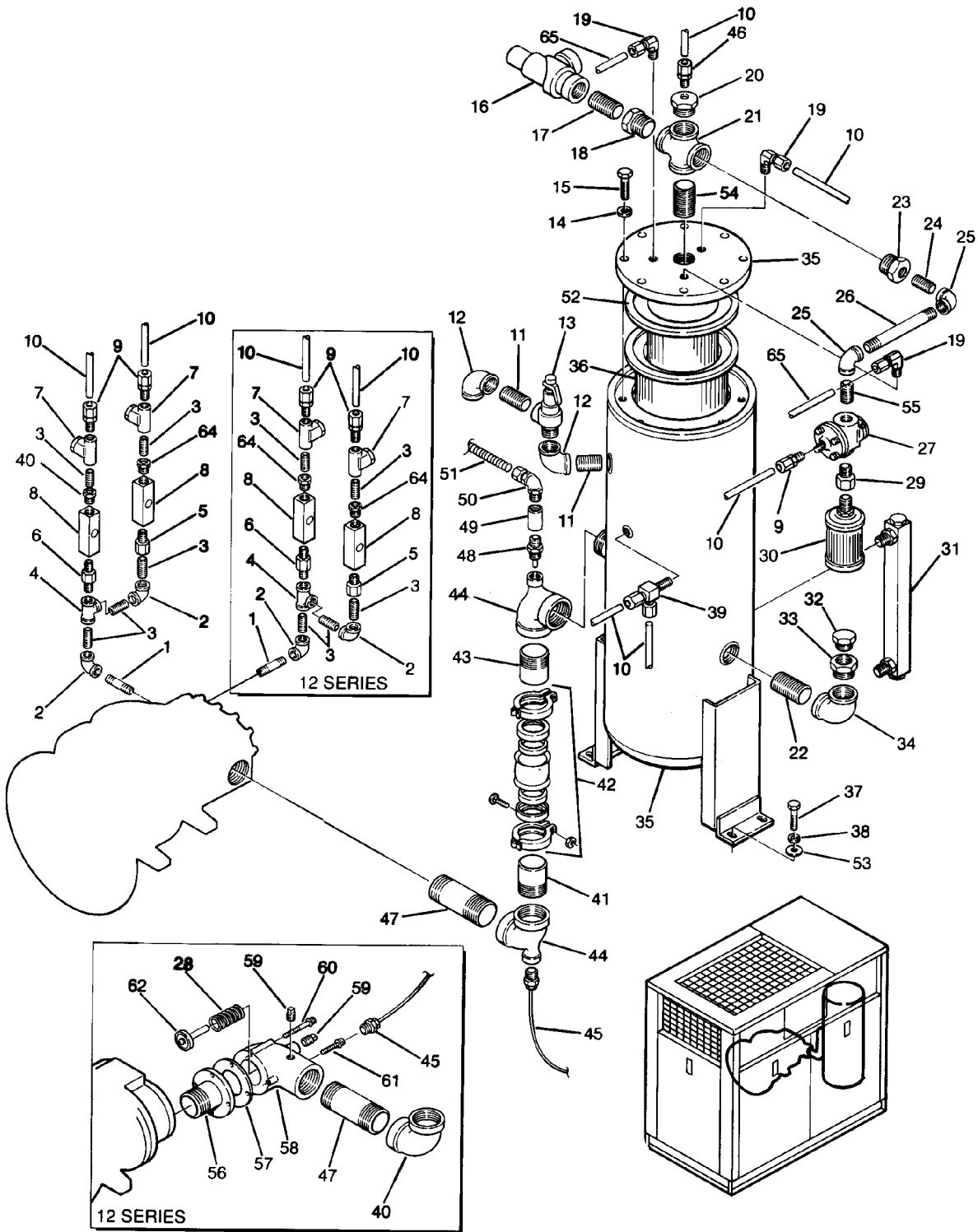
1.9 COMPRESSOR COOLING AND LUBRICATION SYSTEM (WATER-COOLED, 12 SERIES, 60HP AND 16 SERIES, 60-75HP) (continued)

<i>key number</i>	<i>description</i>	<i>part number</i>	<i>quantity</i>
61	tube, 1"	250018-399	1
62	support, starter box - left hand	250017-978	1
63	tube, 3/4"	250018-404	1
64	bracket, cooler 6"	250019-027	2
65	elbow, tube-m 3/4" x 3/4"	810512-075	2
66	tube, 3/4"	250018-406	1
67	valve, water regulating 3/4"	047398	1
68	nipple, pipe 3/4" x close	822212-000	3
69	union, pipe 3/4"	802515-030	1
70	nipple, pipe 1 1/2" x 3"	822124-030	1
71	elbow, tube-m 5/16" x 1/4"	810505-025	1

PLEASE NOTE: WHEN ORDERING PARTS, INDICATE SERIAL NUMBER OF COMPRESSOR

Section 1 ILLUSTRATIONS AND PARTS LIST

1.10 COMPRESSOR DISCHARGE SYSTEM (12 AND 16 SERIES)



Section 1 ILLUSTRATIONS AND PARTS LIST

1.10 COMPRESSOR DISCHARGE SYSTEM (12 AND 16 SERIES)

<i>key number</i>	<i>description</i>	<i>part number</i>	<i>quantity</i>
1	nipple, pipe ¼" x 2" (12 Series) • nipple, pipe ¼" x 1½" (16 Series)	823104-020 823104-015	1 1
2	elbow, pipe 90° ¼"	801515-010	2
3	nipple, pipe xs ¼" x close	823204-000	5
4	tee, pipe galvanized ¼"	804415-010	1
5	orifice, secondary ⅓"	040381	1
6	orifice, primary ⅜"	022033	1
7	strainer, v-type (I)	241771	2
8	glass, sight	046559	2
9	connector, tube ¼" x ¼"	810204-025	3
10	tube, ¼" (ft.)	841015-004	10.5
11	nipple, pipe 1" x close	822216-000	2
12	elbow, 90° 1"	801515-040	2
13	valve, relief 175 PSIG (1206kPa)	248344	1
14	washer, springlock regular ⅝"	837510-156	8
15	capscrew, hex ⅝" - 11 x 2" gr8	828210-200	8
16	valve, minimum pressure/check (12 Series) (II) valve, minimum pressure/check (16 Series) (III)	241581 250016-618	1 1
17	nipple, pipe xs 1¼" x close (12 Series) • nipple pipe xs 1½" x close (16 Series)	822220-000 822224-000	1 1
18	bushing, reducing hex 1½" x 1¼" (12 Series only)	802106-050	1
19	elbow, tube-m ¼"	810504-025	3
20	bushing, reducing hex 1½" x ¼"	802106-010	1
21	cross, pipe 1½"	801315-060	1
22	nipple, pipe 1½" x close	822224-000	1
23	bushing, reducing hex 1½" x ½"	802106-020	1
24	nipple, pipe ½" x close	822208-000	1
25	elbow, pipe 90° ½"	801515-020	2
26	nipple, pipe ½" x 8½"	822108-085	1

(continued on Page 31)

(I) For maintenance on v-type strainer no. 241771, order repair kit no. 241772.

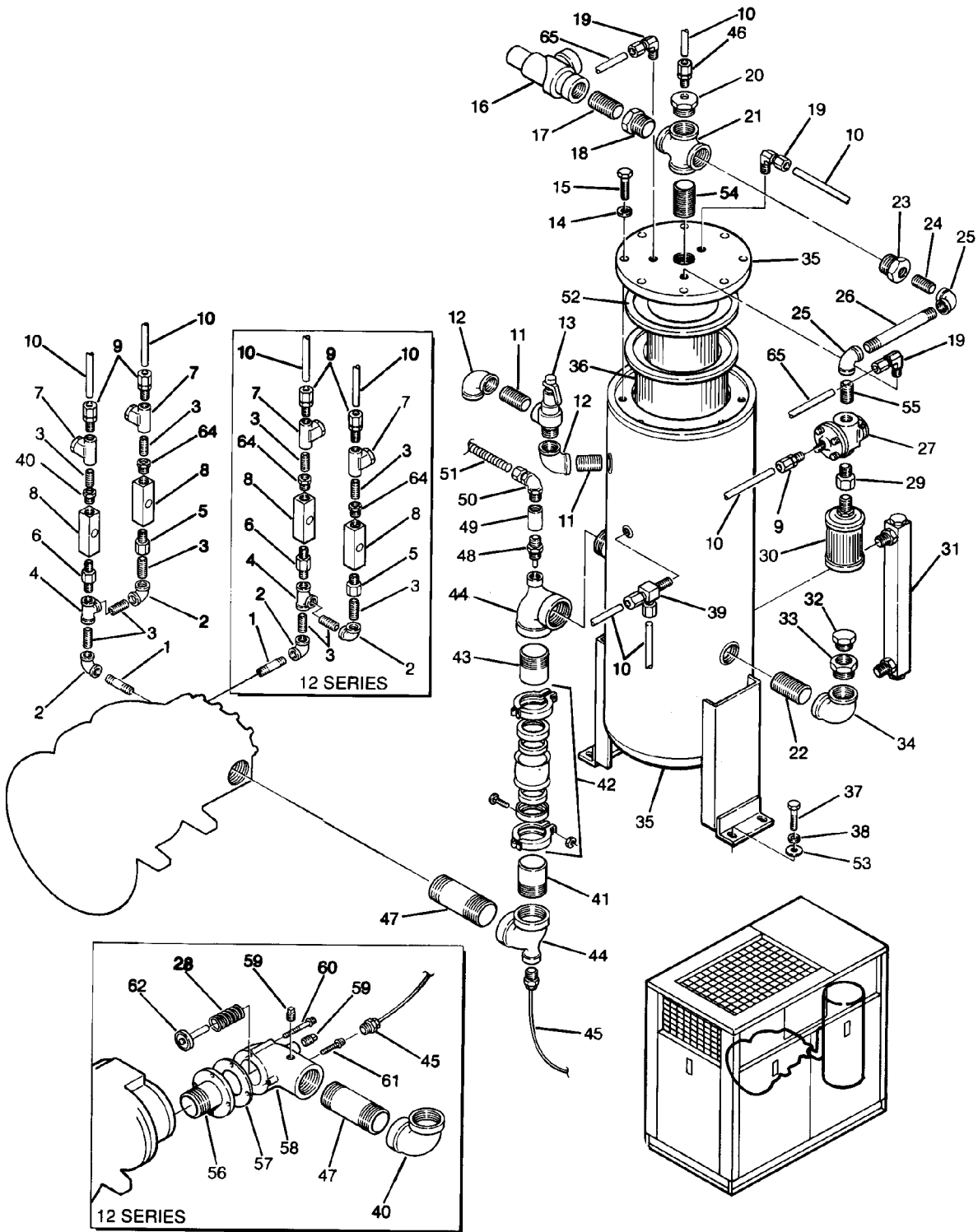
(II) For maintenance on minimum pressure/check valve no. 241581, order repair kit no. 250026-758.

(III) For maintenance on minimum pressure/check valve no. 250016-618, order repair kit no. 250019-444.

PLEASE NOTE: WHEN ORDERING PARTS, INDICATE SERIAL NUMBER OF COMPRESSOR

Section 1 ILLUSTRATIONS AND PARTS LIST

1.10 COMPRESSOR DISCHARGE SYSTEM (12 AND 16 SERIES)



Section 1 ILLUSTRATIONS AND PARTS LIST

1.10 COMPRESSOR DISCHARGE SYSTEM (12 AND 16 SERIES) (continued)

<i>key number</i>	<i>description</i>	<i>part number</i>	<i>quantity</i>
27	valve, blowdown ¼" npt (IV)	044912	1
28	bushing, reducing ½" x ¼"	802102-010	2
29	orifice, ½"m x ½"f x .156	234125-156	1
30	silencer, air ½"	041006	1
31	gauge, fluid level without ball check	046558	1
32	plug, o-ring boss sae 1¼"	040029	1
33	adapter, filler	020044	1
34	elbow, pipe 1½"	801515-060	1
35	tank, receiver separator	250015-284	1
36	element, separator (primary) (V)	250034-115	1
37	capscrew, hex ½"-13 x 1½"	828608-150	4
38	washer, springlock regular ½"	837508-125	4
39	tee, tube-m ¼" x ¼"	810904-025	1
40	tube, ¼" stainless steel (ft.)	841215-004	1.5
41	nipple, half 2½" x 3"	822840-030	1
42	coupling, Flexmaster 2½" (STD) (VI) • coupling, Flexmaster 2½" (KT) (VII)	040648 250007-563	1 1
43	nipple, half 2½" x 4"	822840-040	1
44	tee, reducing 2½" x ½" x 2½" (12 Series) • tee, reducing 2½" x ½" x 2½" (16 Series)	802210-020 802210-020	2 2
45	gauge, temperature 2"	042582	1
46	connector, flex ¼"t x ¼"p	020169	1
47	nipple, pipe 2½" x 6" (12 Series) • nipple, pipe 2½" x 5½" (16 Series)	822140-060 822140-055	1 1
48	switch, temperature 240°F nc	040588	1
49	coupling, conduit rigid ½"	250007-179	1
50	elbow, 90° lg-tite ½"	846600-050	1
51	conduit, csa flex ½" (ft.)	846315-050	2
52	element, separator (secondary)	408167-011	1
53	washer, pl-b regular unfinished ½"	837208-112	4
54	nipple, pipe 1½" x 3"	822124-030	1

(continued on Page 33)

(IV) For maintenance on blowdown valve no. 044912, order repair kit no. 046782.

(V) For maintenance primary separator element no. 250034-115, order repair kit no. 250034-116.

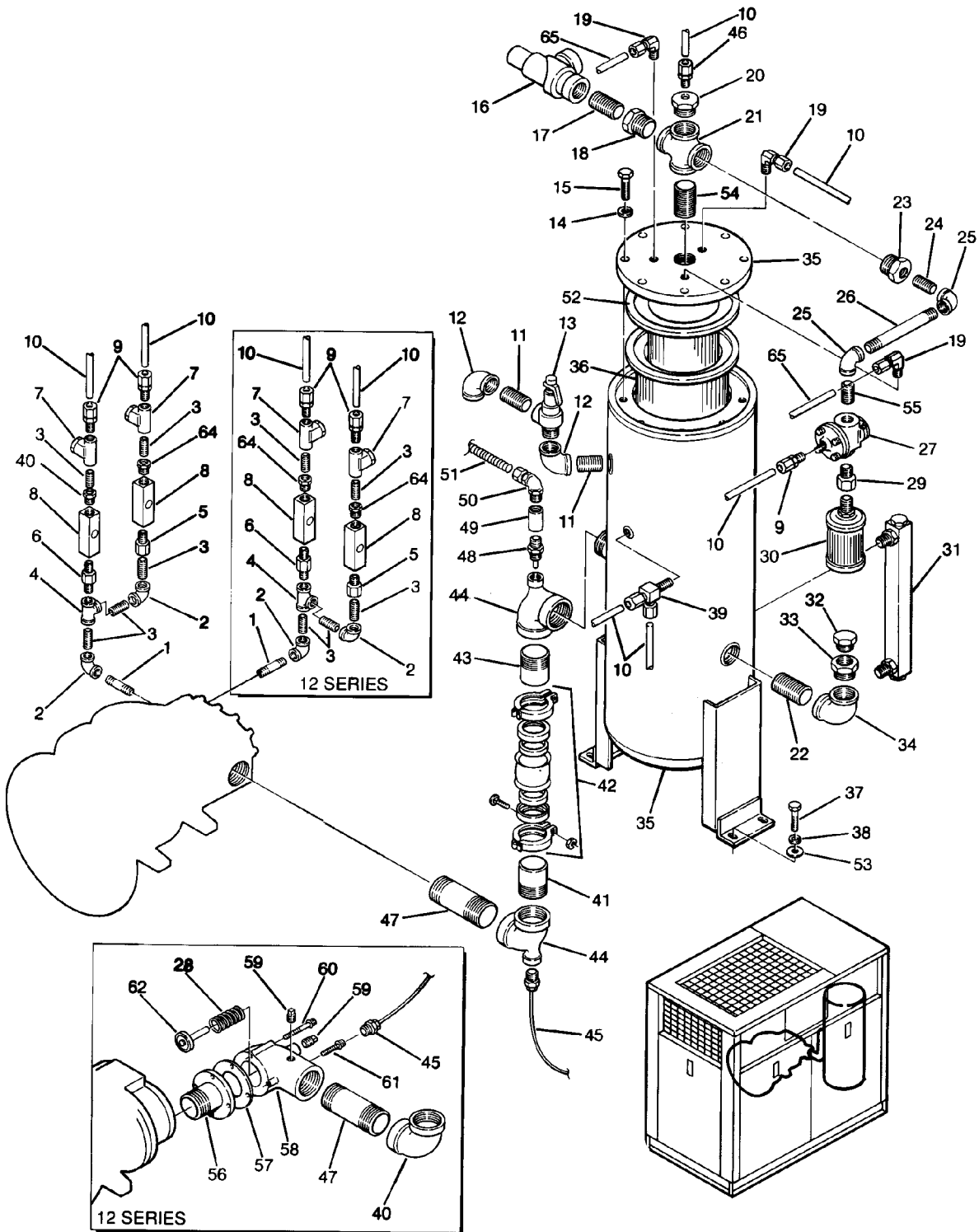
(VI) For maintenance on Flexmaster coupling no. 040648, order repair kit no. 040649 (2 required).

(VII) For maintenance on Flexmaster coupling no. 250007-563, order repair kit no. 250007-564 (2 required).

PLEASE NOTE: WHEN ORDERING PARTS, INDICATE SERIAL NUMBER OF COMPRESSOR

Section 1 ILLUSTRATIONS AND PARTS LIST

1.10 COMPRESSOR DISCHARGE SYSTEM (12 AND 16 SERIES)



Section 1
ILLUSTRATIONS AND PARTS LIST

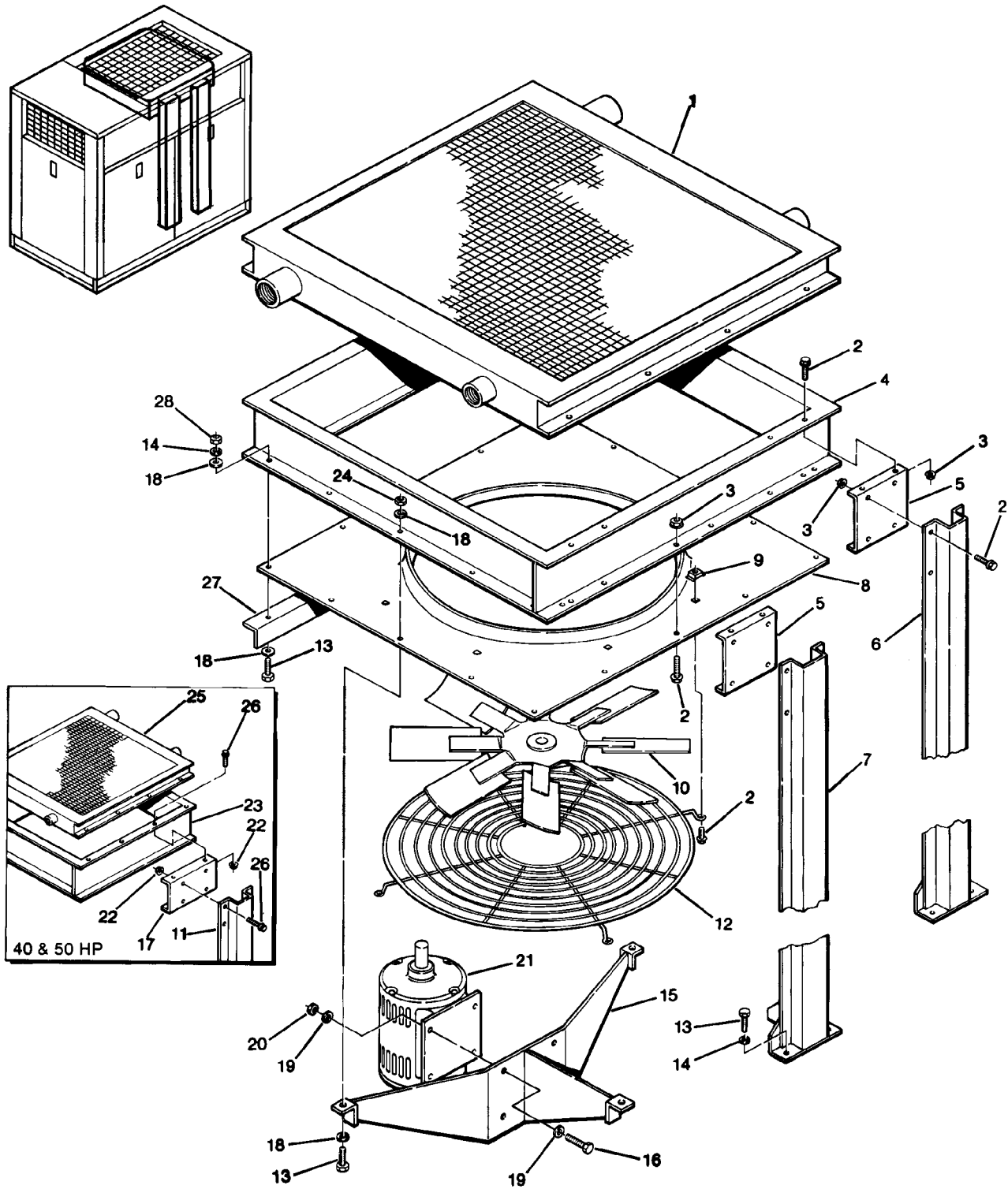
1.10 COMPRESSOR DISCHARGE SYSTEM (12 AND 16 SERIES) (continued)

<i>key number</i>	<i>description</i>	<i>part number</i>	<i>quantity</i>
55	nipple, pipe 1/2" x 4"	822108-040	1
56	adapter, discharge (12 Series only)	012883	1
57	gasket, discharge valve (12 Series only)	040541	1
58	body, discharge valve assembly (12 Series only)	013605	1
59	plug, pipe 1/2"	807800-020	2
60	capscrew, ferry 3/8" - 16 x 3/4"	828406-325	3
61	capscrew, ferry 3/8" - 16 x 1"	828406-100	1
62	disc, discharge valve	013549	1
63	spring, discharge valve	233615	1

PLEASE NOTE: WHEN ORDERING PARTS, INDICATE SERIAL NUMBER OF COMPRESSOR

Section 1 ILLUSTRATIONS AND PARTS LIST

1.11 AIR-COOLED COOLING ASSEMBLY (12 AND 16 SERIES)



Section 1 ILLUSTRATIONS AND PARTS LIST

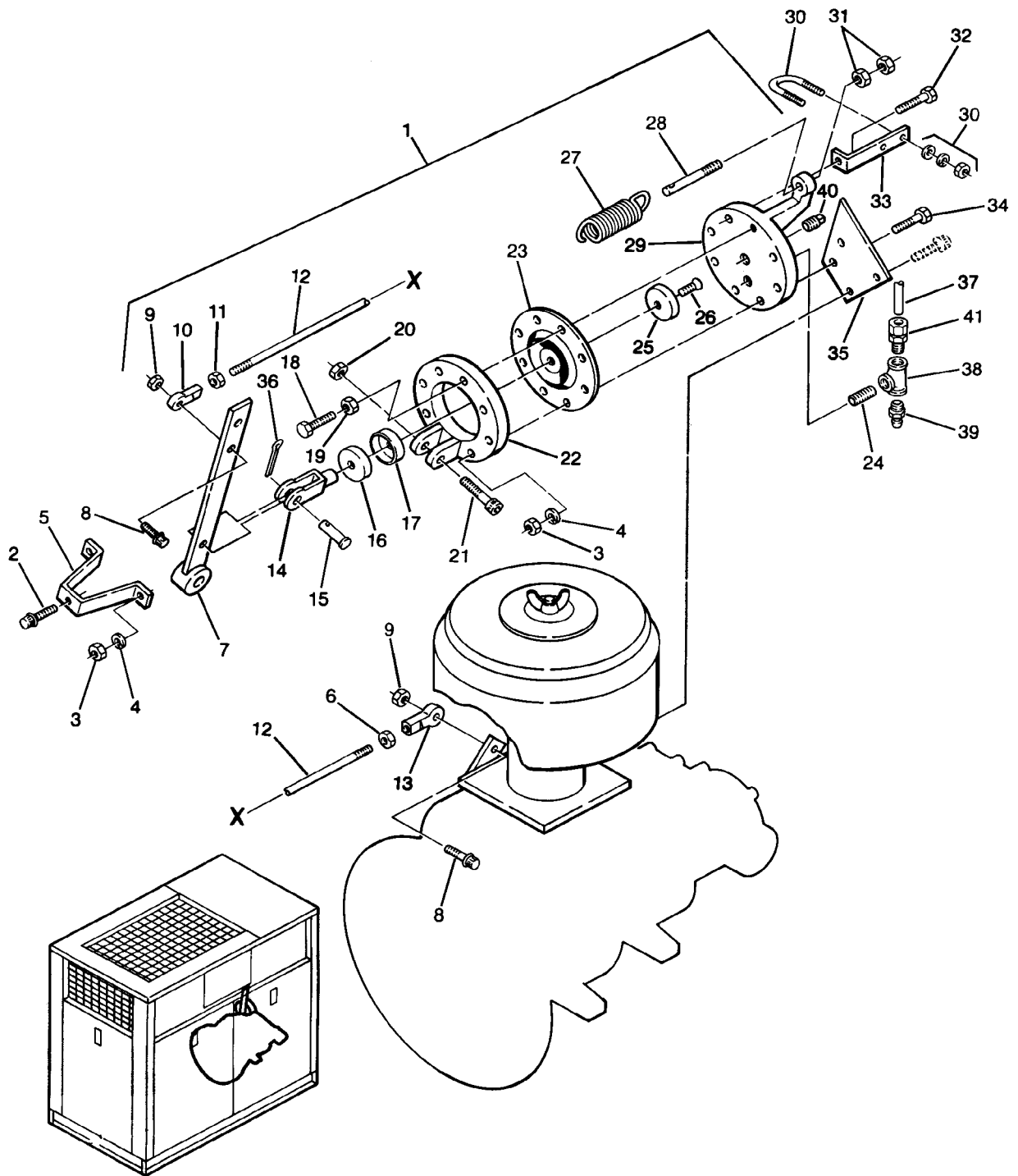
1.11 AIR-COOLED COOLING ASSEMBLY (12 AND 16 SERIES)

<i>key number</i>	<i>description</i>	<i>part number</i>	<i>quantity</i>
1	cooler, fluid aftercooler assembly	250015-524	1
2	screw, hex serrated washer (60 and 75HP)	829705-075	42
3	nut, hex flanged plated washer $\frac{5}{16}$ "-18 (60 and 70HP)	825305-283	24
4	adapter, venturi (60 and 75HP)	250017-270	1
5	bracket, cooler support (60 and 75HP)	250018-002	2
6	support, cooler $5\frac{1}{4}$ "	250017-631	1
7	support, cooler $5\frac{1}{4}$ "	250017-630	1
8	panel, venturi (40 and 50HP) • panel venturi (60 and 75HP)	250017-494 250017-495	1 1
9	nut, retainer $\frac{5}{16}$ "-18	861405-092	4
10	fan, 22" (12 Series only) • fan, 24" (16 Series only)	241390 049971	1 1
11	support, cooler $5\frac{1}{4}$ "	250017-630	1
12	guard, fan 24" (12 Series only) • guard, fan 26" (16 Series only)	241501 241079	1 1
13	capscrew, hex $\frac{3}{8}$ " x $1\frac{1}{4}$ " gr5 (40 and 50HP) • capscrew, hex $\frac{3}{8}$ " x $1\frac{1}{4}$ " gr5 (60 and 75HP)	828606-125 828606-125	9 12
14	washer, springlock regular $\frac{3}{8}$ " (60 and 75HP) • washer, springlock regular (40 and 50HP)	837506-094 837506-094	9 7
15	support, fan motor (12 Series) • support, fan motor (16 Series)	250017-499 250017-502	1 1
16	capscrew, hex $\frac{5}{16}$ "-18 x 1" gr5 (40 and 50HP) • capscrew, hex $\frac{3}{8}$ "-16 x 1" gr5 (60 and 75HP)	828605-100 828606-100	4 4
17	bracket, cooler support (40 and 50HP)	250018-114	1
18	washer, pl-b regular $\frac{3}{8}$ " (60 and 75HP) • washer, pl-b regular $\frac{3}{8}$ " (40 and 50HP)	838206-071 838206-071	12 10
19	washer, pl-b regular $\frac{5}{16}$ "	837205-071	8
20	nut, hex locking plated $\frac{5}{16}$ "-18	825505-166	4
21	motor, 2HP (12 Series only) • motor, 3HP (16 Series only)	050557 050560	1 1
22	nut, hex flanged plated $\frac{5}{16}$ "-18	825305-283	17
23	adapter, venturi (12 only)	250017-271	1
24	nut, hex locking plated $\frac{3}{8}$ "-16	825506-198	6
25	cooler, fluid aftercooler assembly (12 Series only)	250015-525	1
26	screw, hex serrated washer $\frac{5}{16}$ " x $\frac{3}{4}$ "	829705-075	30
27	angle, cooler support (40 and 50HP) • angle, cooler support (60 and 75HP)	250018-121 250017-996	1 1
28	nut hex $\frac{3}{8}$ "-16	824206-337	8

PLEASE NOTE: WHEN ORDERING PARTS, INDICATE SERIAL NUMBER OF COMPRESSOR

Section 1
ILLUSTRATIONS AND PARTS LIST

1.12 CAPACITY CONTROL SYSTEM (12 AND 16 SERIES)



Section 1

ILLUSTRATIONS AND PARTS LIST

1.12 CAPACITY CONTROL SYSTEM (12 AND 16 SERIES)

<i>key number</i>	<i>description</i>	<i>part number</i>	<i>quantity</i>
1	control, Sullicon (12 Series) (I)	250026-010	1
	• control, Sullicon (12 Series) (I)	250026-011	1
2	capscrew, hex $\frac{3}{8}$ " - 16 x 2" gr5	828606-200	1
3	nut, hex $\frac{3}{8}$ " - 16	824206-337	7
4	washer, springlock regular $\frac{3}{8}$ "	837506-094	4
5	bracket, cont. stop	020864	1
6	nut, hex jam - left hand $\frac{5}{16}$ "	824705-195	1
7	lever, control	011084	1
8	capscrew, ferry head $\frac{5}{16}$ " x 1 $\frac{1}{2}$ "	828405-150	1
9	nut, hex $\frac{5}{16}$ " - 18	824205-273	3
10	rod end, spherical $\frac{5}{16}$ " - right hand	040136	1
11	nut, hex jam unfinished $\frac{5}{16}$ " - 24 - right hand	824605-195	1
12	rod end (12 Series)	250002-552	1
	• rod end (16 Series)	020685	1
13	rod end, spherical $\frac{5}{16}$ " - left hand	042004	1
14	yoke, rod end $\frac{1}{4}$ " - 28	040138	1
15	pin, yoke $\frac{1}{4}$ "	040065	1
16	plunger	020094	1
17	seal, cup	042538	1
18	screw, machine hex head $\frac{5}{16}$ " - 24 x 2"	831105-200	1
19	nut, hex jam unfinished $\frac{5}{16}$ " - 24 - right hand	824605-195	1
20	nut, hex locking plated $\frac{3}{8}$ " - 16	825506-166	1
21	screw, machine shoulder $\frac{3}{8}$ " x 2"	830506-200	1
22	body, control	021635	1
23	diaphragm, Sullicon	250020-028	1
24	nipple, galvanized $\frac{1}{4}$ " x 1 $\frac{1}{2}$ " (12 Series only)	823204-015	1
	• nipple, galvanized $\frac{1}{4}$ " x close xs (16 Series only)	823204-000	1
25	washer, backup	021172	1
26	screw, sealing $\frac{1}{4}$ " - 28 x $\frac{3}{4}$ " nf	041264	1
27	spring, control light	250006-526	1
28	bolt, adjusting Sullicon spring	250009-134	1
29	cover, control	021654	1
30	u-bolt, $\frac{1}{2}$ " x $\frac{3}{4}$ " pipe	829004-075	1
31	nut, hex unfinished $\frac{3}{8}$ " - 16	824206-337	2

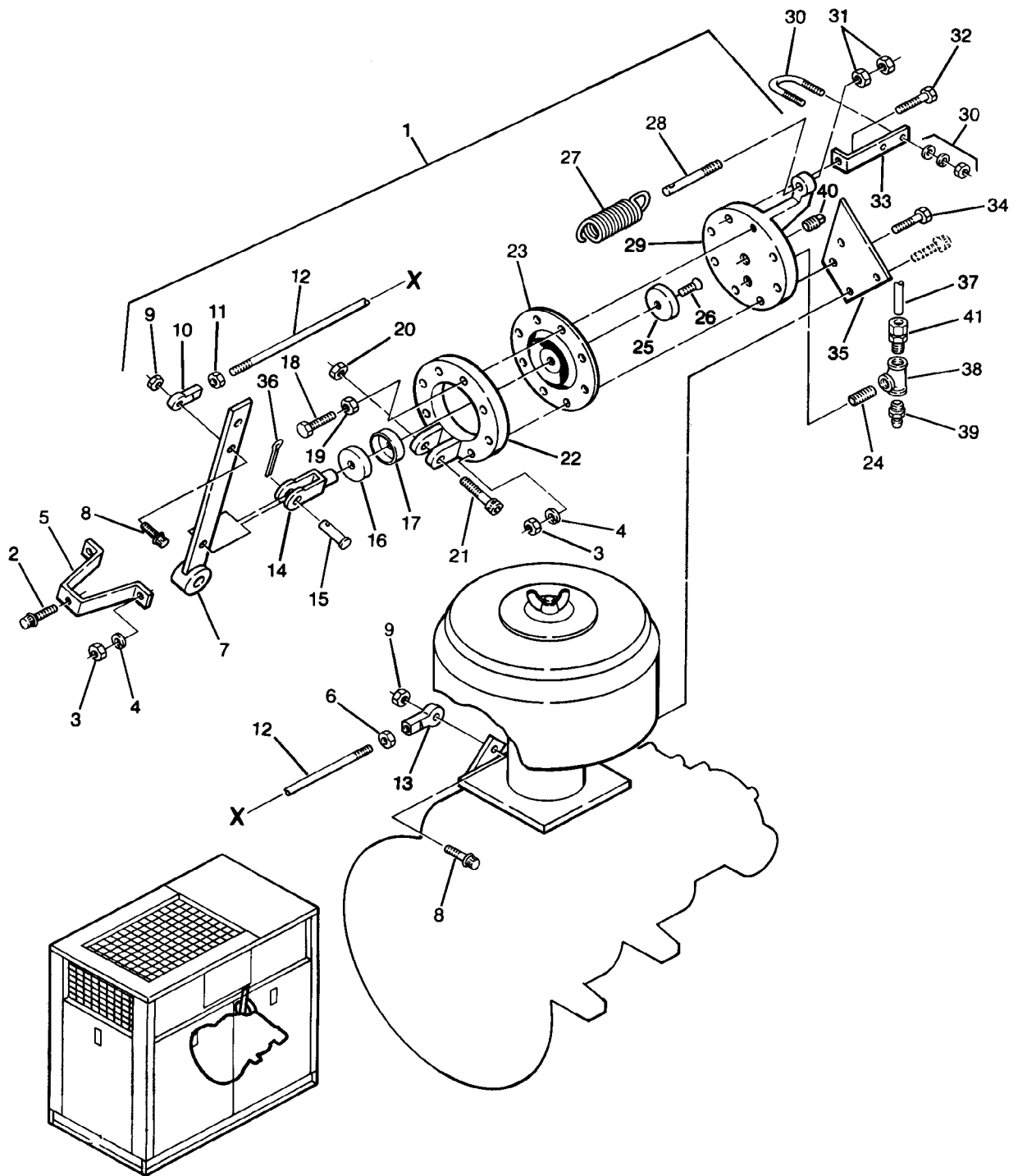
(continued on Page 39)

(I) For maintenance on Sullicon Control no.'s 250026-010 and 250026-011, order repair kit no. 250020-353.

PLEASE NOTE: WHEN ORDERING PARTS, INDICATE SERIAL NUMBER OF COMPRESSOR

Section 1
ILLUSTRATIONS AND PARTS LIST

1.12 CAPACITY CONTROL SYSTEM (12 AND 16 SERIES)



Section 1 ILLUSTRATIONS AND PARTS LIST

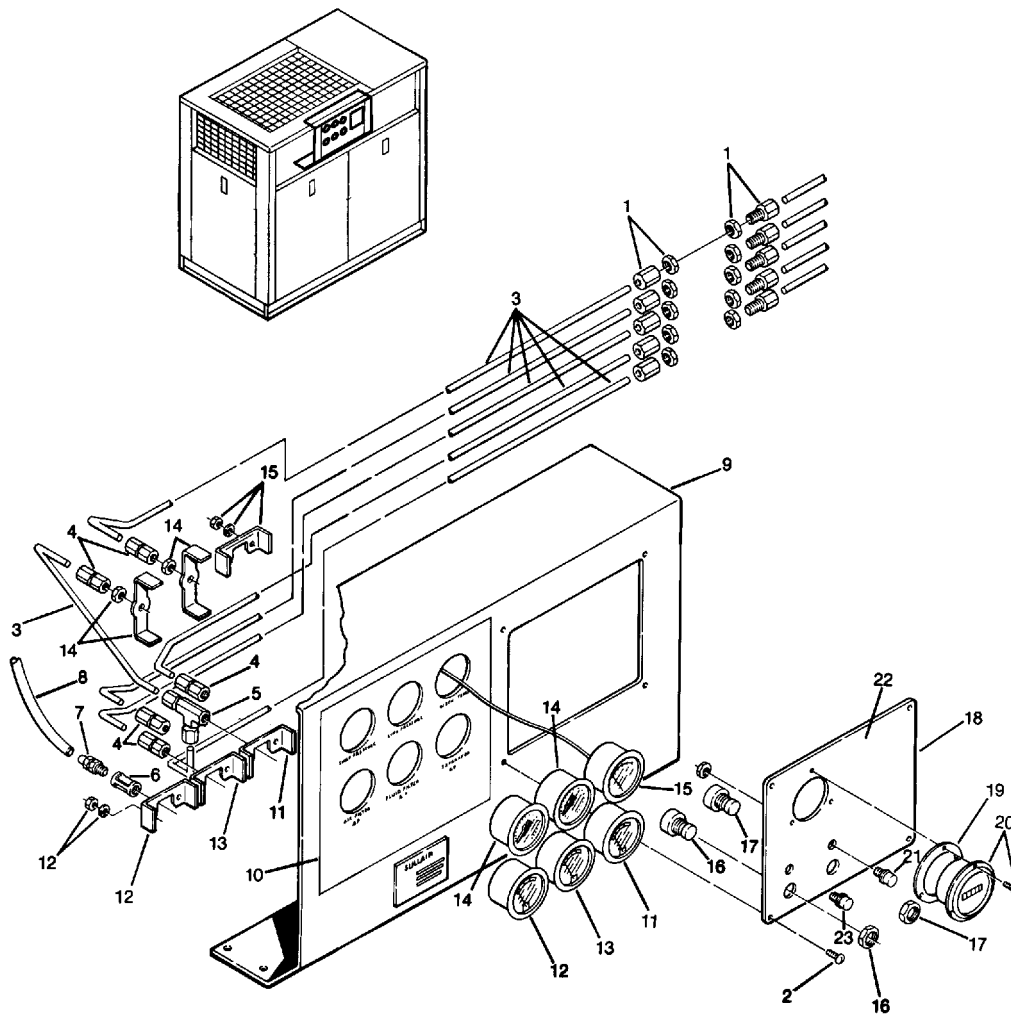
1.12 CAPACITY CONTROL SYSTEM (12 AND 16 SERIES) (continued)

<i>key number</i>	<i>description</i>	<i>part number</i>	<i>quantity</i>
32	capscrew, hex $\frac{5}{16}$ " – 18 x $2\frac{1}{2}$ " gr5	828605–250	2
33	bracket, (12 Series only) • bracket, (16 Series only)	250039–115 250039–114	1 1
34	capscrew, hex $\frac{3}{8}$ " – 16 x $2\frac{1}{2}$ " gr5	828606–250	3
35	bracket, control (12 Series only) • bracket, control (16 Series only)	223681 234217	1 1
36	pin, cotter $\frac{1}{16}$ " x $\frac{3}{4}$ "	827101–075	1
37	tubing, $\frac{1}{4}$ " (ft.)	841015–004	12
38	tee, pipe galvanized $\frac{1}{4}$ "	804415–010	1
39	valve, drain self–close $\frac{1}{8}$ " npt	041111	1
40	plug, pipe $\frac{1}{4}$ "	807800–010	1
41	connector, tube–m $\frac{1}{4}$ " x $\frac{1}{4}$ " (12 Series) elbow, tube–m $\frac{1}{4}$ " x $\frac{1}{4}$ " (16 Series)	810204–025 810504–025	1 1

PLEASE NOTE: WHEN ORDERING PARTS, INDICATE SERIAL NUMBER OF COMPRESSOR

Section 1 ILLUSTRATIONS AND PARTS LIST

1.13 INSTRUMENT PANEL AND PARTS (12 AND 16 SERIES)



Section 1

ILLUSTRATIONS AND PARTS LIST

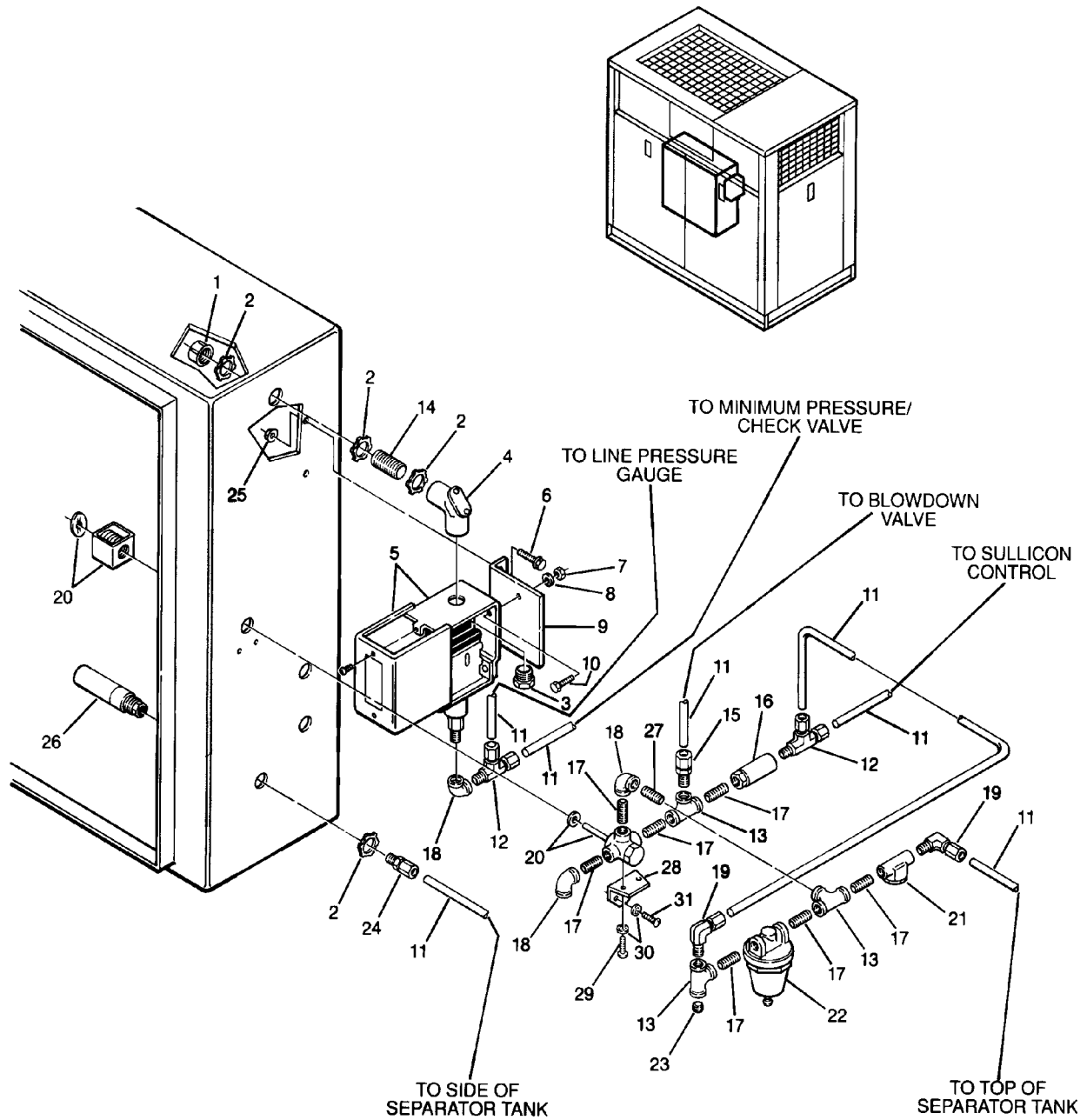
1.13 INSTRUMENT PANEL AND PARTS (12 AND 16 SERIES)

<i>key number</i>	<i>description</i>	<i>part number</i>	<i>quantity</i>
1	union, tube ¼" x ¼"	811104-025	5
2	screw, tc-f pan #8-32 x ½"	835601-050	4
3	tubing, ¼" (ft.)	841015-004	10
4	connector, tube-f ¼" x ⅛"	810104-012	5
5	tee, tube-f ¼" x ⅛"	811004-012	1
6	fitting, pipe coupling galvanized ⅛"	803215-005	1
7	connector, tube straight ⅛" mnpt x ¼" t	813604-125	1
8	hose, nylon ¼" (ft.)	842215-004	6
9	panel, instrument	250019-481	1
10	decal, instrument panel	250015-500	1
11	gauge, differential pressure 0-30 PSI	250003-799	1
12	gauge, vacuum 0-30 water	250003-797	1
13	gauge, differential pressure 0-15 PSI	250003-798	1
14	gauge, pressure 2" diameter	250005-185	2
15	gauge, temperature 2"	042582	1
16	switch, pushbutton START	250016-351	1
17	switch, pushbutton STOP	250016-350	1
18	panel, electrical	250015-471	1
19	gasket, hourmeter	410353	1
20	hourmeter	250015-715	1
21	holder, pilot lamp	043383	1
	• lens, red	043384	1
	• bulb, pilot lamp	043386	1
22	decal, electrical panel	250015-483	1
23	holder, pilot lamp	043383	1
	• lens, green	043385	1
	• bulb, pilot lamp	043386	1

PLEASE NOTE: WHEN ORDERING PARTS, INDICATE SERIAL NUMBER OF COMPRESSOR

Section 1 ILLUSTRATIONS AND PARTS LIST

1.14 ELECTRO-PNEUMATIC CONTROL SYSTEM (12 AND 16 SERIES)



Section 1 ILLUSTRATIONS AND PARTS LIST

1.14 ELECTRO-PNEUMATIC CONTROL SYSTEM (12 AND 16 SERIES)

<i>key number</i>	<i>description</i>	<i>part number</i>	<i>quantity</i>
1	bushing, conduit plastic ½"	848815-050	1
2	locknut, conduit ½"	847200-050	4
3	nipple, chase conduit ½"	847815-050	1
4	elbow, 90° ½"	846915-050	1
5	switch, pressure	040694	1
6	capscrew, hex serrated washer 5/16" x 3/4"	829705-075	2
7	nut, hex plated #10-32	825801-130	2
8	washer, springlock regular #10	838502-047	2
9	bracket, pressure switch support	250018-146	1
10	screw, machine rd head #10-32 x ½"	831702-050	2
11	tubing, ¼" (ft.)	841015-004	60
12	tee, tube-m ¼" x ¼" x ¼"	810904-025	2
13	tee, pipe galvanized ¼"	804415-010	3
14	nipple, conduit ½" x 1½"	250007-169	1
15	connector, tube-m ¼" x ¼"	810204-025	1
16	valve, check ¼"	049905	1
17	nipple, pipe galvanized xs ¼" x close	823204-000	7
18	elbow, pipe galvanized 90° ¼"	803515-010	3
19	elbow, tube-m ¼" x ¼"	810504-025	2
20	valve, solenoid ¼" 3-way (I)	250017-993	1
21	strainer, v-type (II)	241771	1
22	valve, differential pres regulator ¼"npt(III)	406929	1
23	orifice, pipe plug ¼"	232874	1
24	connector, tube-m ¼" x 1/8"	810204-012	1
25	nut, hex flanged plated 5/16"-18	825305-283	2
26	switch, high discharge pressure 135 PSI nc	250017-991	1
27	nipple, galvanized xs ¼" x 1½"	823104-015	1
28	bracket, valve support	250030-037	1
29	screw, pan hood #8-32 x 3/8"	835601-038	2
30	washer, lock int tooth #10	838402-025	4
31	screw, self tap #10-24 x ½"	835602-050	2

(I) For maintenance on pilot valve no. 250017-993, order repair kit no. 250018-970 (valve) or no. 250018-971 (coil).

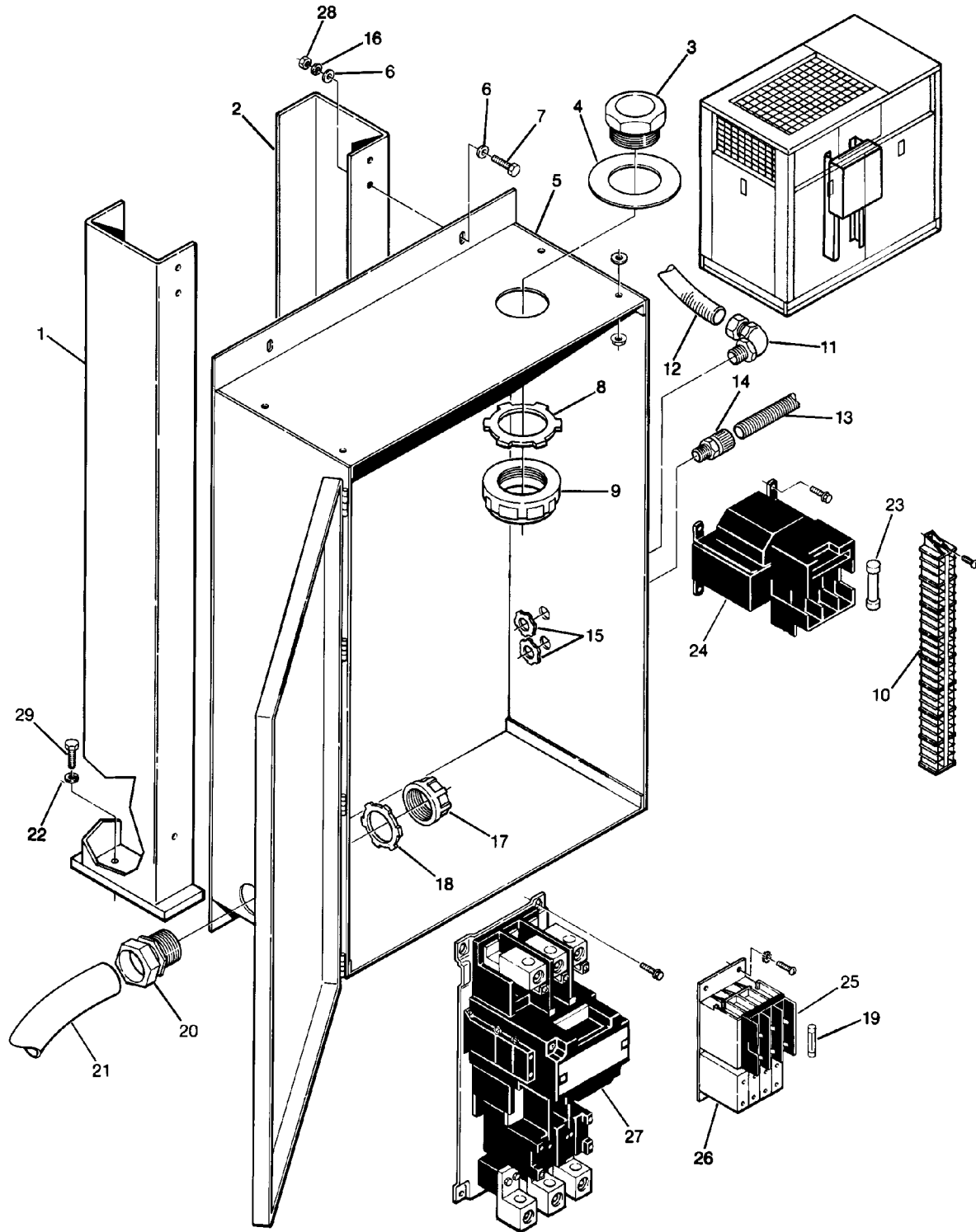
(II) For maintenance on v-type strainer no. 241771, order repair kit no. 241772.

(III) For maintenance on pressure regulator no. 406929, order repair kit no. 041742.

PLEASE NOTE: WHEN ORDERING PARTS, INDICATE SERIAL NUMBER OF COMPRESSOR

Section 1 ILLUSTRATIONS AND PARTS LIST

1.15 ELECTRIC CONTROL BOX ASSEMBLY (12 AND 16 SERIES)



Section 1

ILLUSTRATIONS AND PARTS LIST

1.15 ELECTRIC CONTROL BOX ASSEMBLY (12 AND 16 SERIES)

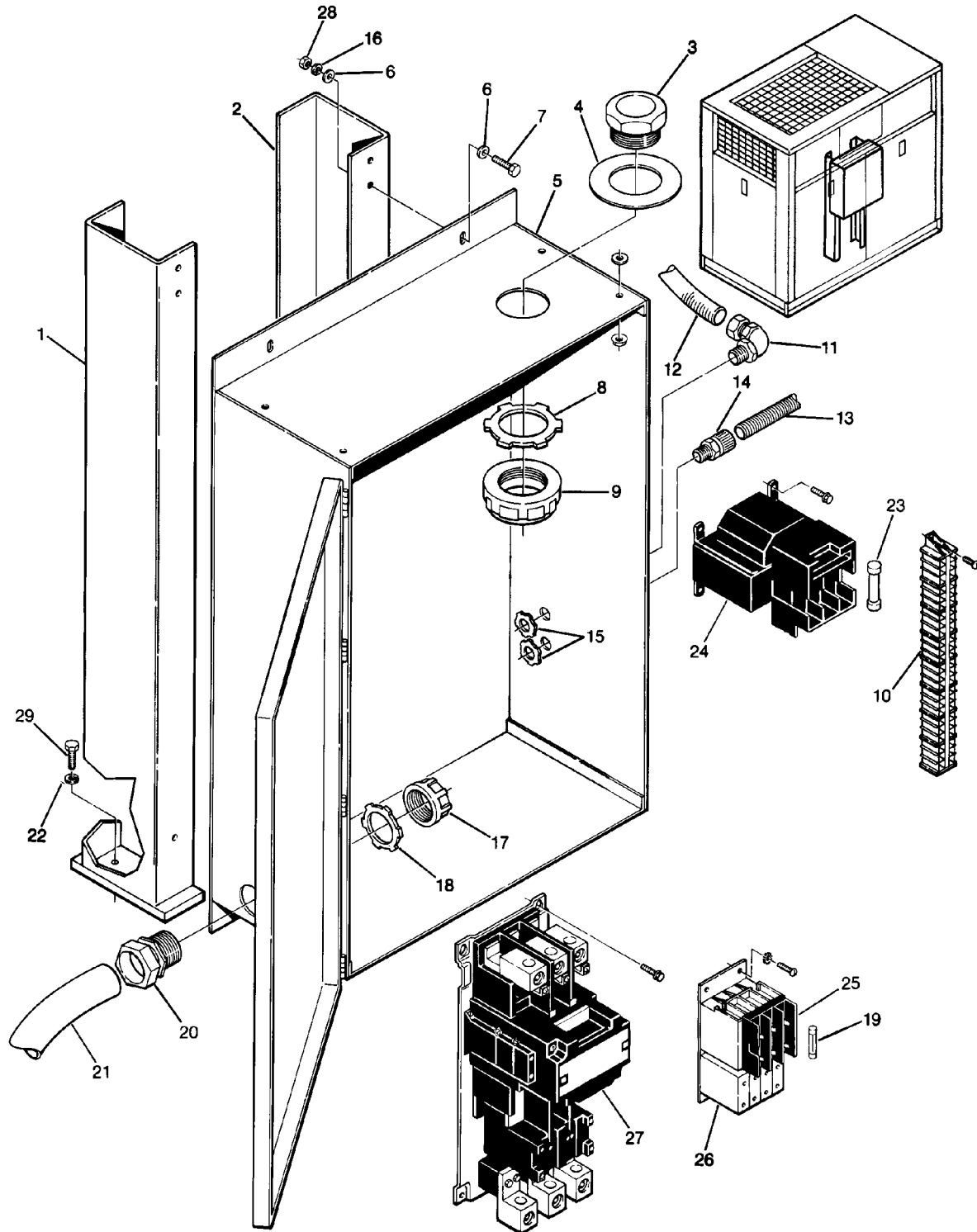
<i>key number</i>	<i>description</i>	<i>part number</i>	<i>quantity</i>
1	support, starter – left hand	250017–978	1
2	support, starter – right hand	250017–977	1
3	nipple, chase 1 ¼"	847815–125	1
4	gasket	250019–557	1
5	starter, assembly Size 3	250023–676	1
	• starter, assembly Size 4	250023–677	1
	• starter, assembly Size 5	250023–678	1
6	washer, plain steel ⅜"	837206–071	8
7	capscrew, hex head ⅜" – 16 x 1 ¼" gr8	828606–125	4
8	locknut conduit 1 ¼"	847200–125	1
9	bushing, conduit 1 ¼"	848815–125	1
10	block, terminal and track	041493	12
11	elbow, 45° conduit	846500–050	1
12	conduit, csa flex ½" (ft.)	846315–050	2
13	wire, neoprene so #12–4 (ft.)	850604–012	6
14	grip, cord for so 12/4	250018–497	2
15	locknut, conduit ½"	847200–050	1
16	washer, springlock regular ⅜"	837506–094	4
17	bushing, 1 ½"	848815–150	1
18	locknut, 1 ½"	847200–150	1
19	fuse, 20a	250019–769	3
20	grip, cord for g–gc #4	250014–557	1
	• grip, cord for g–gc #2	250014–559	2
21	cord, type g–gc #4ga (ft.)	250014–306	4
	• cord, type g–gc #2 ga (ft.)	250014–308	4
22	washer, springlock ½"	837508–125	11
23	fuse, primary 208V (starter size 3)	250026–650	2
	• fuse, primary 208V (starter size 4 & 5)	250006–652	2
	• fuse, primary 230V (starter size 3)	250026–645	2
	• fuse, primary 230V (starter size 4 & 5)	250026–649	2
	• fuse, primary 460V (starter size 3)	250026–645	2
	• fuse, primary 460V (starter size 4 & 5)	250026–649	2
	• fuse, primary 575V (starter size 3)	250026–643	2
	• fuse, primary 575V (starter size 4 & 5)	250026–647	2
	• fuse, secondary 115V (starter size 3)	042259	1
	• fuse, secondary 115V (starter size 4 & 5)	042539	1
24	transformer, 240/480–120V (starter size 3)	250028–721	1
	• transformer, 240/480–120V (starter size 4 & 5)	250028–722	1
	• transformer, 208–120V (starter size 3)	250028–872	1
	• transformer, 208–120V (starter size 4 & 5)	250028–873	1
	• transformer, 575–120V (starter size 3)	250028–884	1
	• transformer, 575–120V (starter size 4 & 5)	250028–885	1

(continued on Page 47)

PLEASE NOTE: WHEN ORDERING PARTS, INDICATE SERIAL NUMBER OF COMPRESSOR

Section 1 ILLUSTRATIONS AND PARTS LIST

1.15 ELECTRIC CONTROL BOX ASSEMBLY (12 AND 16 SERIES)



Section 1

ILLUSTRATIONS AND PARTS LIST

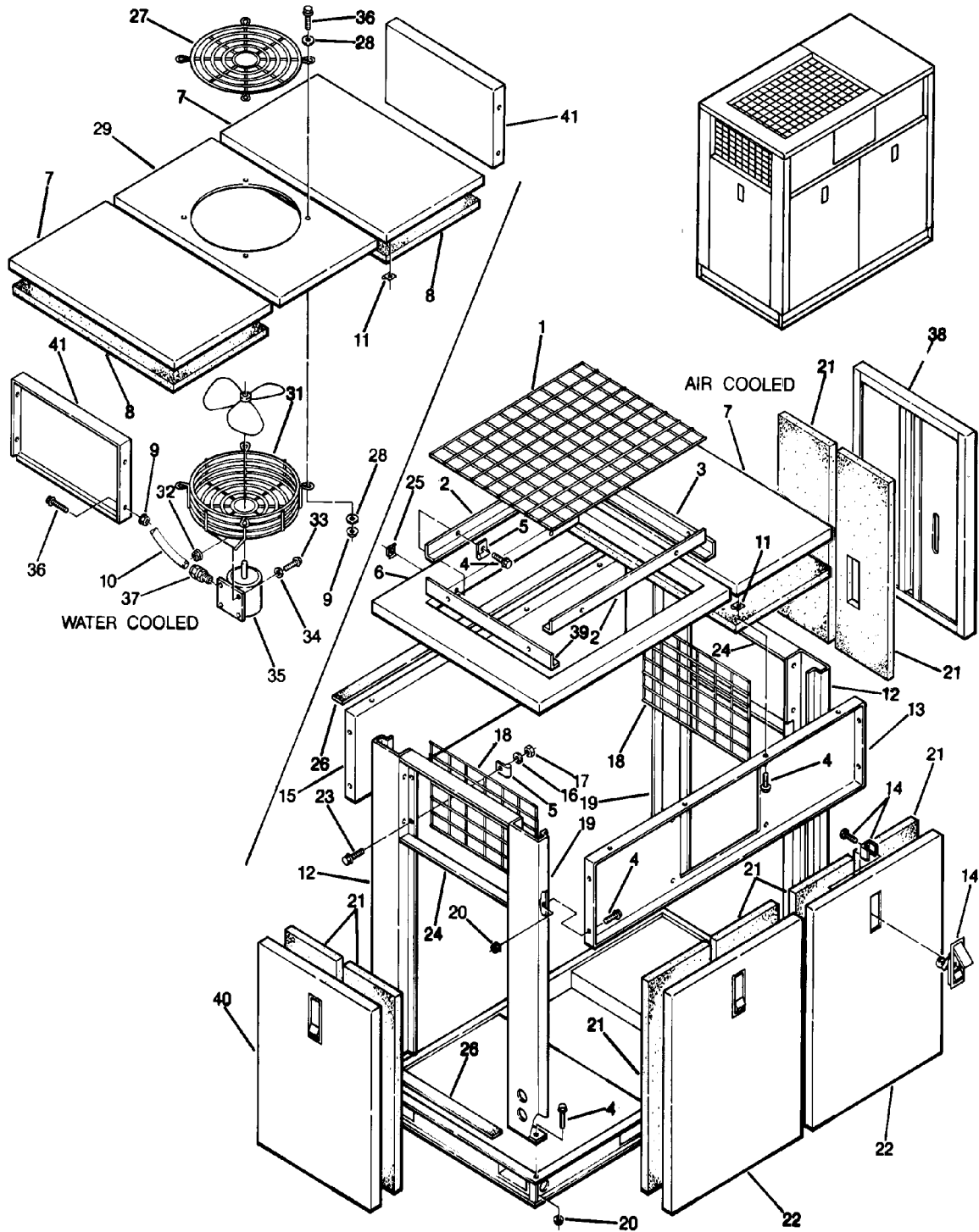
1.15 ELECTRIC CONTROL BOX ASSEMBLY (12 AND 16 SERIES) (continued)

<i>key number</i>	<i>description</i>	<i>part number</i>	<i>quantity</i>
25	fuseholder	250023-290	1
26	starter, open replacement, (size 0)	250021-835	1
	• starter, open replacement (size 1)	250021-836	1
	• relay, overload replacement (size 0)	250021-692	1
	• relay, overload replacement (size 1)	250021-693	1
27	starter, open replacement (size 3)	052363	1
	• starter, open replacement (size 4)	052036	1
	• starter, open replacement (size 5)	052436	1
	• coil, starter replacement (size 3)	250003-422	1
	• coil, starter replacement (size 4)	250003-423	1
	• coil, starter replacement (size 5)	250003-423	1
	• relay, overload replacement (size 3)	250021-595	1
	• relay, overload replacement (size 4)	250021-596	1
	• relay, overload replacement (size 5)	250021-593	1
28	nut, hex $\frac{3}{8}$ "-16	824206-337	4
29	capscrew, hex gr5 $\frac{1}{2}$ "-13 x $1\frac{1}{2}$ "	828608-150	11

PLEASE NOTE: WHEN ORDERING PARTS, INDICATE SERIAL NUMBER OF COMPRESSOR

Section 1 ILLUSTRATIONS AND PARTS LIST

1.16 CANOPY ENCLOSURE AND PARTS (12 AND 16 SERIES)



Section 1 ILLUSTRATIONS AND PARTS LIST

1.16 CANOPY ENCLOSURE AND PARTS (12 AND 16 SERIES)

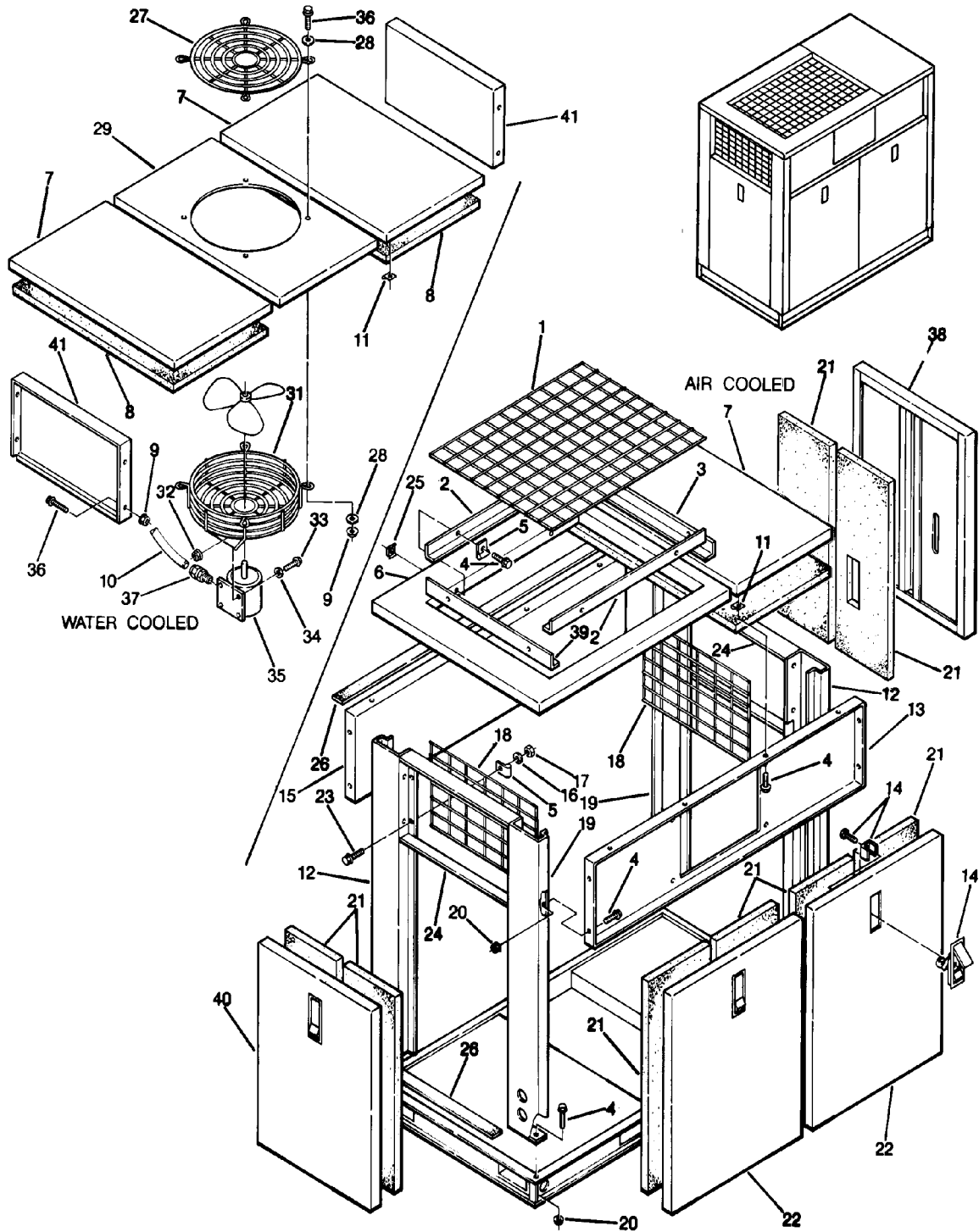
<i>key number</i>	<i>description</i>	<i>part number</i>	<i>quantity</i>
1	grille, cooler (40 and 50HP)	250018-295	1
	• grille, cooler (60 and 75HP)	250018-296	1
2	angle, seal (40 and 50HP)	250018-291	2
	• angle, seal (60 and 75HP)	250018-106	2
3	angle, seal (40 and 50HP)	250018-291	1
	• angle, seal (60 and 75HP)	250034-881	1
4	screw, hex serrated washer $\frac{5}{16}$ "-18 (water-cooled)	829705-075	44
	• screw, hex serrated washer $\frac{5}{16}$ "-18 (air-cooled)	829705-075	40
5	clamp, wire (air-cooled)	043194	16
6	frame, root (40 and 50HP)	250018-268	1
	• frame, roof (40 and 75HP)	250017-865	1
7	panel, access roof	250017-309	1
8	panel, fiberglass roof	250020-012	1
9	nut, hex flange $\frac{5}{16}$ " (air-cooled)	825305-283	4
	• nut, hex flange $\frac{5}{16}$ " (water-cooled)	825305-283	12
10	wire, neoprene #16-4	850604-016	8
11	nut, retainer $\frac{5}{16}$ "-18	861505-140	16
12	panel, corner - right hand	250018-609	2
13	panel, front side	250017-311	1
14	latch, adjustable trigger lock	049764	6
15	panel, back side	250017-312	1
16	washer, springlock $\frac{1}{4}$ "	837504-062	12
17	nut, hex $\frac{1}{4}$ "	824204-226	12
18	grille, enclosure end (air-cooled)	250018-667	2
19	panel, corner - left hand	250018-610	2
20	nut, hex flanged $\frac{5}{16}$ " (water-cooled)	825305-283	16
	• nut, hex flanged $\frac{5}{16}$ " (air-cooled)	825305-283	20
21	panel, fiberglass door	250020-015	12
22	panel, access side	250017-310	4
23	capscrew, hex $\frac{1}{4}$ "-20	829104-100	8
24	panel, end	250018-646	2
25	nut, retainer $\frac{5}{16}$ "-18	861405-092	8
26	felt, weatherstrip (ft.)	043502	92
27	guard, fan 20"	241137	1
28	washer, plain $\frac{5}{16}$ "	838205-071	8
29	panel, access roof	250017-308	1
30	fan, vent 18"	410358	1
31	guard, exhaust fan	410179	1

(continued on Page 51)

PLEASE NOTE: WHEN ORDERING PARTS, INDICATE SERIAL NUMBER OF COMPRESSOR

Section 1 ILLUSTRATIONS AND PARTS LIST

1.16 CANOPY ENCLOSURE AND PARTS (12 AND 16 SERIES)



Section 1 ILLUSTRATIONS AND PARTS LIST

1.16 CANOPY ENCLOSURE AND PARTS (12 AND 16 SERIES) (continued)

<i>key number</i>	<i>description</i>	<i>part number</i>	<i>quantity</i>
32	nut, hex flange $\frac{5}{16}$ "	825305-283	4
33	screw, hex serrated washer $\frac{5}{16}$ " x $\frac{3}{4}$ "	829705-075	4
34	washer, plain $\frac{5}{16}$ "	838205-071	4
35	motor, 25HP (230, 460V)	250000-031	1
36	screw, hex serrated washer $\frac{5}{16}$ " x $\frac{3}{4}$ "	829705-075	4
37	grip, cord $\frac{1}{2}$ "	250021-321	1
38	panel, access side special (air-cooled)	250021-260	1
	• panel, access side special (water-cooled)	250034-296	1
39	angle, seal (40 and 50 HP)	250034-939	1
	• angle, seal (60 and 75 HP)	250034-881	1
40	panel, access side (air-cooled)	250017-310	1
	• panel, access side (water-cooled)	250034-297	1
41	panel, enclosure end (water-cooled)	250018-647	2

PLEASE NOTE: WHEN ORDERING PARTS, INDICATE SERIAL NUMBER OF COMPRESSOR

Section 1 ILLUSTRATIONS AND PARTS LIST

1.17 DECAL GROUP

1 **GENUINE SULLAIR SERVICE PARTS**
 MODEL: 1285-40, 50 & 60HP
 DESCRIPTION:
 * ELEMENT AIR FILTER STD. P/N 040893
 ELEMENT FLUID FILTER (FG) 250025-526
 ELEMENT PRIM. SEPARATOR 250024-118
 ELEMENT SEC. SEPARATOR 400187-011
 KIT FLUID RETURN LINE 241172
 KIT SULLUCON CONTROL 250026-353
 SPRING SULLUCON CONTROL 250006-526
 ** STD. COMPRESSOR FLUID OPTIONS:
 SRF 1/4000 FLUID (5 GAL.) 250019-862
 SULLUBE 32 FLUID (5 GAL.) 250025-869
 24KT FLUID (5 GAL.) 040850-901
 ** SEE COMPR. FILL DECAL FOR CORRECT FLUID
 * HEAVY DUTY FILTER OPTION
 ELEMENT PRIM. AIR FILTER 042301
 ELEMENT SEC. AIR FILTER 048302
 THE ABOVE PARTS MAY ALSO BE ORDERED AS AN ANNUAL MAINTENANCE KIT:
 1285 W/STD. AIR FILTER 250027-932
 1285 W/H.D. AIR FILTER 250027-933
 THE ABOVE PARTS SHOULD BE ORDERED FROM A LOCAL SULLAIR DISTRIBUTOR FOR INFORMATION REGARDING THE LOCATION OF YOUR NEAREST SULLAIR DISTRIBUTOR CONTACT:
 SULLAIR CORPORATION TEL. (313) 874-1800
 PARTS DIVISION 800 348-2722
 1825 E. SECOND ST. MICHIGAN CITY, IN. 46360
 250054-187

2 **GENUINE SULLAIR SERVICE PARTS**
 MODEL: 1085-60, 75 & 100 HP
 DESCRIPTION:
 * ELEMENT AIR FILTER STD. P/N 040893
 ELEMENT FLUID FILTER (FG) 250025-526
 ELEMENT PRIM. SEPARATOR 250024-118
 ELEMENT SEC. SEPARATOR 400187-011
 KIT FLUID RETURN LINE 241172
 KIT SULLUCON CONTROL 250026-353
 SPRING SULLUCON CONTROL 250006-526
 ** STD. COMPRESSOR FLUID OPTIONS:
 SRF 1/4000 FLUID (5 GAL.) 250019-862
 SULLUBE 32 FLUID (5 GAL.) 250025-869
 24KT FLUID (5 GAL.) 040850-901
 ** SEE COMPR. FILL DECAL FOR CORRECT FLUID
 * HEAVY DUTY FILTER OPTION
 ELEMENT PRIM. AIR FILTER 042543
 ELEMENT SEC. AIR FILTER 047543
 THE ABOVE PARTS MAY ALSO BE ORDERED AS AN ANNUAL MAINTENANCE KIT:
 1085 W/STD. AIR FILTER 250027-932
 1085 W/H.D. AIR FILTER 250027-934
 THE ABOVE PARTS SHOULD BE ORDERED FROM A LOCAL SULLAIR DISTRIBUTOR FOR INFORMATION REGARDING THE LOCATION OF YOUR NEAREST SULLAIR DISTRIBUTOR CONTACT:
 SULLAIR CORPORATION TEL. (313) 874-1800
 PARTS DIVISION 800 348-2722
 1825 E. SECOND ST. MICHIGAN CITY, IN. 46360
 250054-136

3 **WARNING**
 Disconnect all power at source, before attempting maintenance or adjustments.

4 **WARNING**
 Do not operate without tangard in place

5 **DANGER**
 Lethal shock hazard inside. Disconnect all power at source, before opening or servicing.

6 THIS UNIT WIRED FOR 460 VOLT

7 **NOI T I O N**
ROTATION

8 **GROUND**

9 **WARNING**
 Use equipment grounding connector in accordance with the National Electrical Code, and all Federal, State, and Local Codes, to help avoid possible ground fault shock hazard.

10 **WATER DRAIN**

11 **WARNING**
 DO NOT PERMIT AIR FROM THIS EQUIPMENT TO CONTACT FOODSTUFF, EXCEPT IN FULL COMPLIANCE WITH FDA STANDARD 21CFR 178.3570 AND ALL OTHER APPLICABLE FEDERAL, STATE AND LOCAL CODES, STANDARDS AND REGULATIONS

12 **DANGER**
 Death or serious injury can occur from inhaling compressed air without using proper safety equipment. See OSHA standards on safety equipment.

13 **WARNING**
 Do not remove caps, plugs, or other components when compressor is running or pressurized. Stop compressor and relieve all internal pressure before doing so

14 **GENUINE SULLAIR SERVICE PARTS**
 MODEL: 1285-40, 50 & 60HP
 DESCRIPTION:
 * ELEMENT AIR FILTER STD. P/N 040893
 ELEMENT FLUID FILTER (FG) 250025-526
 ELEMENT PRIM. SEPARATOR 250024-118
 ELEMENT SEC. SEPARATOR 400187-011
 KIT FLUID RETURN LINE 241172
 KIT SULLUCON CONTROL 250026-353
 SPRING SULLUCON CONTROL 250006-526
 ** STD. COMPRESSOR FLUID OPTIONS:
 SRF 1/4000 FLUID (5 GAL.) 250019-862
 SULLUBE 32 FLUID (5 GAL.) 250025-869
 24KT FLUID (5 GAL.) 040850-901
 ** SEE COMPR. FILL DECAL FOR CORRECT FLUID
 * HEAVY DUTY FILTER OPTION
 ELEMENT PRIM. AIR FILTER 042543
 ELEMENT SEC. AIR FILTER 047543
 THE ABOVE PARTS MAY ALSO BE ORDERED AS AN ANNUAL MAINTENANCE KIT:
 1285 W/STD. AIR FILTER 250027-932
 1285 W/H.D. AIR FILTER 250027-934
 THE ABOVE PARTS SHOULD BE ORDERED FROM A LOCAL SULLAIR DISTRIBUTOR FOR INFORMATION REGARDING THE LOCATION OF YOUR NEAREST SULLAIR DISTRIBUTOR CONTACT:
 SULLAIR CORPORATION TEL. (313) 874-1800
 PARTS DIVISION 800 348-2722
 1825 E. SECOND ST. MICHIGAN CITY, IN. 46360
 250054-136

15 **SULLAIR COMPRESSOR FLUID SULLUBE-32**
 P/N-250009-396
 MIXING OF OTHER FLUIDS WILL VOID WARRANTY
 FILL CAP HAS AN O-RING SEAL
 DO NOT USE PIPE DOPE.

16 **SULLAIR COMPRESSOR FLUID SRF 1/4000**
 -P/N-250019-861-
 MIXING OF OTHER FLUIDS WILL VOID WARRANTY
 FILL CAP HAS AN O-RING SEAL
 DO NOT USE PIPE DOPE.

17 **DANGER HIGH VOLTAGE**

18 **WATER IN**

19 **WATER OUT**

20 **SULLAIR**
 OIL STOP VALVE P/N 16741

21 **IN WATER OUT**

22 **ROTATION**

23 **SRF 1/4000**
 THIS COMPRESSOR CONTAINS SRF 1/4000 COMPRESSOR FLUID. YOU MUST CHANGE FLUID EVERY 12 MONTHS OR 4000 HOURS.

24 **COMPRESSOR LUBRICANT SULLAIR 24KT FLUID ONLY**
 DO NOT OPEN FILLER CAP WHILE MACHINE IS OPERATING OR PRESSURIZED. PIPE DOPE IS NOT REQUIRED ON CAP.

25 **SULLAIR CORPORATION TWO Airanteed YEARS SCREW COMPRESSORS**

Section 1

ILLUSTRATIONS AND PARTS LIST

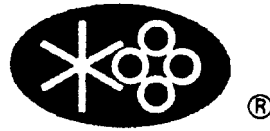
1.17 DECAL GROUP

<i>key number</i>	<i>description</i>	<i>part number</i>	<i>quantity</i>
1	decal, fork lifting	241814	4
2	decal, 12BS maintenance kit (40,50,60HP)	250034-137	1
3	sign, warning sever fan	049855	2
4	sign, warning sever fan port	049965	1
5	sign, danger electrocution	049850	1
6	decal, rotation	250021-286	1
7	decal, 460 volt	040631	1
8	decal, ground lug	045433	1
9	decal, warning ground fault	049852	1
10	decal, water drain	040345	1
11	sign, warning "food grade" lube	250003-144	1
12	sign, danger air breathing	250027-935	1
13	sign, warning compressor fluid fill cap	049685	1
14	decal, 16BS maintenance kit (60,75,100HP)	250034-138	1
15	decal, compressor fluid Sullube 32	250023-361	1
16	decal, SRF 1/4000 fluid	250022-839	1
17	decal, danger high voltage	042218	1
18	decal, "water in"	250019-107	1
19	decal, "water out"	250019-108	1
20	decal, oil stop valve P/N 016741	410238	1
21	decal, water inlet/outlet	049873	1
22	decal, rotation	250021-564	1
23	decal, SRF 1/4000 logo	250021-483	1
24	decal, compressor lubricant	046540	1
25	decal, airanteed 2 years - white	043067	1
26	decal, logo - white (not shown)	040087A	2
27	decal, Sullair - white (not shown)	250014-057	2
28	decal, 12-40 (not shown)	250019-110	1
29	decal, 12-50 (not shown)	250019-111	1
30	decal, 12-60 (not shown)	250019-112	1
31	decal, 16-60 (not shown)	250019-114	1
32	decal, 16-75 (not shown)	250019-115	1

PLEASE NOTE: WHEN ORDERING PARTS, INDICATE SERIAL NUMBER OF COMPRESSOR

NOTES

WORLDWIDE SALES AND SERVICE



SULLAIR CORPORATION

A SUBSIDIARY OF SUNDSTRAND CORPORATION

3700 E. Michigan Blvd. Michigan City, Indiana 46360-9990
Telephone (219) 879-5451 Telex 4946922

Printed in U.S.A. SP

**Specifications Subject To
Change Without Prior Notice**